

UV Glazing Film: To be applied internally to the DT window.

4no 150mmH Stainless Steel Upstands: Required to either side of both ICC station ice wells.

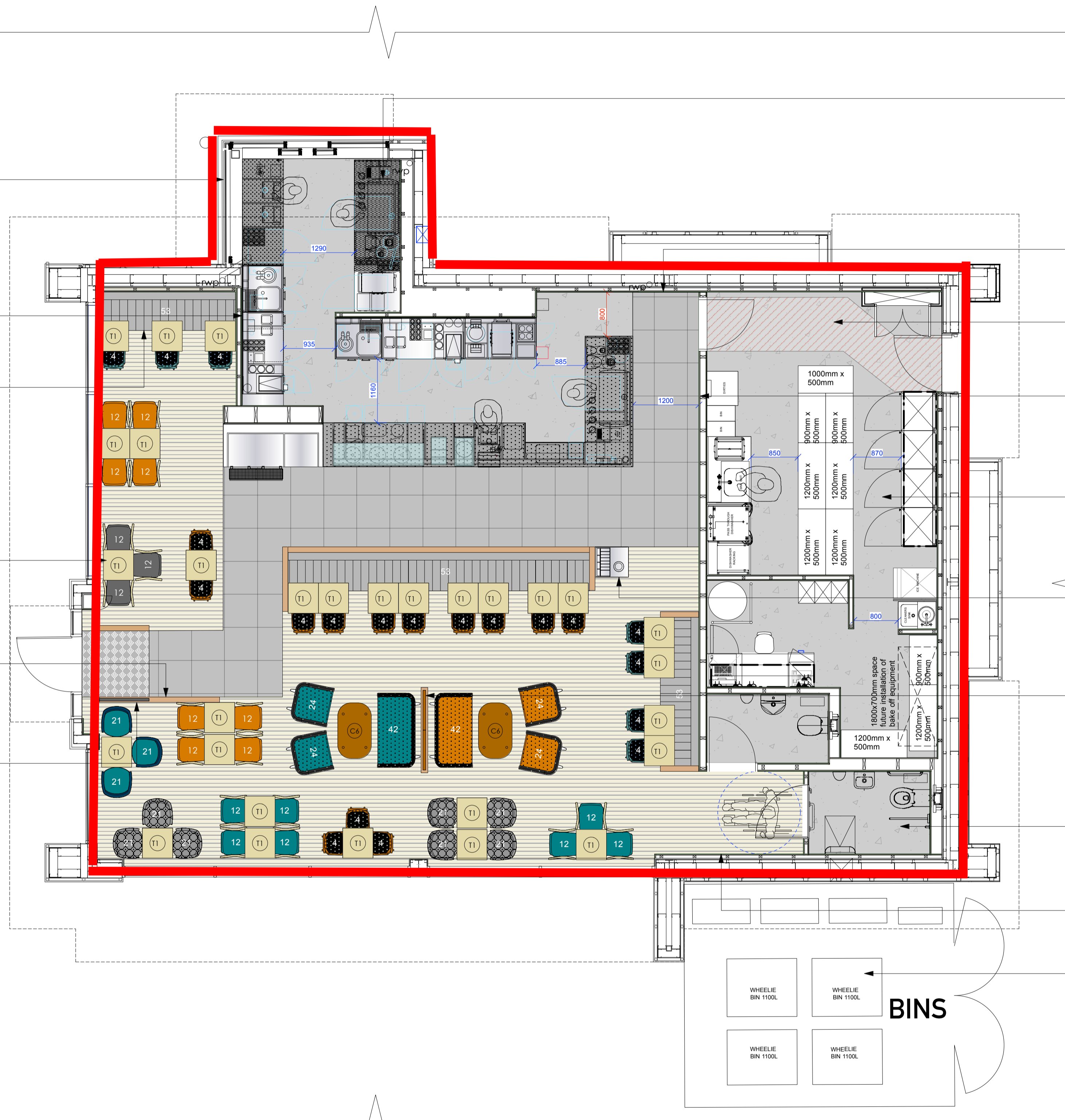
Banquette: Refer to Atlas Design Manual Section 3.3\_Furniture\_150511 and drawing no. 3681\_503 for further details. NB: for perimeter banquette use standard Metro Banquette drawing for upper LED lighting, wall washing detail only Midfloor banquette to be installed with low wall to rear, to measure 950mm high

Furniture/ Equipment Schedule: refer to 17.1014.011

Balustrades: refer to Atlas Design Manual Section 3.1\_Wall Finishes\_150511 page no. 3.1.14 and drawing no. 3681\_ESC\_506. 1no. 1200mmW x 950mmH

Timber & Plain Glass Screen: To be supplied by MC. Frame to be finished to match wall panelling 1no. 920mm wide x 1500mm high panels, with longer posts to give an o/a height of 1610mm refer to Atlas Design Manual Section 5\_Support document\_150512 page 5.4.9 for further details. To sit above 920mm wide x 1050mm high low wall, finished to match WP1\_SPL

(EXTERNAL FURNITURE LAYOUT TO BE CONFIRMED BY COSTA)



1+1 Janus Counter & Drive Thru window: All commando sockets to counter area to be fully accessible. No holes to be left in counters & fixed seating, to prevent pest infestation.

A1 Poster Frame: To be applied to wall as indicated

Demarcation lines: to back of house. Fire safety route to be kept clear at all times

Timber Wall Linings: Comprising more than 60 sqm to be treated to achieve Class 0 fire rating.

Back of House: Refer to 17.1014.011 for equipment schedule

Condiment Unit: Refer to Atlas Design Manual drawing no. 3681\_505 to be finished to match WP1\_SPL

Timber & Plain Glass Screen: To be supplied by MC. Timber frame to be finished to match timber wall panelling, refer to drawing no's: 17.1014.010.1 & 17.1014.010.2 for further details

Unisex & DDA WCs: Refer to Atlas Design Manual Section 3.9\_Toilets\_150508 page no. 3.9.2 & 3.9.4 for further details

Wall Finishes: Refer to 17.1014.009

Refuse store: by Developer. Key clamp protection to condensers and padlock to store by shopfitting contractor

AREA:	SQFT:	SQM:
Retail area incl. Wc's	1448	134
Back of House	352	33
<b>Total</b>	<b>1800</b>	<b>167</b>

COVERS:	
External	24 TBC BY ARCHITECT/COSTA
Internal	71
<b>Total</b>	<b>95</b>

SCALE: 1:50@A1 / 1:100@A3



DRAWN BY: CHECKED BY: DRAWN DATE: REVISION DATE:

HS TR 25.10.2017

DRAWING TITLE:

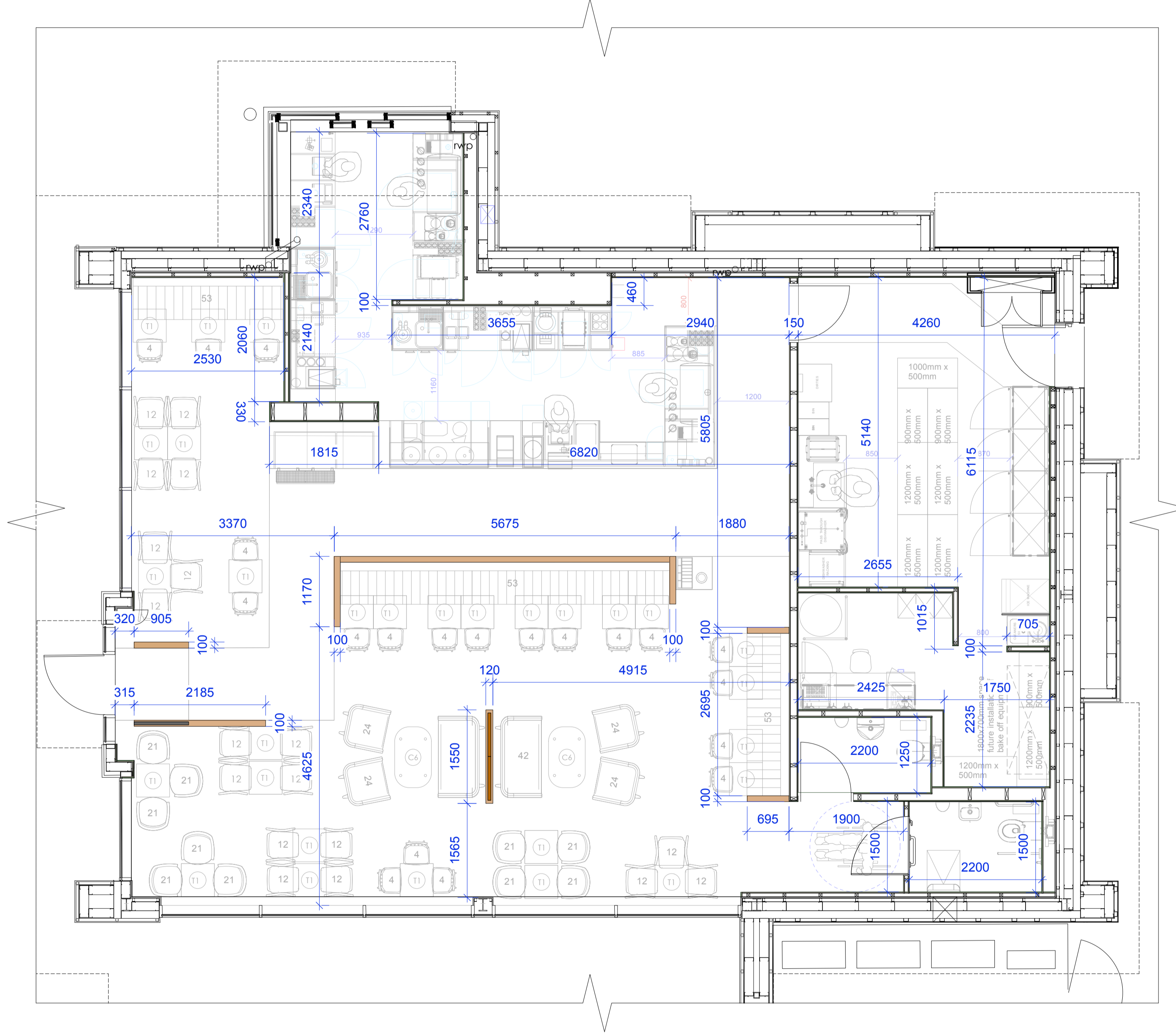
AS BUILT GA PLAN

DRAWING NO:

17.1014.003

REV: DESCRIPTION: BY: DATE:

STORE ADDRESS: PLOT 1, WESTGATE, HEAD OF THE VALLEY ROAD, LLANFOIST, ABERGAVENTNY, MONMOUTHSHIRE, NP7 9LL



REV:	DESCRIPTION:	BY:	DATE:
STORE ADDRESS:		PLOT 1. WESTGATE, HEAD OF THE VALLEY ROAD, LLANFOIST, ABERGAVENNY, MONMOUTHSHIRE, NP7 9LL	



### LIGHTING NOTES:

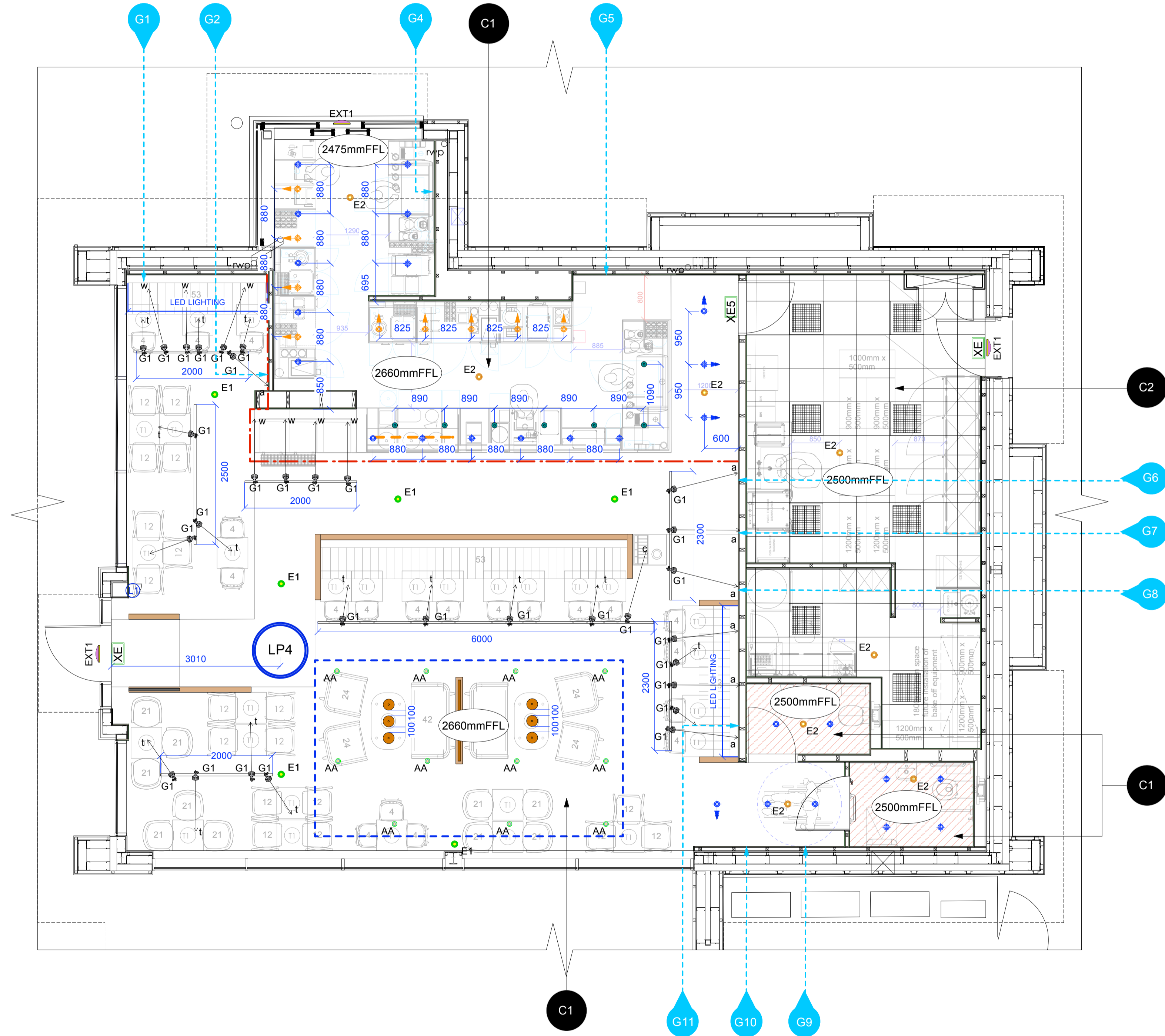
- Ceiling feature lighting:
  - 7no. LP10A Sage pendant lights. RAL 6034, 320mm high, suspended at 1900MM AFFL ●
  - 2no. sets x 3no LP11 Poppy C RAL 2001 pendant lights. Suspended at 1800MM AFFL. Supplied by Northern Lights ●●
  - 1no. LP4 Crystal Ring 1000mm diam.with black outer finish & copper interior. suspended at 2660MM AFFL ○
- Trunking: All trunking, cable trays & service feeds to be fixed as high as practicable within the unit above light line
- Light switches/last man out switch/intruder alarm keypad to be housed within cavity & accessed 300mmW x 250mmH hinged door ○
- Atlas spec: D1, specular adjustable downlight - 22no. required supplied by DAL ○
- Atlas spec: W2, specular adjustable downlight - 9no. required supplied by DAL ○
- Atlas spec: W1, specular adjustable downlight - 4no. required supplied by DAL ○
- Atlas spec: G1, Fort Knox 1\PTTrack - 3-phase track\pmounted adjustable spotlight.\P1 x LED Array 15W, 1235lm.\P3000K, LED, 48° beam.\PBlack finish.\P09.2162.14 G1
- 31no. required supplied by ELG
- Atlas spec: AA, Light Soldier\PAadjustable Ø90\Precessed circular adjustable\pdownlight.\P1 x LED Array 10.5W, 900lm.\P3000K, LED, 48° beam.\PWhite finish.\PNon-dimmable.\P03.4322.30 AA
- 11no. required supplied by ELG
- Atlas spec: E1, XYLUX LD3/A/B\3hr non-maintained surface\pmounted LED emergency\Pluminaire.\PComplete with batteries\PIntegral in housing.\PBlack finish. E1
- 6no. required supplied by ELG
- Atlas spec: E2, XYLUX LR\Precessed, non maintained.\P3hr, 3W LED emergency\Pluminaire.\PWhite finish. E2
- 8no. required supplied by ELG
- Atlas spec: XE, Exit Sign\pWall mounted illuminated exit\pSign with 1x8W fluorescent\pLamp.\PBlack finish. XE
- 2no. required supplied by ELG
- Atlas spec: XE5, Exit Sign\pPendant mounted illuminated\pExit sign with 1x8W\pfluorescent lamp.\PBlack finish.\PSuspension height to be\pconfirmed by architect. - 1no. required supplied by ELG XE5
- Atlas spec: EXT1, Stealth Linear.\pSurface mounted exterior \Pluminaire.\P24\36W compact fluorescent\pLamp.\PIP65.\P GREY finish. - 3no. required supplied by ELG EXT1
- All track & light fittings to main area to be finished Black & supplied by ELG to current Atlas specifications
- 2no. LED lighting to rear of perimeter banquettes ref. Miniflux HP gen2 16W/m L=104cm 3000K warm white, 1no. approx. 2490mm & 1no. approx 2700 exact length TBC on site LED LIGHTING
- To be supplied by ELG
- Atlas spec: Ambient Cake Display Lighting to current Atlas spec. - 1no. required supplied by Viabizzuno -
- 8no. 600mm x 600mm vapour proof fluorescent light. Supplied by Main Contractor -

### CEILING NOTES:

- Ceiling finish above light line finished to match RAL 7022 Umbra Grey throughout
- MF ceiling to WC's, ceiling raft & counter bulkheads & u/side to be finished Ref: T Colour 2 - Dulux 20YY 531/24 Light Sand ●
- White suspended ceiling 600mm x 600mm lay-in grid in BOH area at 2500mmH ●

### ARTWORK NOTES:

- Drawing to be read in conjunction with drawing no's: 17.1014.010.1 & 17.1014.010.2. Refer to internal elevations for artwork references & dimensions.



SCALE: 1:50@A1 / 1:100@A3

DRAWN BY:	CHECKED BY:	DRAWN DATE:	REVISION DATE:	DRAWING TITLE:	DRAWING NO:
HS	TR	25.10.2017		AS BUILT LIGHTING, CEILING & ARTWORK PLAN	17.1014.008

REV:	DESCRIPTION:	BY:	DATE:
STORE ADDRESS:		PLOT 1, WESTGATE, HEAD OF THE VALLEY ROAD, LLANFOIST, ABERGAVENTNY, MONMOUTHSHIRE, NP7 9LL	



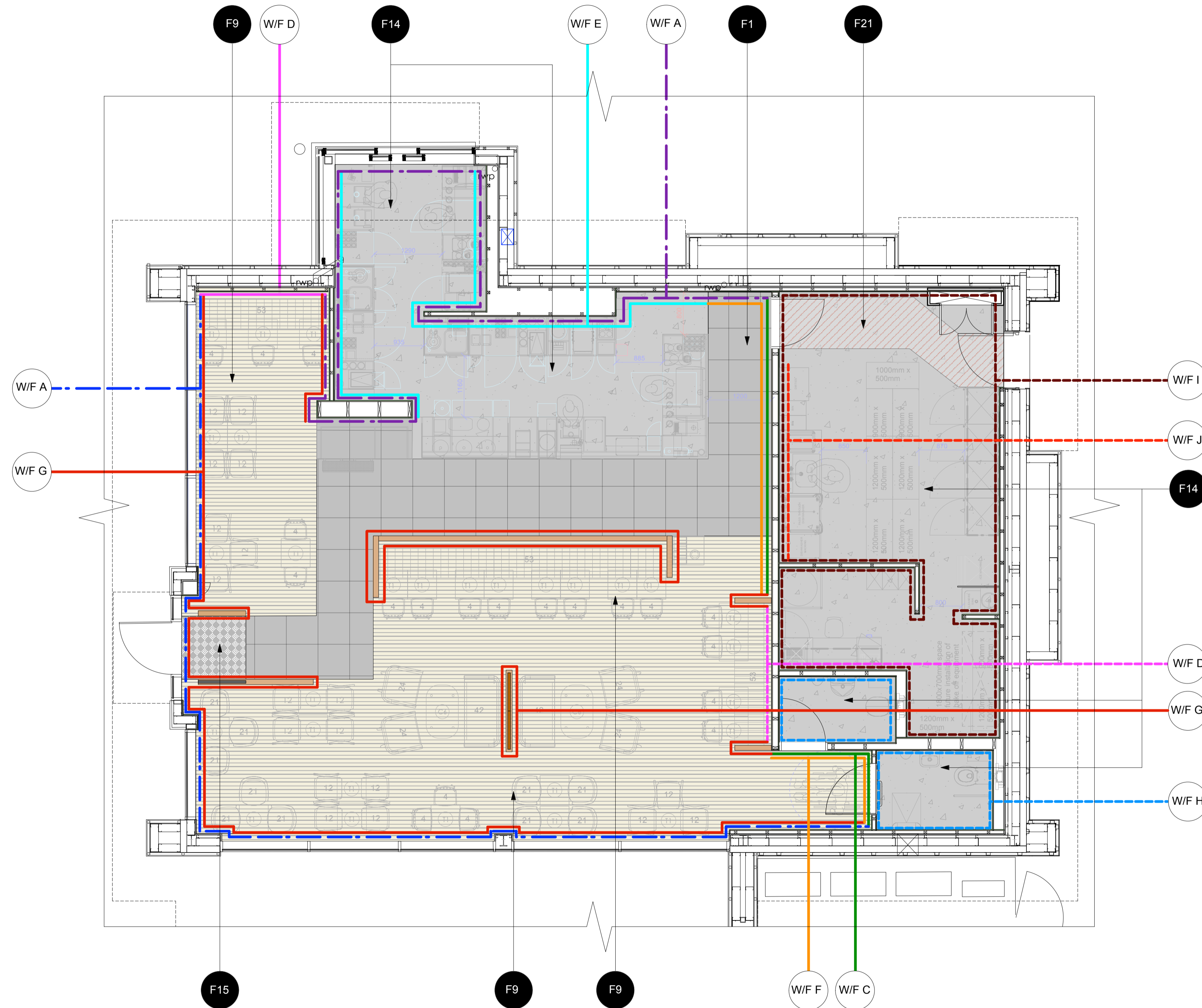
### FLOOR FINISHES LEGEND:

<b>F1</b>	- Atlas spec F2 Johnsons Tiles Mode Range - ref. "Mink" ref. MOD06N.
<b>F9</b>	- Atlas spec F9 Moduleo Flooring ref: Transform 244546 Country Oak
<b>F14</b>	- Atlas spec F14 Safety Flooring - ref. "Polysafe Standard" ref: Black Walnut 4150
<b>F15</b>	- Atlas spec F15 ref: ZigaZaga 80 Raw Umber
<b>F21</b>	- Safety Flooring - ref. "Polysafe Standard" ref: Redwood 4040

**NOTES:**  
-All square meterage areas given are to be checked on site.  
-10% wastage to be allowed for.  
-Allow for neatly cutting floor finishes at all gullies, waste pipes, manhole frames etc as required.

### WALL FINISH REFERENCES:

<b>W/F A</b>	Decorate Ref T Colour 4 - Dark Warm Grey, Dulux 10YY 270 60 above 950mm AFFL and below 3845mm AFFL
<b>W/F B</b>	Decorate Ref T Colour 3 - Dark Sand Dulux 10YY 38 135 above 950mm AFFL and below 3845mm AFFL
<b>W/F C</b>	Decorate Ref T Colour 2 - Light Sand, Dulux 20YY 531 24 above 950mm AFFL and below 3845mm AFFL
<b>W/F D</b>	Refer to internal elevations for wall finish above AFFL 950mm AFFL
<b>W/F E</b>	Johnson Tiles Bevel Brick Ceramic tiles ref: BVBL 200mm x 100mm x 17.5mm laid brickbond. Mapei black grout only
<b>W/F F</b>	Wall Panelling Ref: WP1-TL tiled dado panelling with capping. Colour: Leaf SAV08A & SAV08D, refer to drawing no. 3861_HH_501 Tiled Paneling for details
<b>W/F G</b>	Dado: Ref WP1-SPM 950mm shuttering plywood dado panelling with irregular v-groove, medium stain finish. Stain Morrells wood Jacobean 0182/400, mix 50% stain & 50% thinner. Refer to Atlas Guide for further details
<b>W/F H</b>	WCs Refer to Atlas Manual ref: 3.9.2 Toilets - Typical Disabled Layout Tiling Option 1 & 3.9.4 Toilets - Typical Unisex Layout Tiling Option 1. Wall finish Atlas spec: BVBL & BVWH Johnson Bevel Brick Ceramic Tile with Mapei Black grout
<b>W/F I</b>	BOH Gloss white paint finish
<b>W/F J</b>	BOH Full height tiled wall in 150x150mm White Gloss ceramic tiles Note: vertical beading strips applied to all leading edges

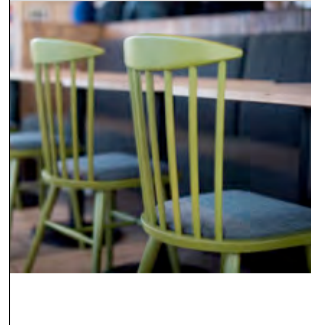
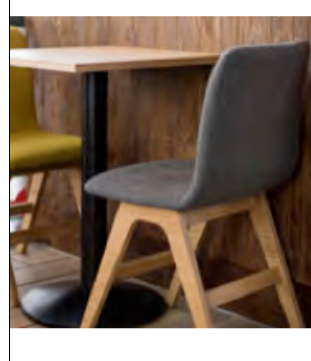

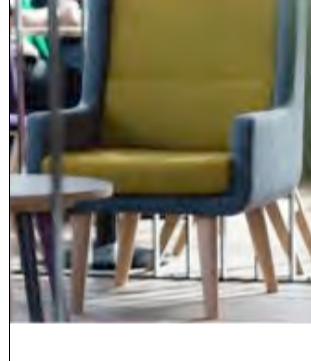
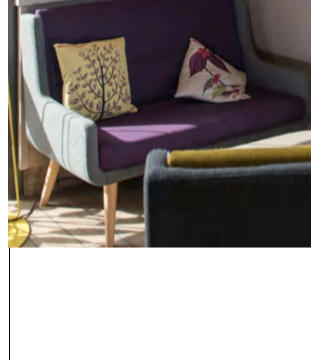





NOTES:  
DRAWING SUBJECT TO FULL SITE SURVEY.  
ALL MEASUREMENTS TO BE CONFIRMED.  
PROPOSALS & ALL NOTED DIMENSIONS SUBJECT TO IWP & MAIN CONTRACTOR INPUT.  
ANY DISCREPANCIES TO BE REPORTED TO DESIGNER.  
DRAWING TO BE READ IN CONJUNCTION WITH ATLAS GUIDELINES.

## TANGERINE PALETTE



### INTERNAL FURNITURE LEGEND:

	Atlas code : 4 Spindle Chair Colour: Orange frame & Tonica - 182/UTG Upholstered Seat Pad QTY: 13no. Colour: Duck Egg Blue frame & Tonica - 182/UTG Upholstered Seat Pad QTY: 7no.	TOTAL 4 QTY: 20no.
	Atlas code: 12 Malto Dining Chair (fully upholstered) UTO Kvadrat Tonica - 531 QTY: 8no. UTT Kvadrat Tonica - 831 QTY: 7no. UTG Kvadrat Tonica - 182 QTY: 3no.	TOTAL 12 QTY: 18no.
	Atlas code: 21 Eero Arm Chair UTT Kvadrat Tonica - 831/UCTL Crest Leather Hemmingway - Dark Teal QTY: 3no. UET - Sunbury Eno Chicory: 8107 QTY: 7no.	TOTAL 21 QTY: 10no.
	Atlas code: 24 Chai arm chair UTG - Kvadrat Tonica: 182/UTO Kvadrat Tonica - 531 QTY: 2no. UTG - Kvadrat Tonica: 182/UTT Kvadrat Tonica - 831 QTY: 2no.	TOTAL 24 QTY: 4no.
	Atlas code: 42 Chai sofa UTG - Kvadrat Tonica: 182/UTO Kvadrat Tonica - 531 QTY: 1no. UTG - Kvadrat Tonica: 182/UTT Kvadrat Tonica - 831 QTY: 1no.	TOTAL 42 Sofa QTY: 2no.
	Fixed seating & banquettes: Exact length to be confirmed on site QTY: 1no. approx. 2550mmL QTY: 1no. approx. 5500mmL QTY: 1no. approx. 2700mmL	TOTAL 53 QTY: 3no.

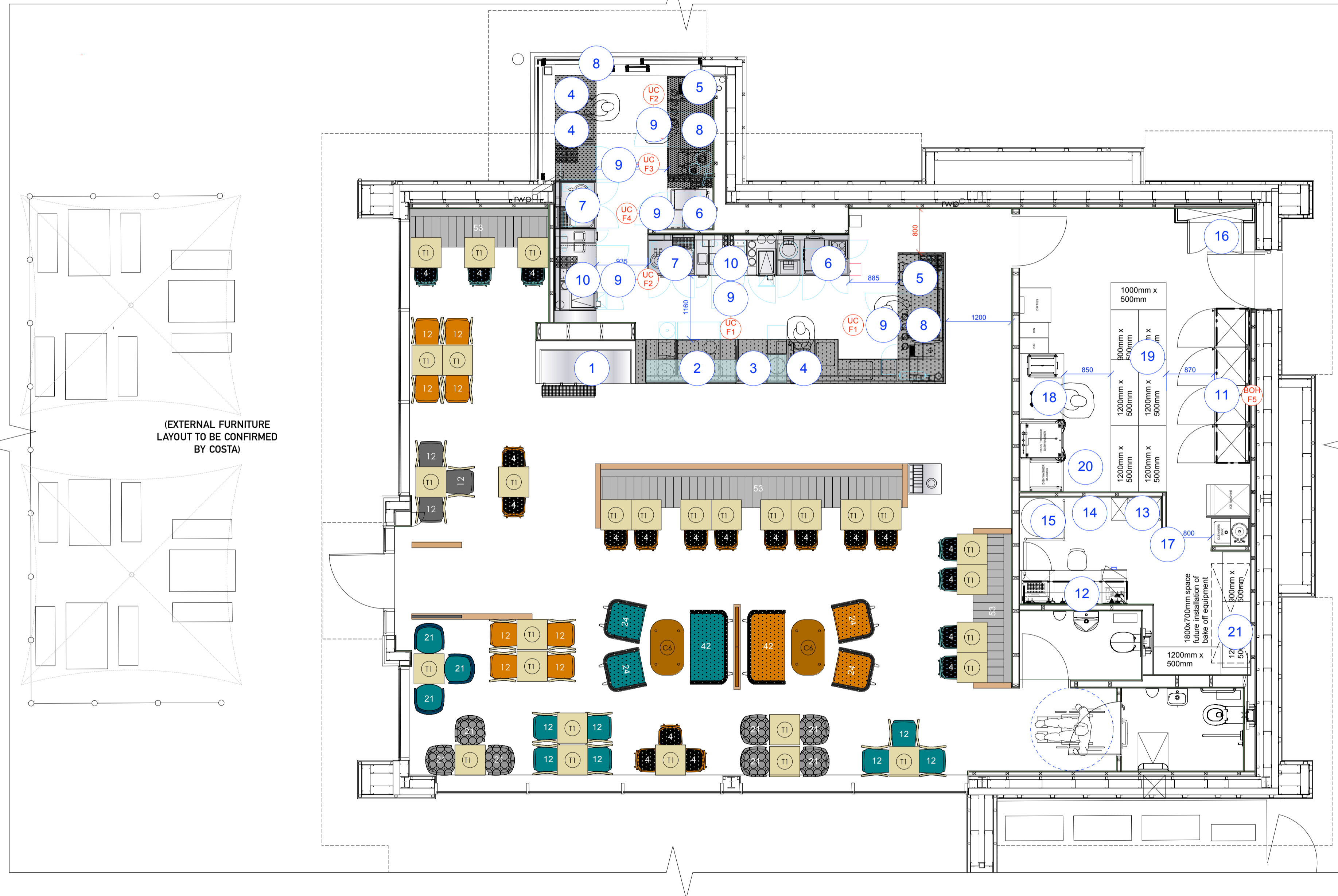
### INTERNAL TABLE REF:

	Atlas code: T1 550mm sq table	TOTAL T1 QTY: 29no.
	Atlas code: C6 610mmx1010mm	TOTAL C6 QTY: 2no.

### EXTERNAL FURNITURE LEGEND:

	Mill Fixed Table	6
	Mill Bench	12

Notes:  
\*External furniture quantities TBC by architect/Costa.



### COUNTER EQUIPMENT SCHEDULE:

1	- 1no. multi-deck unit with integrated crisp display, 1 no. 1000MM wide fridge & 1 no. 600MM wide fridge
2	- 1460mmW JANUS ambient unit & standard kit by main contractor
3	- 1no. POM unit to Atlas standard
4	- 1no. Till Stations to front counter, 2no. Till Station to Drive Thru window
5	- 2no 3 group coffee machines, 2no. grinders, 2no. mini grinders & 2no. water boilers
6	- 4no. counter top blenders (2no. to standard counter & 2no. to Drive Thru window)
7	- 1no. utensil sink & 1no. wash hand basin to main counter & 1no. utensil sink & 1no. wash hand basin to Drive Thru window area, all utensil sinks to receive coffee catchers
8	- 1no. tea storage unit to front counter.
9	- Fridge quantities: UC F1 - 2no. Left hand under counter fridges - PNC: 727539 UC F2 - 2no. Right hand under counter fridge - PNC: 727546 UC F3 - 1no. Left hand under counter glass fridge - PNC: 727031 UC F4 - 1no. Right hand under counter glass fridge.
10	2no. Merry Chef Oven, 1no. to Drive Thru window and 1no. to standard counter area

### BOH EQUIPMENT SCHEDULE:

11	- Fridge quantities: BOH F5 - 4no. Left hand BOH fridges - 400ltr 730186
12	- Managers desk (approx length-1900mm exact length TBC on site) set up as per current Atlas standards & 1no. safe ref. Retailer 3000 compact audit safe from Insafe
13	- 3no. lockers Atlas Standards
14	- 1no. A1 notice board
15	- Water heater to current Atlas standards
16	- Electrical cupboard: 1 Hr Fire rated cupboard and door with thumb lock and statutory warning signs
17	- 2no. rows of coat hooks
18	- Standard BOH equipment to current Atlas Design Manual: - Dirties - Sink Unit with push through dishwasher - Dishwasher racking - Ice machine - Cleaners sink (MOP sink)
19	- Racking: 5no. 1200mm x 500mm, 1no. 1000mm x 500mm, 3no. 900mm x 500mm, to current Atlas Standards
20	- High level spur shelving applied at high level 500mmD indicated by dotted line
21	- Bake-off equipment/space (allow 1800mmW for equipment)