



Childcare Sufficiency Assessment 2022 - 2027

Name of Local Authority: Monmouthshire County Council

Name of Responsible Officer: Sue Hall, Early Years Manager

Date of Completion: 8th February 2022

Contents

Introduction	5
Principal Statement	5
Conducting the Assessment – Childcare Sufficiency Assessment	5
Context	6
Partnership Working and Consultation.....	7
Cwlwm Partners.....	7
Schools.....	8
Job Centre Plus	9
Local Employers.....	10
Local Safeguarding Board	10
Family Information Service.....	11
Focus Groups with Children.....	11
Welsh Education Strategic Plan (WESP)	12
Local Well-Being Assessment	13
Population.....	14
Population Data	14
Vulnerable Children	15
Households	16
Welsh Language Profile	17
Overview – Childcare Types, Services and Places.....	18
Number of Childcare Providers & Type of Services.....	18
Geographical Distribution of Childcare Providers & Services Provided	19

Childcare Places – Supply and Demand per Childcare Type	21
Registered Provision – Term Time	21
Unregistered Provision – Term Time	21
Registered Provision – School Holidays	21
Unregistered Provision – School Holidays	22
Geographical Distribution of Childcare Places per Childcare Type – Supply	22
Summary of All Childcare Types	24
Childminders	24
Full Day Nursery	27
Sessional Day Care	30
Out of School Care	33
Play and Care Provision	35
Nannies	36
Foundation Phase Nursery Provision (FPN)	37
The Childcare Offer	39
Flying Start Provision	41
Free Breakfast Club Provision	42
Understanding the Needs of Parents/ Carers	43
Number of Responses to the Parental Survey	43
Analysis of Current Use and Future Demand for Childcare Provision	43
Cross Border Provision	47
Workforce Development	49
Covid-19 and Sustainability	50
Gap Analysis & Areas for Improvement	51

Childcare Sufficiency Assessment – Action Plan	57
Annex 1 – Childminder Supply Data	62
Annex 2 – Full Day Care Supply Data	69
Annex 3 – Sessional Care Supply Data	76
Annex 4 – Out of School Care Supply Data	82
Annex 5 – Play & Care Provision Supply Data	88
Annex 6 – Parental Survey Results	91
Annex 7 – Foundation Phase Nursery Provision	106
Annex 8 – Childcare Offer Provision	108
Annex 9 – Flying Start Provision	110
Annex 10 – Workforce Development	112
Annex 11 – Covid-19 Impact on Childcare	114

Introduction

Principal Statement

Every Local Authority in Wales has a statutory duty under The Childcare Act 2006 to ensure, so far as is reasonably practicable, that the provision of childcare is sufficient to meet the requirements of parents in their area who require childcare in order to enable them—

(a) to take up, or remain in, work, or

(b) to undertake education or training which could reasonably be expected to assist them to obtain work.

The Local Authority also has a statutory duty to undertake Childcare Sufficiency Assessments at least every five years and to provide information, advice and assistance relating to the provision of childcare or any other services or facilities, which may be of benefit to parents, prospective parents, children or young people.

Conducting the Assessment – Childcare Sufficiency Assessment

The Childcare Sufficiency Assessment will provide details of the supply of childcare within the Local Authority, along with the demand for this provision. This should enable the Local Authority to establish if there is sufficient childcare to meet the needs of families in the area and to identify any potential gaps in the childcare market or barriers that are preventing families from accessing childcare.

Once these gaps and barriers have been identified, an action plan will be developed detailing how the Local Authority aims to address these areas and to support the childcare market.

The Childcare Sufficiency Assessment must demonstrate that the Local Authority has taken into account and assessed the matters set out in The Childcare Act 2006 (Local Authority Assessment) (Wales) Regulations 2016 and the Statutory Guidance.

Context

Monmouthshire Family Information Service holds details of all childcare provision throughout Monmouthshire, both registered and unregistered. 94% of registered childcare providers completed their CIW SASS return in 2021. Additional information was collected from unregistered childcare providers and those that were unable to complete their SASS return. This information, combined with data already held by the Local Authority, was used to inform the childcare supply sections of this Childcare Sufficiency Assessment (CSA).

An online survey conducted by Welsh Government was used to consult with parents in order to gather their views on childcare, to analyse how it is used currently, to identify possible barriers to using childcare and to assess future demand for childcare.

Relevant stakeholders and other Local Authority departments have also been consulted with and their views have been incorporated within this document.

An action plan has been produced and this will form the basis of our Early Years' Service Improvement Plan for the next five years. Progress made against these targets will be monitored and reported internally on a quarterly basis. An annual CSA Progress Report will be submitted to Welsh Government and the action plan will be reviewed each year and revised, as necessary. Funding available through the RSG and external grant funding will be allocated to address the priorities in the CSA action plan.

Prior to submission, the Childcare Sufficiency Assessment will be shared with colleagues within the Children & Young People's Directorate and members of the Early Years Development & Childcare Partnership. It will also be shared with County Councillors at a Cabinet meeting on Wednesday 2nd March 2022. Following this, the CSA will be available for public consultation on the Local Authority website from 1st April 2022 for a period of 28 days before being published and submitted to Welsh Government.

Partnership Working and Consultation

A range of methods were used to consult with relevant stakeholders and gather their views of on the demand, supply and quality of childcare provision throughout Monmouthshire; this consultation included questionnaires, telephone conversations, emails, online meetings and focus groups.

Cwlwm Partners

The majority of childcare umbrella organisations are represented on our Early Years Development and Childcare Partnership (EYDCP) and we have good working relationships with them. The Childcare Sufficiency Assessment and progress made against the action plan is discussed at EYDCP meetings. Several of the Cwlwm organisations receive a small amount of funding from Monmouthshire County Council to provide support to their member settings and we work together to agree and monitor targets.

As part of the consultation process, umbrella organisations were asked to complete a questionnaire to express their views on childcare in Monmouthshire. They were also asked their views on how the needs of vulnerable groups are met and any improvements they consider necessary. On the whole, they didn't feel they were best placed to comment on the range or quality of childcare in Monmouthshire, but those that did felt that there was a good range of childcare providers and that the quality was excellent. They expressed a view that childcare providers in Monmouthshire are well supported by Cwlwm development workers and local authority officers. Gaps highlighted by umbrella organisations included a need for more Welsh medium provision, availability of childcare for those working atypical hours and the need for more registered after school clubs. Recruitment and retention of qualified staff was raised as a concern by all umbrella organisations, along with sustainability of settings due to the impact of the Covid-19 pandemic and the increase in running costs. One of the stakeholders was concerned that new settings opening on school sites could risk displacing existing childcare places at day nurseries, this would ultimately lead to day nurseries becoming unsustainable or a larger financial burden on families of younger/unfunded children. Another stakeholder would like to see childcare providers recognised as highly skilled and paid appropriately.

The main response in relation to improvements for low income families was that more flexible and longer childcare hours need to be developed to support shift workers and parents with atypical working patterns. Affordability is a barrier for low income families and some stakeholders felt that supporting the development of registered childcare will also support low income families by ensuring they are able to benefit from financial support schemes where eligible. A third of stakeholders believe that Flying Start provision should be extended to all areas in order for all low income families to benefit from free childcare and support.

Stakeholders felt that provision for children with additional learning needs or a disability is very good in Monmouthshire and financial support is available to enable settings to employ additional staff to integrate these children within the setting. They acknowledged that training in the new ALN systems has been provided and settings are generally aware of the requirements the ALNET (Wales) Act places on them.

In relation to improvements for working families, stakeholders have commented that there needs to be sufficient, quality, registered childcare opportunities available for children of all ages, in the language of choice. A third of stakeholders believe that there should be an extension of the age range at which children can access funded childcare places, as this is a financial pressure for working families. There needs to be sufficient funding and support to prevent unnecessary raising of fees. Childcare should be available in every community including rural areas of Monmouthshire, so that a lack of childcare in the local vicinity does not impact work. Accessibility and cost of care during the school holidays can be a challenge for working parents/carers but unregulated childcare can impact on the short-term viability and long-term sustainability of existing registered settings. Effective communication of the Childcare Offer was also raised as a factor.

All stakeholders believe that parents should be provided with financial support to meet childcare costs for an initial period when starting employment and that the Childcare Offer should be extended to include parents and carers seeking work.

Schools

A questionnaire was sent to all primary schools to ascertain their views on childcare but there was a limited response. All schools that responded have some type of childcare provision on their school site, ranging from school nurseries, playgroups, after school clubs and unregistered childcare prior to the commencement of their free breakfast club.

Nearly all schools that responded thought that it was beneficial to have childcare located on their school sites. The main reason for this is that it is invaluable to parents as it allows them to work longer hours. One school commented that because they only provide part time school nursery provision, they lose out on attendance figures because parents need longer hours than they can offer. Only one school thought that childcare wasn't beneficial to their school and it should be kept completely separate, as it is a private provision and behaviour within the school could decline as a result of lower expectations at the club. All schools apart from one were aware of childcare providers in their local area, these were primarily childminders who pick up and drop off at the school or after school clubs nearby that have wraparound arrangements with the school.

Only half of the schools were aware of the Childcare Offer, but this is possibly due to the fact that the others don't have school nurseries, so it doesn't affect them. One school commented that having the 30 hours available to parents has meant that they have opted for private nurseries rather than attend the school nursery, as they could only offer 12.5 hours weekly.

Only one school was of the opinion that there was sufficient childcare locally to cater for the needs of the families that attend their schools. All other schools feel that childcare is limited locally and state that parents have approached them about childcare. The most popular request has been for after school care, followed by holiday care. Breakfast club also appears to be an issue as demand exceeds capacity in two instances, although one school commented that breakfast club is being used as cheap childcare and they didn't feel this was the intention when it was established. Two schools have responded that they would be interested in setting up after school clubs at their schools and they do have space to do so but there are ongoing issues such as finding and funding qualified staff. Almost all schools stated that parents at their school would want childcare if it became available at their school but several commented that parents would struggle to meet childcare costs if there were no funding streams available. One school didn't think that there were many families that used or needed childcare.

More than half of the schools that responded stated that the covid-19 pandemic had affected their ability to have childcare on the school site. This was mainly due to the need to protect bubbles and restrict numbers, so not all children who required the provision were able to attend when it did reopen. The majority of schools don't think that the pandemic will affect the future use of childcare within their schools, apart from one school who thinks there will be continual short term disruptions such as children catching covid-19 leading to small numbers attending or staff catching the virus leading to club closures.

Job Centre Plus

Job Centre Plus work with the PaCE project to help parents get support for childcare whilst training and gaining skills to get a job. The PaCE Delivery Officer sits on the Early Years Development and Childcare Partnership for Monmouthshire and provides regular updates, they also liaise with the Family Information Service and Childcare Offer Engagement team.

The PaCE Delivery Officer has made the following points with regards to childcare in Monmouthshire:

- There is usually a space available at a school nursery if parents wish to access this.
- Wraparound care is limited when used with a school nursery or Flying Start provision. Parents often have to use childminders but childminder spaces are limited. In some cases, the parent would prefer to access all their provision at a private nursery in order to receive the maximum benefits of the Childcare Offer or universal credit.
- When supporting a parent who is due to start work or a training course, they contact childminders in the area and they often find that they don't have availability on the specific days they need.
- In some cases, a parent only has access to an unregistered out of school club and, therefore, they are unable to apply for funding through Universal Credit and this makes it not financially viable for the parent to take up a job offer.
- Free holiday provision has been accessed for parents on a low income and this has helped the parent to stay in work.
- Overall, there seems to be a shortage of childminders across Monmouthshire compared to previous years.

- There have only been two occasions when a parent has not been able to take up work in the last year. This was a result of the cost for children under the age of 3 years and the lack of availability with childminders.
- Forthcoming perceived challenges were that the retail and hospitality sectors have become more favourable to working parents in relation to suitable part time hours so it would be more difficult to promote a career in childcare and employers experiencing insufficient staffing levels due to working parents being unable to secure childcare for atypical working hours; this would leave a void in the labour market and increase complex childcare barriers for parents.
- Potential opportunities for partnership working may be that the Local Authority, DWP and PaCE would be able to work together to provide relevant training and support for participants moving into the childcare sector; this should be ongoing training and not a one-off course. There should also be sufficient funding to market childcare, delivery of childcare and to develop childcare to fill gaps within the local area.

Local Employers

Monmouthshire County Council sought to consult with employers to identify concerns and gaps within childcare that might impact their organisation in a positive or negative way. More specifically, questionnaires were sent out to a range of local employers in Monmouthshire to engender their views and seek to consider employers opinions on the demand, quality, accessibility and affordability of childcare. The response from businesses was extremely poor and we, therefore, liaised with Local Business Support teams based in Abergavenny, Monmouth, Caldicot and Chepstow areas to look at anecdotal evidence of any childcare issues. The conclusion from all areas of the county was that currently there are issues that are more pressing for employers than childcare. In light of the current situation, employers are having to be more flexible with working patterns and staff time off. An officer in the Business Support team stated: “I am not aware of any childcare issues with Monmouth businesses, it’s not something that has ever come up.”

Local Safeguarding Board

The MCC Lead Officer for Safeguarding in Education was contacted on behalf of the Local Safeguarding Board, as she has a role in supporting Monmouthshire childcare settings with safeguarding arrangements and concerns, and her response was as follows:
“There is evidence that safeguarding at settings is of a good standard. Settings are committed to completing safeguarding training to the standard prescribed in the MCC Corporate Safeguarding Policy; safeguarding self assessments (SAFEs) are completed and submitted to the LA for consideration; attendance is good at termly safeguarding which enables settings to keep up to date with safeguarding processes and developments; and where safeguarding concerns are raised for individual children and their families the quality of safeguarding information provided is good and advice is sought appropriately. Where concerns are highlighted regarding safeguarding arrangements at a setting, there is a willingness to work with the Local Authority and to seek and follow advice to support improvement.”

Family Information Service

Monmouthshire Family Information Service (FIS) currently supplies information and advice about childcare, early education, Childcare Offer, Flying Start, parenting courses and local services for children and young people. The FIS continues to promote new and existing childcare providers, as well as providing information regarding financial support that is available to help families with the cost of childcare. Specific information relating to Welsh medium provision and the benefits of being bilingual are regularly promoted by the FIS. Promotion and advice are provided through the telephone, email, Dewis website, council website, Instagram, Twitter and Facebook. The majority of enquiries are received through email and social media.

Feedback is received through social media campaigns, feedback forms on websites and email requests for feedback. The results of these enquiries are as follows:

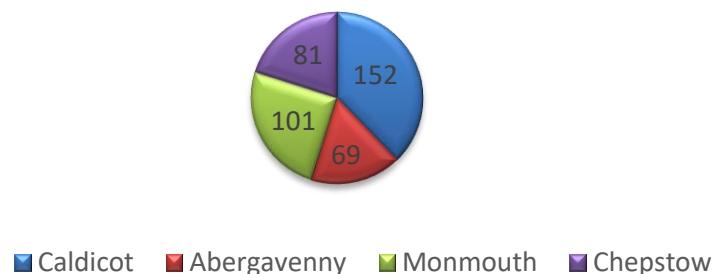
- 89% of enquirers are satisfied with the information they have received through the FIS.
- 71% of enquirers use childcare that they found out about through the FIS.
- In the last year, there have been 11 enquiries from people who have been unable to access childcare that accommodates their needs.

The parental survey indicates that 65% of parents know where to find information about childcare and 44.7% of parents know where to find information about financial assistance for childcare.

Focus Groups with Children

Consultations were held in nine different settings and a total of 461 children aged between 5 and 11 years of age contributed to this consultation activity. The distribution of respondents and their responses were as follows:

Respondents From Each Area



Response
99% would attend the provision again
96% liked the staff at the setting
95% have made new friends
95% enjoyed their time at the provision
88% want to actively travel more
80% have tried new activities
78% would recommend the provision to someone else
66% of children arrived at the setting in the car
31% walked to the provision

Welsh Education Strategic Plan (WESP)

The Early Years Manager is a member of the Welsh Medium Education Forum and has contributed towards the development of the Welsh Education Strategic Plan (WESP) 2022-2032.

Relevant targets for the first five years of this plan are as follows:

- Establish a new Cylch Meithrin in Chepstow so that there is Welsh medium childcare available in four of the five main settlements within Monmouthshire.
- Establish Welsh medium Flying Start childcare places in the south of the county.
- Welsh medium childcare in Monmouthshire is secure and sustainable.
- The demand and uptake of Welsh medium childcare places is at least 100 across the county.
- More than 60% of practitioners within childcare are confident in communicating through the medium of Welsh within the setting.
- Establish an apprenticeship scheme to support the expansion of childcare across the county, including in Welsh medium settings.
- Increase the rate of transfer from Welsh medium childcare providers and nursery provision into Welsh medium primary provision to 95%.

Planned actions to achieve these targets are:

- Continue to support existing Welsh medium childcare providers, certainly in the short term, to ensure they are sustainable.
- Explore opportunities to establish a Cylch Meithrin in Chepstow and one in Usk so that every town in Monmouthshire has a Welsh medium pre-school option. In doing so, we will continue to support increased demand for Welsh medium primary places.
- Extend access to Welsh medium Flying Start childcare places in Cylch Meithrin Cil Y Coed in the south of the county so that children of all backgrounds have access to high quality Welsh medium childcare. We will work to build the capacity to provide as many Flying Start services as possible through the medium of Welsh; for example, Baby yoga and access to a Welsh speaking Health Visitor.
- Continue to work closely with Mudiad Meithrin to provide support for existing Welsh medium childcare providers and to stimulate demand for Welsh medium provision.
- Continue providing funding to Mudiad Meithrin towards the cost of a Cylch Ti a Fi Officer and to promote the Cymraeg I Blant activities that take place within Monmouthshire.
- Provide all childcare settings with training to build the Welsh medium capacity of staff such as Cwlwm's 'Camau' Course, Mudiad Meithrin's 'Clebran' support for English medium settings and 'Crosei'r Bont' for Welsh medium Cylchoedd Meithrin.
- Develop an in-house apprenticeship scheme to encourage more Welsh speakers to train to work in childcare within the county.
- Work with Mudiad Meithrin and Welsh medium childcare providers to ensure a high level of transfer from Welsh medium settings into Welsh medium schools

Local Well-Being Assessment

Monmouthshire’s Well-Being Assessment is currently out for consultation.

This Assessment is based around five clusters: Abergavenny and surrounding area; Monmouth and surrounding area; heart of Monmouthshire which includes Usk & Raglan; Chepstow and the Lower Wye Valley; Severnside which includes Caldicot and Magor. In order to ensure consistency, the same five clusters have been used within the Childcare Sufficiency Assessment but, for ease of reference, we have referred to these as Abergavenny, Monmouth, Usk & Raglan, Chepstow and Caldicot.

The Monmouthshire Well-being Assessment 2022 provides a breakdown of the population by area and the percentage of children (aged 0-15 years) in each area, this is summarised in the table below:

	Abergavenny	Caldicot	Chepstow	Monmouth	Usk & Raglan
Population Estimate	27,000	20,000	19,762	17,000	10,476
Percentage Aged 0 - 15 Years	15.7%	16.8%	16.3%	16.9%	13.2%
Number of 0 – 15 Year Olds	4,239	3,360	3,221	2,873	1,383

The percentage of the population that are children is similar for most areas, apart from Usk & Raglan where the percentage of children aged 0 – 15 years is significantly lower. Overall, Monmouthshire has an aging population and the percentage of children aged 0 – 15 years is decreasing over time.

The section on Child Development includes the following statement relating to childcare: “Legislation requires the provision of, as far as is reasonably practicable, sufficient childcare to meet the requirements of parents in their area who require childcare to work, to undertake training or education, or to prepare for work. Parents have reported a lack of adequate childcare for children with a disability, including after school clubs, child minders, and holiday provisions. They struggle to find adequate suitable carers when using direct payments, and there is a lack of places at after school clubs. On the whole, the quality of childcare provision in Monmouthshire is very good and there is sufficient provision to meet the needs of most families; however, there are some gaps in provision that have been identified and need to be addressed (such as Welsh Language provision). An action plan was drawn up to address highlighted gaps and to reduce the barriers to accessing childcare that were identified.”

Key emerging issues identified in Monmouthshire’s Well-being Assessment include the fact that the well-being of children has been affected by disruption to their learning as a result of the pandemic and one in ten children is experiencing mental health issues (and one in four adults). There are significant income inequalities within communities with wealth sitting alongside relative poverty on a scale not seen in other parts of Wales. Research suggests that gaps between rich and poor within a community have negative repercussions for a whole range of things from educational attainment to physical health.

Population

Monmouthshire is situated in South East Wales and it occupies a strategic position between the major centres in South Wales and the South West of England and the Midlands. It is close to the big cities of Cardiff and Newport, sits on the M4 corridor towards Bristol and is on the edge of the Heads of the Valley. It is a largely rural authority and forms part of the Wye Valley Area of Natural Beauty. It borders six other local authorities, four in Wales (Torfaen, Newport, Blaenau-Gwent and Powys) and two in England (Herefordshire and Gloucestershire). It is considered to be one of the most affluent local authorities in Wales.

Unless stated otherwise, the demographic information included within this document is based on data from the Census 2011, along with more recent population estimates produced by Welsh Government. This is the same information that has been used by the Local Authority to develop the Local Well Being Needs Assessment. Information from the Census 2021 was not available at the time of producing the CSA.

Population Data

The population in Monmouthshire has been steadily increasing over the past 25 years, as has the population of Wales as a whole. The census data shows that the county of Monmouthshire had a population of 91,323 in 2011 and recent data shows that in 2021 the population had increased to 95,134. This is expected to increase still further reaching 97,089 by 2027 and 98,455 by 2032. Projections indicate that the population of Monmouthshire will reach over 100,000 by the year 2039.

Despite the fact that the population of Monmouthshire is on the increase, there is evidence to suggest that it is an aging population. The table below shows that there were 17,586 children within the 0 – 17 age brackets in 2020, which was 18.5% of the total population. It is projected that this number will slightly decrease by 2027 to 17,383 (17.9% of the projected population) and further decrease again by 2032 to 16,767 (17% of the projected population).

Age Range	2020 Data	Projected for 2027	Projected for 2032
0 – 2	2,337	2,378	2,354
3 – 4	1,795	1,709	1,695
5 – 7	2,829	2,683	2,662
8 – 10	3,088	2,872	2,824
11 – 14	4,353	4,255	3,900
15 – 17	3,184	3,486	3,332
Total	17,586	17,383	16,767

Live Birth Rates

According to Health data, there were 709 live births in Monmouthshire between 1st September 2019 and 31st August 2020; this can be broken down into areas as follows:

Abergavenny – 196

Caldicot – 218

Chepstow – 121

Monmouth – 111

Usk & Raglan – 48

This figure is 11% lower than was reported in the previous Childcare Sufficiency Assessment and again suggests that Monmouthshire has an aging population.

As of September 2021, there were 4,885 children in Monmouthshire’s secondary schools (an increase of 45 pupils from the previous CSA) and 6,701 children in Monmouthshire’s primary schools (an increase of 143 pupils from the previous CSA).

Vulnerable Children

During the lockdown between January and February 2021, there were 908 children registered as either vulnerable or children of critical key workers that would need support at one of Monmouthshire’s school hubs.

In 2021, Monmouthshire County Council had 215 looked after children, broken down into the following age ranges:

Age Range	Total
0 - 1	15
1 - 4	45
5 – 9	50
10 - 15	80
16 - 17	25

There were 9 gypsy traveller children attending Monmouthshire schools, 7 in primary schools and 2 in secondary schools.

Children with a Disability

There are 144 disabled children in Monmouthshire registered with the Children with Disabilities Team; this includes 54 children on the Disability Index (as at 31/12/2021).

During the Summer Term 2021, Monmouthshire Early Years section funded additional support to enable 15 children with additional needs to attend pre-school settings and 14 children with additional needs to attend after school clubs and holiday clubs.

As at April 2021, there were 1,069 children with minor and major disabilities or developmental delays in Monmouthshire primary schools (458 SA, 492 SA+ and 119 stated); this is an increase of 40 since the previous CSA was carried out. There were 929 children with either major or minor disability or developmental delay in Monmouthshire secondary schools (562 SA, 240 SA+ and 127 stated); this is an increase of 65 children compared to the previous CSA.

Households

Of the 42,348 occupied households in Monmouthshire, 5,567 are housing association properties, 31,987 are privately owned outright or with a mortgage and 4,794 are privately rented properties.

The Local Housing Market Assessment 2020-2025 identifies a need for 468 affordable units per annum (or 7,020 units over the plan period), of which 68% is for social rent and 32% intermediate need. The greatest demand is for one bed properties across Monmouthshire, with the level of housing need greatest in the sub-market area of Chepstow and Caldicot (at 46%).

To address housing affordability, the Council aims to deliver 10% (705 units) of the identified need on sites of 50:50 affordable and market housing, thus providing an additional 1,410 affordable and market units over the plan period.

As of June 2021, there were 1,500 unemployed people aged 16-64 years living in Monmouthshire; this is significantly lower than the All Wales average. It is anticipated that this figure will reduce still further to 1,300 in 2027.

	Total	Percentage
Number of households with dependent children	10,629	27.8%
Number of workless households with dependent children	994	2.6%
Number of lone parent families with dependent children	2,057	5.4%

Despite the fact that Monmouthshire is a relatively affluent area when compared with the rest of Wales, there are still 12.9% of dependent children living in low income families in Monmouthshire. 1,500 dependent children living in households claiming Job Seekers Allowance, 180 dependent children living in households claiming Working Tax Credit and Child Tax Credit, 270 dependent children living in households claiming just Child Tax Credit and 15,115 dependent children living in households claiming Child Benefit.

Ethnic Background

In December 2020, the ethnicity of the Monmouthshire population is 96.5% White (British, Irish or Other) and 3.5% Black, Asian or other ethnic minority.

Welsh Language Profile

According to the most recent data, the number of Monmouthshire residents who can speak, read, write and understand Welsh is as follows:

Welsh Language	2021	2017	Comparison
Speak Welsh	16.4%	15.6%	+0.8%
Read Welsh	15.1%	13.4%	+1.7%
Write Welsh	13.3%	11.9%	+1.4%
Understands Spoken Welsh	18.9%	17.4%	+1.5%

There are two Welsh medium school nurseries in Monmouthshire offering a total of 90 part time places and each of these has wrap around provision on site. There are also 67 part time childcare places available at three cylchoedd meithrin.

There are four cylch ti a fi groups situated across Monmouthshire with links to a variety of organisations that provide Welsh medium support and activities, including Mudiad Meithrin and Cymraeg I Blant.

There are currently 30 primary and 4 secondary schools in Monmouthshire but only two schools (6%) provide first language Welsh medium provision. The number of pupils of statutory school age attending Welsh Medium education has increased from 215 in January 2009 to 320 in January 2021, an increase of 49%.

Overview – Childcare Types, Services and Places

Number of Childcare Providers & Type of Services

Childcare Type	Childcare Services Offered	Registered	Unregistered
Childminder	TOTAL CHILDMINDERS	44	0
	Full day care throughout the year	43	0
	Half day care throughout the year	44	0
	Before school	41	0
	After school	44	0
	Wrap Around	34	0
	Holiday Provision	41	0
	Other	43	0
Full Day Care	TOTAL FULL DAY CARE	31	0
	Full day nursery	17	0
	Morning Session (am)	31	0
	Afternoon Session (pm)	29	0
	Before school	20	0
	After School	16	0
	Wrap Around	12	0
	Lunch	29	0
	Term Time Only	13	0
	Holiday Provision	17	0
Sessional Day Care	TOTAL SESSIONAL CARE	12	0
	Morning Playgroup (am)	10	0
	Afternoon Playgroup (pm)	4	0
	Wrap Around	0	0
	Lunch	0	0
	Term Time Only	12	0
	Holiday Provision	0	0

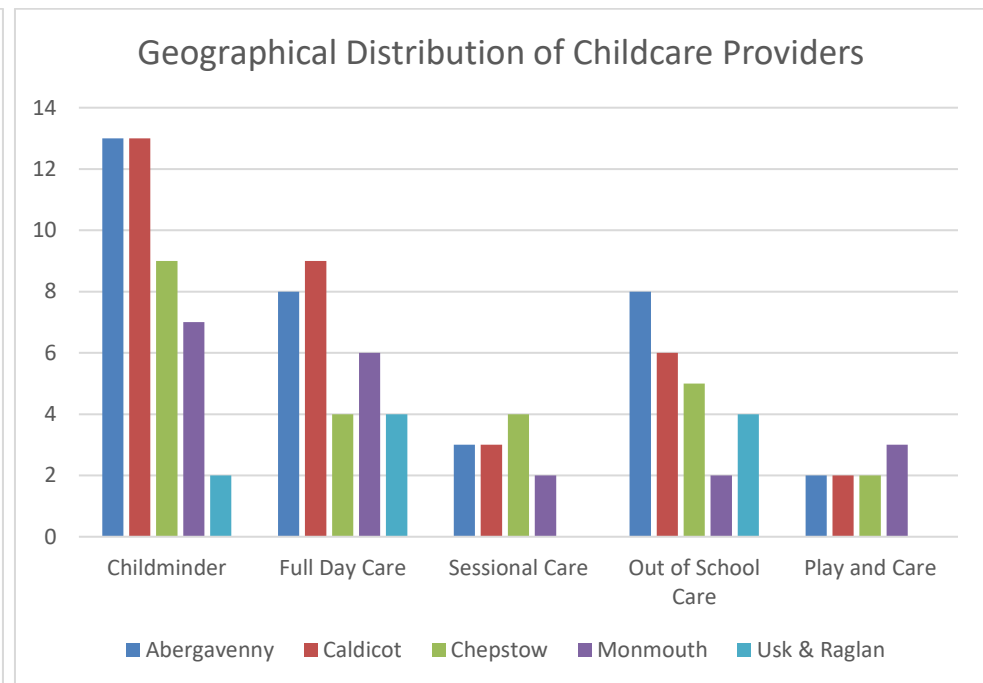
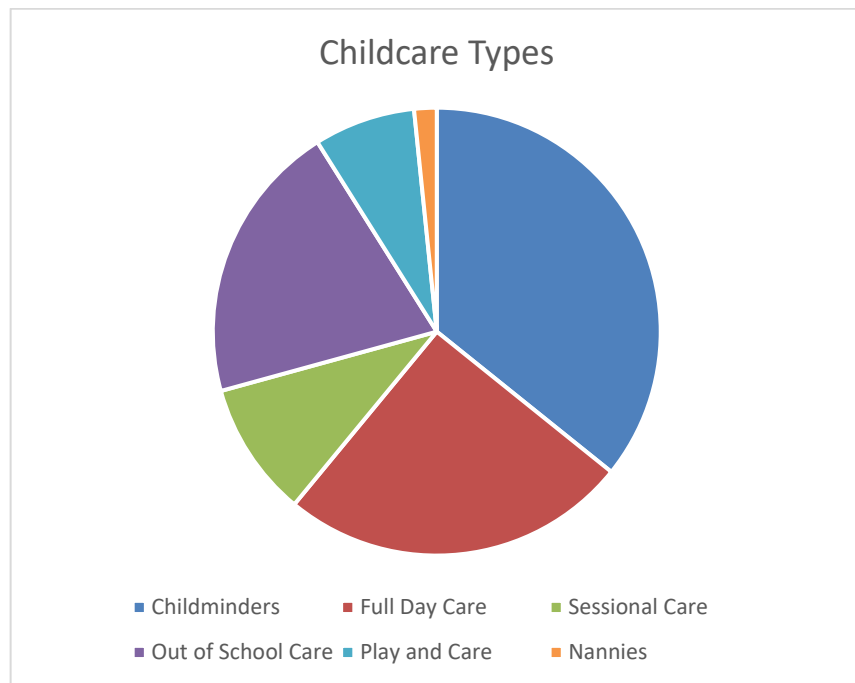
Out of School Care	TOTAL OUT OF SCHOOL CARE	23	2
	Before School	4	0
	After School	12	2
	Holiday Provision	7	0
Play and Care Provision	TOTAL OPEN ACCESS PLAY PROVISION	0	9
	Monmouthshire Games	0	4
	School Enrichment Programme	0	5
Nanny	TOTAL NANNIES	2	0
	Full day care throughout the year	2	0
TOTAL	TOTAL CHILDCARE PROVISION	114	11

- There is a good spread of childcare types across Monmouthshire offering a range of different services.
- The main change since the last full CSA was conducted in 2017 is that almost a third of sessional care providers have changed their registration to full day care, this enables them to offer more flexibility to families.
- Most childcare settings are registered with CIW, with the exception of out of school care and open access play provision. 92% of out of school childcare clubs in Monmouthshire are now registered with CIW, the remaining two settings are limited to under two hours of provision a day. There is no registered open access play provision in Monmouthshire and the unregistered provision is only available during school holidays.
- We are aware of two nannies in Monmouthshire who are registered through the Voluntary Approval Scheme, but we have been unable to make contact, so we don't have any more detail than this. We don't have any other information relating to nannies working within Monmouthshire, although three parents, one in Monmouth and two in Usk, reported through the parental survey that they currently utilise a nanny for childcare.
- There was one registered crèche operating in Abergavenny at the time of the data completion, but this setting deregistered on the 31st August 2021 and, therefore, will not be included in this assessment. We are not aware of any unregistered crèches operating in Monmouthshire at this time.

Geographical Distribution of Childcare Providers & Services Provided

Childcare Type	Number of Providers by Area					
	Abergavenny	Caldicot	Chepstow	Monmouth	Usk & Raglan	Total
Childminder	13	13	9	7	2	44
Full Day Care	8	9	4	6	4	31
Sessional Day Care	3	3	4	2	0	12
Out of School Care	8	6	5	2	4	25
Play and Care	2	2	2	3	0	9

- There is a reasonable spread of childminders across all areas, with the highest number in Abergavenny and Caldicot and the least in Usk & Raglan. The majority of childminders offer a full range of services including full day care, half day care, before and after school care, wrap around care and holiday care. 7% of childminders only operate in term time and don't provide childcare during any school holidays.
- There is a relatively even spread of full day care provision across all areas, with Caldicot having the highest number and Chepstow and Usk & Raglan having the lowest number. All providers offer a range of services and 55% of providers offer childcare during school holidays as well as term time.
- There are more sessional care providers in Chepstow than any other area. There is no sessional care in Usk & Raglan but the day care providers in this area offer a range of sessions, not just full day care. Ten sessional care providers offer morning playgroup sessions but only four providers offer afternoon playgroup sessions. None of the sessional care providers currently offer lunch or wraparound care and they are all term time only.
- Out of school care is available in all areas of Monmouthshire and approximately half of all primary schools have access to an after school club either on site or within walking distance. There are a limited number of before school clubs but this is due to the fact that 90% of primary schools in Monmouthshire operate a free breakfast club that also offers a fee paying element for childcare. There are a limited number of holiday care places, with half of all provision being offered by full day nurseries who provide care for older children during school holidays.



Childcare Places – Supply and Demand per Childcare Type

Registered Provision – Term Time

Childcare Type	Registered Childcare Places in Term Time			
	Maximum Capacity of Childcare Places Available Daily	Number of Children Using Service	Number of Vacancies	Number of Children on Waiting List
Childminder	339	371	189	30
Full Day Care	1,207	1,620	2,646	345
Sessional Day Care	269	322	270	5
Out of School Care	701	965	139	2
Play and Care	-	-	-	-
Nanny	-	-	-	-

Unregistered Provision – Term Time

The only unregistered provision operating in term time is two after school clubs that have a combined maximum capacity of 62 places available daily. We were unable to gather any information relating to vacancies or waiting lists at these settings.

Registered Provision – School Holidays

Childcare Type	School Holidays			
	Maximum Capacity of Childcare Places Available Daily	Number of Children Using Service	Number of Vacancies	Number of Children on Waiting List
Childminder	309	343	169	6
Full Day Care	893	1,306	2,332	5
Sessional Day Care	-	-	-	-
Out of School Care	250	780	1,883	0
Play and Care	-	-	-	-
Nanny	-	-	-	-

Unregistered Provision – School Holidays

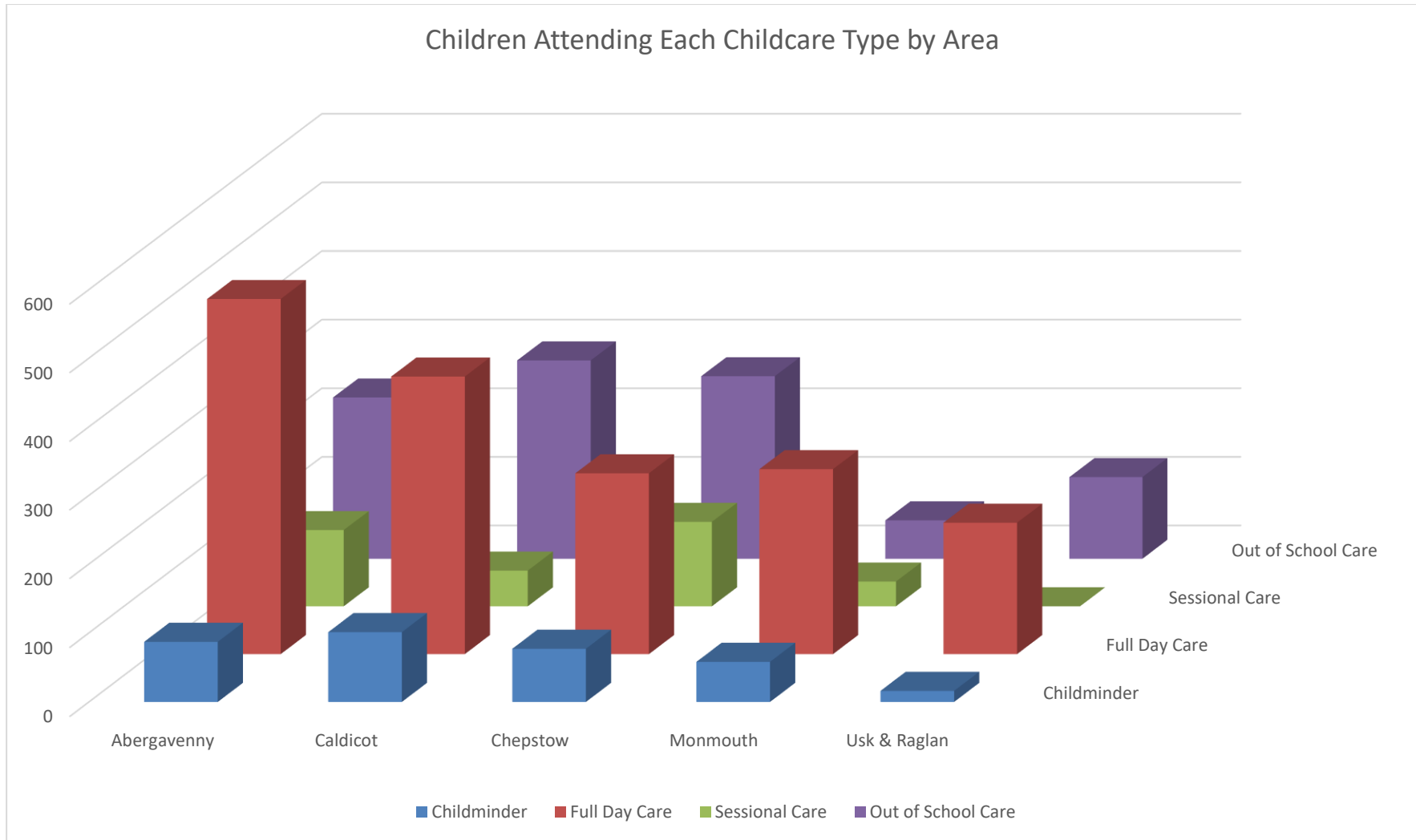
The only unregistered provision operating in school holidays is the play and care provision that has a combined maximum capacity of 560 places available daily. There were 1,322 children that used this service in the summer holidays 2021. Due to the nature of this service, the number of vacancies or on waiting lists would differ for each holiday and would only be available once the booking systems open prior to a holiday period.

Geographical Distribution of Childcare Places per Childcare Type – Supply

	Abergavenny		Caldicot		Chepstow		Monmouth		Usk & Raglan	
	Children Attending	Vacancies	Children Attending	Vacancies	Children Attending	Vacancies	Children Attending	Vacancies	Children Attending	Vacancies
Childminder	87	51	101	51	77	65	58	22	16	-
Full Day Care	517	272	404	482	263	391	269	49	191	1,452
Sessional Day Care	111	157	52	18	123	95	36	-	-	-
Out of School Care	235	11	289	46	266	47	56	12	119	23

N.B. We were unable to obtain the breakdown of those attending the open access play provision or the vacancies, as this differed every day. We were informed that the provision was well attended for the duration of the schemes in all areas it was available.

- The number of places is lower during school holidays than term time for all childcare types apart from play and care; however, this is matched by a reduced take up of places, suggesting that demand for all types of childcare is lower during school holidays.
- For each childcare type, the number of children using the service is higher than the maximum capacity, suggesting that places are shared by more than one child on different days or at different times of the day.
- Vacancies recorded are higher than the maximum capacity for full day care, sessional care and holiday clubs as providers are counting sessions that are available rather than full time places. This makes it almost impossible to use this data to make any meaningful judgements on vacancies.
- It appears that some settings have included children on waiting lists that are not yet due to start, rather than just children that are waiting for a place to become available, so this doesn't provide a great deal of information in relation to the sufficiency of childcare places.
- There are no childminder vacancies in the Usk and Raglan area but there are only two childminders in this area, so there may be a need for more.
- There are no vacancies for sessional care in the Monmouth area but, again, there are only two sessional care providers in this area. There are vacancies within full day care in the Monmouth area and these settings offer sessional care, if required.
- Out of School Care provision shows the smallest number of vacancies by childcare type. This reflects the feedback that we are receiving from parents, who report a lack of after school provision, specifically in some parts of Abergavenny.



Summary of All Childcare Types

Childminders

Analysis of Supply of Childcare Provision

Number of providers - We currently have 44 childminders operating in Monmouthshire; this figure is similar to when we completed the last full CSA in 2017. We had managed to recruit a significant number of childminders and this had increased to 64 registered childminders by March 2019. Unfortunately, the Covid-19 pandemic has had a negative impact and we have lost a total of 20 childminders since 2019. We are aware of 6 people that have completed a Childminder Briefing session and are currently undergoing training to become a childminder.

Range of services provided - All childminders provide a range of services, including half day sessions and after school provision. The majority (93%) of childminders operate during school holidays, although some don't operate in all of the school holidays. Only 77% of childminders stated that they provide wrap around care.

Number and type of childcare places filled (full time, part time, ad-hoc) – There are a total of 339 places available with childminders during term time, this reduces to 309 places during school holidays. Take up of places is shared between 371 children but only 13% of these attend full time, 78% attend part time and 9% attend on an ad hoc basis. Childminders did not differentiate between vacancies available during term time or school holidays. Although there are the highest number of childminders in the Abergavenny and Caldicot areas, the average number of children cared for per childminder is higher in the other areas, as illustrated in the table below:

Area	Number of Childminders	Children Attending	Average Children per Childminder
Abergavenny	13	87	6.7
Caldicot	13	101	7.8
Chepstow	9	77	8.6
Monmouth	7	58	8.3
Usk & Raglan	2	16	8

Vacancies and waiting lists - There are vacancies with childminders in all areas apart from Usk & Raglan; however, several childminders reported that they had a waiting list. There are 30 children currently on a waiting list for term time provision and 6 children during the school holidays; the majority of these require full day care.

Number of Welsh language places filled - There is only one childminder in Monmouthshire that provides their service bilingually and only 32% of childminders reported that they have some bilingual elements. One childminder has selected other as the language of their provision, but they haven't stated what this language is.

Opening times - Almost all childminders operate throughout the working day, with only one childminder providing after school care only. There is childcare available in all areas of Monmouthshire between 8am and 6pm, Monday to Friday. All areas apart from Usk & Raglan have care available before 8am and there are childminders open after 6pm in Abergavenny, Caldicot and Chepstow. There is one childminder working as early as 6am in the Abergavenny area and one working as late as 10pm in the Caldicot area. There are currently no childminders providing childcare on weekends and only one childminder in Abergavenny that is willing to consider overnight care. 18% of childminders have stated they are flexible with their opening hours. This range of opening times and session lengths is the same during all school holidays, apart from Christmas week when there is a limited service available across all areas.

Age range of children - There are childminders in each area of Monmouthshire that accommodate children aged between 0 and 11 years. According to the SASS data, there is only one childminder in Monmouth that accommodates children aged 12 – 14 years and there are no childminders that accommodate children aged 15 – 17 years. Take up of childminder places is spread across the age ranges but more than half (56%) are under 4 years of age, 34% are aged 4 – 7 years and 10% are aged 8 and over (only one of whom is aged 12 – 14 years).

Range of charges – The hourly rate varies between £4 and £6.50 per hour, with the greatest range being in Chepstow where they have the cheapest and the most expensive provision. The majority (75%) charge either £4.50 or £5 per hour for their childminding services. 27% of childminders charge an additional fee for food and snacks and 23% of childminders offer a discount for siblings.

Number of places filled by children who have additional learning needs or who require specialist care due to a disability - There are 8 children with additional learning needs or a disability currently being cared for by childminders, none of these are in either Caldicot or Usk & Raglan. According to our records, none of these children have been identified as requiring additional support by Monmouthshire Early Years ALN Panel.

Foundation Phase Nursery, Flying Start, Childcare Offer and other funding streams – Monmouthshire County Council doesn't approve childminders to provide Foundation Phase Nursery provision but there is one childminder in Abergavenny, Caldicot and Monmouth that provides Flying Start childcare places. 86% of all childminders in Monmouthshire are registered for the Childcare Offer and there are currently 31 children accessing the Childcare Offer through a childminder. 77% of childminders are registered for tax free childcare or childcare voucher schemes.

Covid-19 Impact – Although only 5% of childminders stated that they had positive cases in their provision, 66% of childminders had to close their doors at some point during the pandemic. The majority of childminders (91%) were satisfied with the PPE equipment they were provided with or compensated for. 20% of childminders stated that the Covid-19 pandemic had impacted their training or staffing ratios.

Summary of Key Strengths and Weaknesses

Strengths:

- There is a good spread of childminders throughout Monmouthshire and a wide range of services provided by these childminders.
- The majority of childminders are registered for the Childcare Offer.
- Childminders are willing and able to provide childcare for children with additional learning needs or a disability.
- Families generally use this provision on a part time basis or make ad hoc arrangements, so it is flexible enough to meet the changing needs of individual families.
- There are vacancies in all areas of Monmouthshire, apart from Usk & Raglan.
- There is a wide spread of ages being cared for by childminders throughout Monmouthshire. Although there are currently no childminders caring for children aged 15 – 17 years and only one reporting they care for a child aged 12 – 14 years, this is due to a lack of demand as most childminders are able and willing to accommodate older children, if required.
- Childminders supply a significant amount of after school care for children aged 5 and over.
- The cheapest childcare provision is available in the Chepstow area and they also offer sibling discounts in this area.
- The majority of childminders update their information with the FIS regularly throughout the year, ensuring all information is as accurate as possible.
- Engagement between the Local Authority and childminders has improved significantly as a result of the Covid-19 pandemic.
- Childminder recruitment is advertised regularly through the Family Information Service and Monmouthshire County Council are working closely with Pacey to recruit more childminders.

Weaknesses:

- Childminders tend to be transient so there is a relatively high turnover and a constant need to recruit new childminders.
- The number of childminders has dropped from 64 to 44 since March 2019 and the recruitment rate has been slow.
- There are no Welsh medium childminders in Monmouthshire, only one bilingual childminder and 64% have no bilingual elements to their provision.
- There are no childminders approved to provide Foundation Phase Nursery places and only a limited number offering Flying Start places.
- There is very limited provision available during atypical hours such as before 8am, after 6pm and on weekends. There is no provision overnight; however, we are aware that some childminders do provide these services to families on an ad hoc basis.

Full Day Nursery

Analysis of Supply of Childcare Provision

Number of providers - All full day care providers completed the SASS return, apart from two that started operating slightly after the SASS date, so their information was collated by the FIS and has been included within this assessment. The number of full day care providers has increased since the last full CSA was completed in 2017, although this is in part due to the fact that several sessional care providers have changed their registration to full day care in response to the increased demand for wrap around childcare as a result of the Childcare Offer. The full day care providers are spread throughout Monmouthshire with availability in each of the areas.

Range of services provided – There are 31 childcare providers registered as full day care but only 17 of these (55%) state that they provide full day care to individual children. All providers offer a morning session and only two are not open for an afternoon session. Many (65%) provide care before school and 56% provide care after school. Nearly all (94%) provide care over the lunch period. Only 17 providers (53%) remain open during the school holidays.

Number and type of child places filled (full time, part time, ad-hoc) – There are 1,207 childcare places registered as full day care across Monmouthshire and these places are currently being accessed by 1,620 children. The highest number of childcare places being used in this childcare type are in the Abergavenny area, with 517 children sharing 299 places. The majority of these children (67%) attend on a part time basis, with only 49 children (9%) attending full time. Caldicot has the second highest rate of attendance with 404 children sharing 281 places. Again, the majority of children (84%) attend part-time; however, 15% attend full time. In the other areas, the number of registered places and take up of places is lower than this but the number of children accessing childcare exceeds the number of places in Chepstow and Monmouth. There are very few children outside of the Abergavenny area using childcare on an ad hoc basis. Overall, 13% of children attend full time, 79% attend part time and only 8% attend on an ad hoc basis.

Vacancies and waiting lists - Settings in Usk & Raglan report the highest number of vacancies, but there is a particularly large day nursery in this area. Monmouth reports the lowest number of vacancies and they only have 23 full days vacant. Abergavenny has the next lowest number of vacancies, but these are spread relatively equally between full day care, morning sessions and afternoon sessions, with the highest number of vacancies after school. Chepstow have only reported vacancies for full days and morning sessions, there are no vacancies for afternoon sessions or wrap around provision. Caldicot has a significant number of vacancies, particularly for afternoon sessions. Only 38 lunch vacancies have been reported across the full day care sector and only 47 for early education places. The total number of vacancies is 2,646; although this appears high more than half of these places are in the Usk & Raglan area. These vacancies generally refer to individual daily places and the different services overlap so some of these are double counted. The full day care providers reported a total of 345 children on their waiting lists, however, 270 of these were reported by one provider in Chepstow which is likely to be an error, so it is likely the actual figure is much lower than this.

Number of Welsh language places filled - There is only one full day care provider in Monmouthshire that is registered to provide care through the medium of Welsh, this is situated in the Abergavenny area next to the Welsh medium primary school. Even though they are registered as full day care, they are only open in term time until 4pm and provide sessional care or wrap around for the school nursery. They are registered for 28 children and currently have 53 children attending. More than 90% of all full day care providers state they are English with some bilingual elements.

Opening times and range of session lengths - All areas have a range of sessions and are available between the hours of 8am and 6pm. No provider starts earlier than 7am or finishes later than 6:30pm and none offer overnight or weekend care. Almost half of all full day care providers (48%) close by 4pm at the latest; there is one full day care provider in Caldicot that currently only opens between 9am and 12:30pm. There are settings in each area operating during school holidays.

Age range of children – There is full day care available in each area for children under 5 years of age, although less than half of all providers cater for children aged 2 and under and only 6 full day care providers (19%) take children older than 5, none of which are in the Chepstow area. Three full day care providers are able to offer care to children aged 8 – 11, these are in the Abergavenny, Caldicot and Usk & Raglan areas. No settings are registered for children aged 12 or older. More than half (53%) of all children attending are aged 3 and 4 and only 4% are aged 5 and over.

Range of charges – According to the SASS data, the hourly cost of full day care ranges between £4 and £8, with the average cost working out as £5.29 per hour and 55% of providers charging £4.50 or £5 per hour. The majority (58%) of full day care providers have included the cost of food in their hourly charge. Only three providers allow the children to bring their own lunch, the remaining 10 providers charge an additional fee for lunch and snacks. 10 settings offer a discount for siblings, none of these are in the Usk & Raglan area.

Number of places filled by children who have additional learning needs or who require specialist care due to a disability – According to the SASS, there are 46 full day care places filled by children who have a disability or additional learning need; however, the number of children referred to the MCC Early Years ALN Panel is slightly higher than this.

Foundation Phase Nursery, Flying Start, Childcare Offer and other funding streams – Out of the 31 full day care providers, 22 are approved to provide Foundation Phase Nursery places and these are spread across the five areas of the county. Two full day care providers in Monmouth and one in Abergavenny are signed up to provide Flying Start places. All except one full day care provider (97%) are registered for the Childcare Offer and these are all currently receiving funding through the Childcare Offer, with a total of 290 children currently accessing the Childcare Offer at a full day care setting.

Covid-19 Impact – Although only 13 full time care providers stated that they had positive cases in their provision, 26 had to close their doors at some point during the pandemic and these were spread across all five areas. The majority of providers (94%) were satisfied with the PPE equipment they were provided with or compensated for. Just over half of all full day care providers stated that the Covid-19 pandemic had impacted their training or staffing ratios.

Summary of Key Strengths and Weaknesses

Strengths:

- There is a good range of services provided by full day care settings and more than half of all settings are available during school holidays.
- Full day nursery is the most commonly used service and can accommodate children on a full-time, part-time or ad hoc basis.
- There are currently full day care vacancies reported across all areas.
- There are a wide range of session lengths available in all areas and there is provision in all areas between 8am and 6pm.
- Children with additional learning needs or a disability are catered for.
- There are a sufficient number of places available for Foundation Phase Nursery provision and the Childcare Offer and eligible parents or carers are able to access the full 30 hours at one setting.
- Hourly charges vary considerably; however, the majority are in line with the hourly rate for Foundation Phase Nursery and the Childcare Offer.

Weaknesses:

- There is only one Welsh medium full day care provider in Monmouthshire and it does not provide childcare after 4pm or during school holidays.
- Very few full day care providers offer before school or wrap around care; this is partly due to the age range of the children they care for as many of them are currently only registered for children up to the age of 5 years.
- There are very few vacancies for full day care reported in the Monmouth area.
- There are no full day care providers offering overnight or weekend care and only one provides childcare after 6pm.
- There is limited provision for children aged over 5 but this may be due, in part, to low demand because of the nature of this type of care.

Sessional Day Care

Analysis of Supply of Childcare Provision

Number of providers - All sessional care providers in Monmouthshire are registered with CIW, we are not aware of any non-registered provision. The number of sessional care providers has dropped in recent years, either closing due to a lack of numbers or having registered as full day care. One third of our existing sessional care providers are Flying Start settings maintained by the Local Authority and they only take Flying Start children.

Range of services provided - There is no sessional care available in Usk & Raglan but the day care providers in this area offer sessions, if required. All settings, apart from the two Welsh medium settings, offer morning sessions and this is available in the other four areas of Monmouthshire. There are only two settings offering both morning and afternoon playgroup places and there are no afternoon sessions available in Chepstow. There is no record of any provision providing wraparound or lunch time care. No sessional care provision is open during school holidays.

Number and type of child places filled (full time, part time, ad-hoc) – There are 269 sessional care places available across Monmouthshire and there were 322 children accessing this provision in the summer term 2021. There is a significantly higher take up of places in morning sessions than afternoon sessions. There are more places filled on a part time basis (66%) than full time (34%), there are no children attending sessional care provision on an ad hoc basis.

Vacancies and waiting lists - There are a total of 270 childcare places reported as vacant with the majority being in the Abergavenny area (58%), although there seems to be a discrepancy as 119 lunch time spaces have been reported even though no one reported providing lunch time care. If these are removed, there are only 151 vacancies and there are no vacancies reported in the Monmouth settings. Only 5 children have been reported as being on a waiting list, all of these are for lunch time provision in the Caldicot area, which is not currently offered at any settings according to the information provided in the SASS.

Number of Welsh language places filled - There are two Welsh medium sessional care settings in Monmouthshire, one in the Caldicot area and one in the Monmouth area. They both provide care during the afternoons in term time only. They are both flexible with their opening hours and will provide additional sessions to meet demand. During the summer term 2021, there were 28 children using Welsh medium sessional care. All of the remaining sessional care providers are English with some bilingual elements.

Opening times and range of session lengths – Only two settings provide both morning and afternoon sessions. All others operate sessions that are between 2 ½ hours and 3 ¾ hours and try to coincide with school times, particularly those on school sites. There are no sessional care providers operating before 8:45am or after 3:15pm.

Age range of children – According to the SASS data, 10 settings are registered for 2 year olds, 8 are registered for 3 year olds and 7 for 4 year olds; none of the settings appear to cover the full age range of 2 – 4 year olds. There are more 2 year olds than any other age group but this is due to the fact that four settings are Flying Start and only cater for 2 year olds. There is a fairly equal split of places being taken up by 3 year olds (29%) and 4 year olds (27%), with the majority of 3 year olds being in the Chepstow area and the majority of 4 year olds being in the Abergavenny area.

Range of charges – Flying Start provision is free, the other settings range in price from £2.65 to £5.50 per hour. The cheapest provision is in the Monmouth area and the most expensive provision is in the Caldicot area. Sessional care appears to be the cheapest of all childcare provision available. Two settings don't provide a snack, four settings include the cost of food and snacks within their hourly rate, whilst the remaining six settings charge an extra fee for food. Only two settings offer a discount for siblings, both are in the Caldicot area.

Number of places filled by children who have additional learning needs or who require specialist care due to a disability - There are 6 children with additional learning needs or a disability attending sessional care, these are all in the Abergavenny and Caldicot area and are known to MCC Early Years ALN Panel.

Foundation Phase Nursery, Flying Start, Childcare Offer and other funding streams – There are four sessional care settings that are approved to provide Foundation Phase Nursery provision and a different four sessional care settings offering Flying Start places. There are six sessional care providers registered for the Childcare Offer and during the summer term 2021, there were 22 children accessing the Childcare Offer across these six settings. Six settings reported that they were registered for tax free childcare or childcare voucher schemes.

Covid Impact – 8 out of the 12 providers had to close at some point due to the pandemic but only 3 sessional care providers reported having a positive case in their setting. Nearly all (83%) reported that they were satisfied with the PPE equipment they were provided with or compensated for. Only two sessional care providers stated that the Covid-19 pandemic had impacted their training or staffing ratios.

Summary of Key Strengths and Weaknesses

Strengths:

- A third of our sessional care providers are Flying Start providers and offer free childcare places.
- There are sessional care providers that are approved to offer Foundation Phase Nursery provision.
- Provision for children with special educational needs or a disability is good and support is available for those who need it.
- There are sufficient vacancies for sessional care in all areas of Monmouthshire, apart from Usk & Raglan where there are no sessional care settings.
- There are a range of charges for sessional care but it tends to be cheaper per hour than other types of childcare.
- Sessional care provision is available through the medium of Welsh in both the south and the north of the county.

Weaknesses:

- There are fewer sessional care providers than any other type of registered provision and there are no sessional care providers available in the Usk & Raglan area. We are, however, aware of childcare providers in this area that are registered as full day care but also offer sessional care.
- The hours of sessional care available mean it is often unsuitable for working parents.
- The range of services available is limited and is only available during term time.
- There are limited sessional care places available in the afternoon.

Out of School Care

Analysis of Supply of Childcare Provision

Number of providers – There were 14 providers that completed their SASS as out of school providers or full day care and out of school providers; however, many of these operate more than one type of provision, so we have counted these separately. There are also two out of school clubs that are not currently registered with CIW but offer an after school club that runs for under two hours a day, this makes a total of 25 provisions.

Range of services provided – The majority of out of school provision is after school care (56%) and this is available in all five areas. There are only four providers who state they provide before school care and none of these are in the Chepstow area, but this doesn't include school free breakfast clubs that operate in 27 of our 30 primary schools. There is limited registered holiday care available, although there is provision in all areas apart from Monmouth.

Number and type of child places filled (full time, part time, ad-hoc) - There are 1,013 places available in out of school clubs and a total of 965 children accessed this provision in summer 2021; however, some of these may be the same children attending different types of provision. The majority of out of school places are at after school clubs (61%), with 14% at breakfast clubs and 25% at holiday clubs. The majority (56%) of children attend this provision part time, 8% attend full time and 36% attend on an ad hoc basis.

Vacancies and waiting lists - There are no vacancies at before school clubs in Caldicot, Chepstow and Monmouth and only a few spaces in Abergavenny and Usk & Raglan. There are after school club vacancies across all areas, although only 2 reported in the Abergavenny area. The SASS data did not record school holiday vacancies. There are only 2 children on a waiting list for after school care and this is in the Usk and Raglan area.

Number of Welsh language places filled – There are no out of school providers that operate through the medium of Welsh. The majority (68%) report to be English only and only 32% of providers stated that they run their service in English with bilingual elements.

Opening times and range of session lengths - Before school clubs start at different times between 7:30am and 8am and all finish at 9am when school starts. After school care starts when the feeder school finishes for the day and end between 5:25pm and 6pm, there are no after school clubs that operate after this time. Holiday club provision begins between 7am and 8am and finishes between 5:30pm and 6pm.

Age range of children – All after school provision caters for children aged 5 – 7 years and all bar one provider in the Abergavenny area also cater for children aged 8 – 11 years. One provider in Abergavenny and one in Caldicot are registered for children aged 12 – 14 years. There are only six settings that cater for children aged under 5 years. 91% of places taken up in out of school provision are children aged 5 – 11 years and 8% are 4 year olds. There are also three children aged 12 – 14 years and four children aged 3 years accessing out of school provision.

Range of charges – Hourly costs range between £2 per hour and £8 per hour with before school clubs tending to be the cheapest and holiday care the most expensive. The lowest cost is in the Chepstow area and the highest cost is in the Abergavenny area, with two providers charging £8 per hour. The average cost of out of school provision in Monmouthshire is £4.55 per hour. Three clubs don't provide food and three clubs charge extra for food, these are all in the Caldicot area. Sibling discounts are available at 7 clubs but none of these are in the Caldicot area.

Number of places filled by children who have additional learning needs or who require specialist care due to a disability - There are 26 children reported to have additional learning needs or a disability attending out of school care and they are spread across all areas apart from Monmouth.

Covid Impact – All out of school care clubs closed their doors at some point during the pandemic and many remained closed for a significant period of time. Despite this, only 10 out of school care providers reported having a positive case in their clubs. All providers reported that they had sufficient PPE equipment. 15 settings stated that the Covid-19 pandemic had impacted on their training and 3 had seen an impact on staffing ratios.

Summary of Key Strengths and Weaknesses

Strengths:

- There is a good spread of after school childcare available across Monmouthshire and nearly all out of school provision is now registered with CIW.
- After School Club provision is well attended and utilised mostly by primary school aged children, who would find it more difficult to access other types of childcare provision.
- There are sufficient vacancies for out of school provision in almost all areas.
- The average cost of out of school care is similar to that of other childcare types but 68% of clubs are cheaper than this.
- Children with additional learning needs or a disability are supported to enable them to access out of school childcare.

Weaknesses:

- There is no Welsh medium out of school childcare provision in Monmouthshire.
- There are very few before school clubs in Monmouthshire; however, this is due to the fact that the majority of Monmouthshire primary schools have a free breakfast club on site, so there is no demand for this additional provision.
- There is no registered holiday care provision in the Monmouth area and only one club in the Chepstow and Usk & Raglan areas.
- Although there are vacancies reported in after school clubs in all areas of Monmouthshire, this is very limited in the Abergavenny area and we have been made aware through our FIS that there is no availability in some parts of Abergavenny, particularly after 5.30pm.
- None of the after school clubs or holiday clubs operate after 6pm; there is no provision for parents or carers that work atypical hours.

Play and Care Provision

Analysis of Supply of Childcare Provision

Number of providers - There is no registered open access play provision in Monmouthshire and none currently available during term time. Although this 'play and care' provision isn't classed as childcare, the data is included in this assessment because of the importance parents place on these services to provide childcare for their children during the school holidays.

Range of services provided - Provision was available at nine locations during the summer holidays, three in Monmouth, two each in Abergavenny, Caldicot and Chepstow; there is no provision in Usk & Raglan. The intention is that four of these settings will operate in each of the school holidays.

Number and type of child places filled (full time, part time, ad-hoc) – There were a total of 560 places available across the four areas and 1,322 children attended this provision during the summer holidays 2021. All places were required to be booked in advance and the majority of places were taken up on a part time or ad hoc basis.

Vacancies and waiting lists – As places were booked in advance for both schemes, waiting lists were managed and attendance was not at capacity for any provision. It is estimated that another 400 children could have been accommodated over the summer holidays to maximise capacity.

Number of Welsh language places filled - There are no Welsh language places available, all providers describe themselves as English only.

Opening times and range of session lengths – The Monmouthshire Games were open from 8am – 5pm for five weeks of the summer holidays. The School Holiday Enrichment Programme was open from 9:30am – 2:30pm for four weeks during the summer holidays.

Age range of children – All provision was available to children aged between 5 and 11 years, breakdown of take up by age was not available.

Range of charges - There was no cost to attend the School Holiday Enrichment Programme. The Monmouthshire Games cost £20.50 per day; this equates to as little as £2.28 per hour if a child attends for a full day. There was also some funding to provide free places for 36 vulnerable children.

Number of places filled by children who have additional learning needs or who require specialist care due to a disability - 50 children with additional learning needs or disability were supported to attend Monmouthshire Games and 42 to attend Summer Holiday Enrichment Programme.

Covid-19 Impact – Both the Monmouthshire Games and the School Holiday Enrichment Programme did not run in the summer 2020 as a direct result of the Covid-19 pandemic. The schemes were able to go ahead during summer holidays 2021 with various safety measures in place.

Summary of Key Strengths and Weaknesses

Strengths:

- The provision offered during the school holidays was well attended and it is intended to offer similar provision during future school holidays.
- There is support available to enable vulnerable children and those with additional learning needs or a disability to attend.
- Over half of the provision available is free of charge and the other provision is relatively cheap when compared with registered childcare.

Weaknesses:

- There is no play provision outside of the four main towns of Monmouthshire and there is no provision in the Usk & Raglan area.
- The provision is unavailable during term time and the School Holiday Enrichment Programme is only available in the summer holidays.
- There is no Welsh medium or bilingual open access play provision in Monmouthshire.
- The provision is only available to children aged 5 – 11 years.

Nannies

Analysis of Supply of Childcare Provision

There are currently two nannies registered in Monmouthshire and neither of these, or any other nannies, advertise through the Family Information Service. We have promoted this through social media and asked them to share their details with the FIS, but this hasn't been forthcoming; therefore, we were unable to collect any specific data relating to nannies.

Summary of Key Strengths and Weaknesses

There is a need for more information as to the availability of nannies within Monmouthshire and to encourage existing nannies to register through the voluntary approval scheme.

Foundation Phase Nursery Provision (FPN)

Number of schools and childcare providers funded to provide Foundation Phase Nursery places – In Monmouthshire, children can access their entitlement to free part time early education (FPN) at either a Local Authority maintained nursery class or an approved non-maintained childcare setting. We currently have 12 LA nurseries and 26 approved non-maintained childcare providers; these settings are spread throughout all areas of Monmouthshire. The majority of the non-maintained settings are registered as full day care, there are only 4 sessional care providers but all settings offer sessional care, if requested. In Monmouthshire, we don't currently use childminders to deliver early education.

Two of the Local Authority nurseries operate through the medium of Welsh, one in Abergavenny and one in Caldicot. None of the approved non-maintained settings operate through the medium of Welsh, they are all English with some bilingual elements.

Number of Foundation Phase Nursery places filled, required and available – There are currently 1,416 Foundation Phase Nursery places available in Monmouthshire; 696 of these places are in non-maintained childcare settings and 720 are in LA school nurseries. Take up of places is at its highest in the summer term, as this is when there are the most eligible children. Take up of places in the summer term 2021 is recorded in the table below and compared with places available:

Childcare Type	Abergavenny		Caldicot		Chepstow		Monmouth		Usk & Raglan		Total	
	Places	Take up	Places	Take up	Places	Take up	Places	Take up	Places	Take up	Places	Take up
Full Day Care	141	155	140	87	90	90	74	69	145	91	590	492
Sessional Care	48	32	0	0	58	41	0	0	0	0	106	73
LA Nursery	210	134	270	202	120	83	120	62	0	0	720	481
Total	399	321	410	289	268	214	194	131	145	91	1,416	1,046

The overall take up of places has reduced compared to previous years, there were 1,046 places taken up in the summer term 2021 (74% of places) compared with 1,220 places in the summer term 2019 (86% of places). This is partly due to the drop in the birth rate and partly to the introduction of the Childcare Offer, as 20 hours is sufficient for some families so they are choosing to keep them at their existing setting rather than move them to an approved Foundation Phase Nursery provider or school nursery. Take up of FPN has also been impacted by the pandemic; some parents are now working from home and no longer need childcare, others are making alternative arrangements as they are reluctant to use childcare provision due to infection rates.

In all areas, apart from Caldicot, there are more children accessing their Foundation Phase Nursery place in approved non-maintained settings rather than LA school nurseries. The highest number of FPN places taken up is in the Abergavenny area, this is also the area with the lowest percentage of surplus

places (20%), along with Chepstow. Take up of places is monitored by geographical area on a termly basis and it has been relatively consistent for a number of years. Additional childcare settings are only approved to provide Foundation Phase Nursery places when a need has been highlighted in a specific geographical area. The reason for this is to ensure there are sufficient places in all areas, whilst keeping surplus places to a minimum to improve the sustainability of settings and schools.

Number of parents not claiming their free entitlement and reasoning – Less than 2% of respondents to the parental survey stated they were not claiming their free entitlement to early education (FPN). The reasons given for this were that one parent preferred to use a childcare setting that was not approved for Foundation Phase Nursery and one parent was not aware of this entitlement. Based on the take up of places when compared with live birth data, there are not a large number of Monmouthshire children that are not accessing their free entitlement to early education (FPN). It is estimated that approximately 75% of eligible children accessed their entitlement to free part time Foundation Phase Nursery provision in the summer term 2021. Again, this is slightly lower than previous years, as take up in the summer term 2019 and the years preceding this was nearer 85% of eligible children.

Childcare required by parents to enable them to claim their full entitlement – There were 8 respondents to the survey who asked for Foundation Phase Nursery provision to be available for longer hours each day to enable them to fit in with working hours. Many of our approved Foundation Phase Nursery providers are registered for full day care and offer wrap around childcare. Many of our sessional care settings and LA nurseries have arrangements with other childcare providers who will collect from the setting and provide wrap around childcare in order to try and address this issue.

Summary of Key Strengths and Weaknesses

Strengths:

- There is a good range of Foundation Phase Nursery providers so parents can choose the type that best suits their needs.
- Monmouthshire has cross border arrangements in place with all six neighbouring authorities (in England and Wales) so parents can access provision across the border if this is more convenient.
- Provision with non-maintained childcare providers is very flexible; children only have to attend for three sessions a week in order to access funding and their entitlement can be shared across more than one setting.
- Wrap around childcare is available with most providers to meet the needs of working parents.
- Take up of Foundation Phase Nursery provision is very good.

Weaknesses:

- There is no flexibility within LA school nurseries, children must attend for either five morning or five afternoon sessions a week and many schools don't have wrap around provision on site.
- There is a lack of Welsh medium Foundation Phase Nursery places, particularly within non-maintained childcare settings.

The Childcare Offer

Number of childcare providers registered to provide the Childcare Offer - We currently have 74 childcare providers within Monmouthshire registered for the Childcare Offer, this can be broken down as indicated in the table below:

	Abergavenny	Caldicot	Chepstow	Monmouth	Usk & Raglan	Total
Childminder	10	8	7	8	2	35
Full Day Care	9	7	4	5	4	29
Sessional Care	2	2	2	3	1	10
Total	20	20	14	12	5	74

There are also 63 childcare providers situated out of county that are registered to provide Childcare Offer places for Monmouthshire children; however, of these, only 29 are currently funded for children through the Childcare Offer.

Attendance profile of children accessing the Childcare Offer – In the autumn term 2021, there were 418 children that accessed the Childcare Offer. Take up is always at its lowest in the autumn term as there are less eligible children. Take up was 553 in the spring term 2021 and 601 in the summer term 2021, when take up tends to be at its highest.

	Abergavenny	Caldicot	Chepstow	Monmouth	Usk & Raglan	Out of County	Total
Childminder	8	9	6	12	-	-	35
Full Day Care	76	83	67	35	45	39	345
Sessional Care	15	11	4	3	-	5	38
Total	99	103	77	50	45	44	418

The highest take up of children using Childcare Offer funding is in the Caldicot area (25%), closely followed by the Abergavenny area (24%). Approximately 10% of Monmouthshire children using Childcare Offer funding access a setting in another local authority.

Number of parents not accessing the Childcare Offer and reasoning – 76 respondents (17.2%) of the parental survey stated that they were accessing the Childcare Offer but only 2 respondents (0.5%) stated they were not claiming the Childcare Offer. The reason given for this was that they choose not to use childcare as they don't need it. There were no other comments in the parental survey specifically related to the Childcare Offer.

Summary of Key Strengths and Weaknesses

Strengths:

- Most parents appear to be aware of the Childcare Offer.
- Uptake of this scheme is good as approximately half of all 3 to 4 year olds accessed this funding in the autumn term 2021.
- More than 85% of childcare providers are registered for the Childcare Offer and this is spread across all childcare types and areas of the county.
- Families are able to access provision across the border if this is more convenient.
- There are 24 providers across Monmouthshire that are able to offer both Foundation Phase Nursery places and the Childcare Offer, so parents can access the full 30 hours at one setting; 14 of these childcare settings are also open during school holidays.
- Anecdotally, the Childcare Offer funding has helped several parents in Monmouthshire start or return to work or study.

Weaknesses:

- With Monmouthshire being so close to the border of England, there are many English families who wish to use childcare in Monmouthshire but are unable to access funding through the Childcare Offer.
- There are many rules and complications surrounding the Offer and its application process leading to much confusion amongst some parents.
- Many parents assume they will get the full 30 hours at any provision they wish, and this is not necessarily the case.
- The Childcare Offer doesn't benefit many of our vulnerable families, particularly those where parents or carers are unemployed.
- The Childcare Offer is not accessible until the term following a child's birthday, many parents could benefit from it when their children are younger and childcare is at its most expensive.

Flying Start Provision

There are only a small number of childcare providers funded to provide Flying Start in Monmouthshire, as the number of families eligible for Flying Start is much lower than other local authorities. All of the Flying Start only providers are run by the Local Authority and they are registered as sessional care. There is one LA Flying Start setting in each of the four main towns - Abergavenny, Caldicot, Chepstow and Monmouth. There is no Flying Start provision in Usk and Raglan as there are no eligible children in this area.

Childcare Type	Abergavenny		Caldicot		Chepstow		Monmouth		Total	
	Providers	Places	Providers	Places	Providers	Places	Providers	Places	Providers	Places
Full Day Care	1	6	0	0	0	0	2	12	3	18
Childminder	1	2	1	2	0	0	1	2	3	6
Flying Start Only Provision	1	16	1	20	1	12	1	20	4	68
Total	3	24	2	22	1	12	4	34	10	92

There is one full day care provider in Abergavenny that can provide childcare to Flying Start children through the medium of Welsh. Flying Start are working with Welsh medium settings in Caldicot and Monmouth with the intention of bringing them on board in the near future.

Number of places filled and required - According to the Flying Start Manager, all places in Abergavenny are taken up and the provision in Monmouth and Caldicot are both running at 80% capacity. Chepstow are currently only running at 50% capacity but take up changes on a termly basis.

Number of parents living in a Flying Start area who are accessing free childcare – Of the 149 respondents that answered this question in the parental survey, only 10.7% stated that they were accessing free childcare through Flying Start. The reasons given for not accessing free childcare suggests that most of these families were not eligible for Flying Start. According to data supplied to Welsh Government, the percentage of 2 year old children eligible to receive Flying Start in Monmouthshire is 16%.

Number of parents not accessing free childcare and reasoning – The main reasons given for not accessing free childcare is that they do not live in a Flying Start area or they do not know what Flying Start is (likely to be because they do not live in a Flying Start area.) One respondent stated they were unable to access Welsh medium Flying Start provision, two respondents do not need to access the provision and four respondents needed childcare that offered longer hours.

Summary of Key Strengths and Weaknesses

Strengths:

- Take up of Flying Start places is good and most families who are eligible do access this provision.
- In Abergavenny, parents can choose between 3 different settings, including Welsh medium childcare.
- Children who access Flying Start generally receive the support they need in many areas, including health and education.

Weaknesses:

- In some areas, the type of childcare available that provides Flying Start places is limited to sessional care and this doesn't meet the needs of working parents.
- Welsh medium Flying Start childcare is currently only available in Abergavenny.
- Flying Start is not available in all areas; there are many vulnerable families in other areas of Monmouthshire that could benefit from this free provision but they are ineligible to do so.

Free Breakfast Club Provision

As at autumn term 2021, there were 27 primary schools in Monmouthshire that operated a free breakfast club; two additional schools have a fee paying before school childcare club serving the school instead. There is only one primary school in the Caldicot area of Monmouthshire that doesn't have access to a breakfast club of any kind. There are no free breakfast clubs at any secondary school in Monmouthshire.

Services & Take Up	Number of Clubs and Take Up by Area					
	Abergavenny	Caldicot	Chepstow	Monmouth	Usk & Raglan	Total
Total Number of Breakfast Clubs	8	7	5	6	1	27
Average Attendance for Free Breakfast	293	139	160	155	46	793
Average Attendance for Before School Childcare	135	39	99	101	39	413

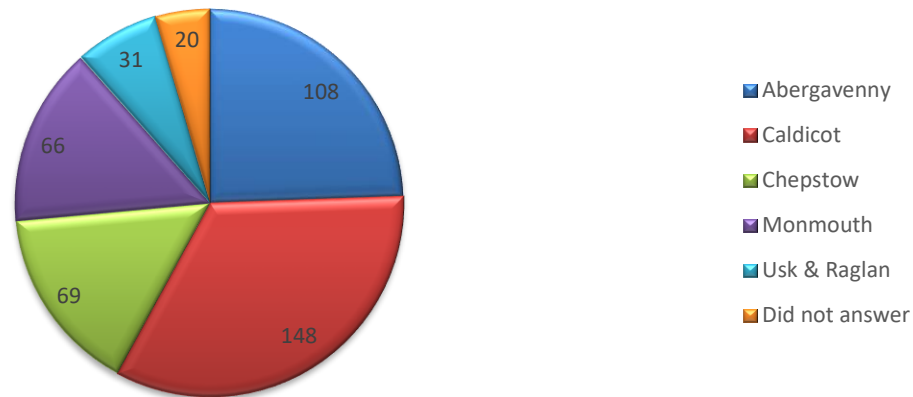
All 27 primary schools in Monmouthshire that participate in the free breakfast scheme also offer a fee paying childcare element for children that arrive before the free breakfast club commences; however, 3 of these primary schools didn't operate this provision during the autumn term 2021 due to Covid-19.

Understanding the Needs of Parents/ Carers

Number of Responses to the Parental Survey

- There were 443 responses received to the parental survey and these were spread across all areas of Monmouthshire.
- There were more responses received from the Caldicot area than any other area of Monmouthshire.
- This is a relatively low response rate when compared to the population of Monmouthshire and the number of families that we know are using childcare, so the information that can be obtained from it is limited and isn't necessarily representative of the entire childcare market.

Respondents By Area



Analysis of Current Use and Future Demand for Childcare Provision

Foundation Phase Nursery – There were 118 respondents who access early education (FPN) funding in Monmouthshire plus another 9 respondents who access the funding in another authority. The only reasons for parents not accessing the funding were that they were using a provider not approved for the funding (1) and they didn't know what it was (1). There were 8 parents that commented that the part time aspect of it was not suitable to support the needs of working parents and one respondent commented that it should be more widely available at more schools.

Flying Start – There were 16 respondents who stated that they access Flying Start provision and 133 respondents who have children of that age but do not access Flying Start; 15 respondents were not sure whether or not they use the provision. 44 respondents stated the reasons why they don't access Flying Start, with the most popular reason being that they are not eligible (12) or that it is not available in their area (12). 11 respondents stated that they did not know what Flying Start provision was and another 5 responded that the Flying Start childcare hours available were not long enough for their needs.

The Childcare Offer – Of the 82 respondents who have children of the right age, 78 (95%) of them are accessing the Childcare Offer. Only 3 respondents said that they did not access the funding and the reasons were that they didn't require childcare (1), they didn't work so were not eligible (1) and one respondent didn't answer the question.

Children who have additional learning needs or a disability – 41 respondents stated their child has a disability, 61 respondents stated their child had a special educational or additional learning needs. Although it is not clear from the survey how many of those use or require childcare provision, there were 4 respondents that wished their childcare was better at meeting their child's additional needs and there were 16 respondents that commented that there was a lack of suitable childcare for children with additional learning needs.

Childcare used in term time - In term time, the most utilised type of childcare is informal free childcare with family or friends (25%), closely followed by private day nurseries (22%) and breakfast clubs (14%). Nobody reported using a drop off creche or an au pair. 66 respondents (9%) reported not using childcare during term time.

Childcare used in school holidays - In school holidays, the most utilised type of childcare again is informal free childcare with family or friends (37%) followed by private day nurseries (25%) and holiday care (19%). No respondents used a cylch meithrin or a drop off creche. 6 respondents stated they use a playgroup, but they must be using a full day care provider, as we have no sessional care open during school holidays. 56 respondents (10%) recorded that they did not use any childcare during the school holidays but there were also 70 fewer responses for those using childcare during school holidays compared to term time, so presumably the actual number is higher than this. It is likely that some respondents would refer to the play provisions running throughout the county as holiday care or playscheme provision, even though it's not classified as that.

Number of hours childcare is used – The most common number of hours that childcare is used during term time is between 6 and 10 hours (18% of respondents), followed by 0 – 5 hours (16%) and then 26 – 30 hours (15%). The highest number of hours used per week during term time was 60 hours. During school holidays, the most common number of hours that childcare is used is between 0 – 5 hours (17%) followed by 26 – 30 hours (16%). The highest number of hours used per week during school holidays was 80 hours.

Childcare costs – The highest number of respondents (26%) spent between £100 - £199 on childcare per week, closely followed by 19% of respondents who spend between £50 and £99 per week. 17% of respondents do not spend anything on childcare each week but 5% of respondents spend £300 or more on childcare each week.

Childcare satisfaction – Over half (56%) of all respondents were very satisfied with the childcare providers they currently use. 120 respondents (33%) were quite satisfied with the childcare provision accessed. There were only 7% of respondents that were either quite or very dissatisfied with the childcare provision they use.

Improvements to childcare – 59 respondents stated that there are areas of childcare provision that needed to be improved. These included that childcare needed to be more affordable (15%), earlier mornings available (14%), later evenings available (14%), more flexible sessions available (12%) and better quality provision (12%). Reasons added in on top of the drop down list included that the childcare they need doesn't exist (8%) and that parents required more support from providers (2%).

Reasons for not accessing childcare – There were 297 respondents who explained the reasons why they do not access childcare. The most common response from 17% of parents was that childcare is too expensive. This was closely followed (16%) by parents using informal childcare such as a family member or friend. Other reasons were being a stay at home parent and having no need for childcare (8%) and the childcare available not being flexible enough for their needs (8%).

Number of Welsh medium places used – 89% of respondents stated that they did not use childcare through the medium of Welsh, 5% do use Welsh medium provision and 6% were unsure. Of the respondents that didn't access Welsh medium childcare, 9% would like to and 17% would consider it. 63% of respondents stated they wanted to use childcare in the medium of English. Even though there were only 66 respondents altogether who said they wanted to use or would consider using Welsh medium childcare, there were 85 respondents who gave reasons as to the issues they face not being able access the provision. The most common reason was the lack of availability of Welsh medium provision (45%), followed by distance (22%) and insufficient hours of care (14%).

Thoughts about childcare – The highest level of agreement to the statements was that childcare is too expensive (223 respondents) and that the quality of childcare is high (207). 185 respondents strongly agreed that they were satisfied with their childcare in term time and 179 respondents strongly agreed that childcare caters for their children's needs.

Work and study impact – There were 443 responses to the issues surrounding childcare that have affected them or their partner, the highest response was that childcare caused problems at work (47%). There were 17% of respondents that stated that childcare issues affected their continuation of work and 16% responded that childcare issues stopped them from working or getting a job.

Future childcare plans – 47% of respondents stated that they will need more childcare in the future. Of these, 18% of respondents think that they will need a private day nursery, followed by 17% needing a before school club and 17% needing an after school club. 23% think that the childcare they will need will stay the same as it is now.

Help towards childcare costs – 72% of respondents use childcare vouchers or tax free childcare to help them towards the cost of childcare, 23% still access the childcare element of the working tax credit or universal credit. The remainder of respondents access either a childcare grant for students, employer contribution for childcare or foster carer support.

Covid-19 impact – 9 respondents stated that they had childcare issues during the pandemic but that these had now been resolved. 2 respondents have commended that they will continue to use less childcare because they were concerned about covid-19 infections and disruptions.

Parental views on the childcare offered - There were an additional 185 comments made about childcare at the end of the survey with the most common one (14%) being that there is a general lack of childcare availability across Monmouthshire. Other comments were that there is a lack of early starts available (9%), a lack of after school care (8%) and a lack of reasonably priced or free childcare (8%).

Summary of Key Strengths and Weaknesses

Strengths:

- Most eligible respondents have access to childcare funding through Flying Start provision, early education or the Childcare Offer.
- Many respondents are able to receive some type of help towards the cost of childcare.
- Most respondents are able to access the childcare provision they need in the area of their choosing.
- Most respondents are generally satisfied with the childcare they use both during term time and school holidays.
- Most respondents consider the childcare they access to be of a high quality.
- Many respondents have reliable childcare arrangements.
- Many respondents understand where to access information about childcare.

Weaknesses:

- Most respondents consider childcare to be too expensive.
- Many respondents have had problems at work or in training due to childcare issues.
- Some respondents consider there to be a lack of childcare availability and long waiting lists.
- Some respondents require longer and more flexible childcare arrangements that are currently not available.
- Some respondents with children who have an additional need are unable to find suitable childcare

Cross Border Provision

Monmouthshire County Council has cross border arrangements in place for Foundation Phase Nursery provision with all six neighbouring authorities, four in Wales and two in England; therefore, families are able to access their entitlement to free part time early education (FPN) in any of these local authorities.

The number of Monmouthshire children that we are aware of that accessed their Foundation Phase Nursery provision outside of the Local Authority during the autumn term 2021 was as follows:

Local Authority	Number of Monmouthshire Children
Newport	None that we are aware of
Torfaen	3
Blaenau-Gwent	None that we are aware of
Powys	None that we are aware of
Gloucestershire	13
Hereford	12
TOTAL	28

The breakdown of children from outside the Local Authority that accessed their Foundation Phase Nursery provision within Monmouthshire during the autumn term 2021 was as follows:

Local Authority	Number Attending Non-Maintained Setting	Number Attending LA Nursery	TOTAL
Newport	3	11	14
Torfaen	0	0	0
Blaenau-Gwent	1	2	3
Powys	1	4	5
Gloucestershire	0	2	2
Hereford	1	0	1
TOTAL	6	19	25

Of the 127 parental survey respondents that were accessing Foundation Phase Nursery provision, 9 respondents (7%) indicated that they were accessing this in an authority other than Monmouthshire.

We consulted with Family Information Service colleagues in nearby local authorities as part of this process to enquire in relation to any contact that they have had with Monmouthshire residents accessing childcare within their local authority or making enquiries. They all responded that they don't record whether an enquiry comes from another local authority, so they were unable to provide any useful data.

Based on the various sources of information and feedback we have received, it appears that the vast majority of Monmouthshire residents are able to access suitable childcare or Foundation Phase Nursery provision within the Local Authority. Those that want to access provision in a different local authority other than their own are able to do so. The reasons for this tends to be that it is the nearest setting to where they live, it is near to where they work so it is more convenient or it is nearer to family or friends that are providing informal wrap around childcare. The majority of those accessing Foundation Phase Nursery provision outside of Monmouthshire are attending a setting in Gloucestershire or Herefordshire. This may be due, in part, to the fact that they can access 15 hours free in England, whereas we only fund 10 hours in a non-maintained setting and 12.5 hours in an LA maintained school nursery.

Workforce Development

Information on workforce development obtained through the SASS questionnaire can be summarised as follows:

- According to the SASS data, there are currently 461 staff working within childcare settings in Monmouthshire - 51 childminders and their assistants, 303 staff in full day care settings, 55 in sessional care settings and 52 in out of school care.
- Only 11.7% of the childcare workforce in Monmouthshire have no formal childcare qualification but one of these (0.2%) is currently working towards a qualification; there may be more than this, as this wasn't specifically asked in the SASS.
- A further 13% of staff have stated they have a qualification relating to childcare or play but they haven't specified what qualification they have.
- According to the SASS data, the childcare type with the highest number and percentage of unqualified staff is full day care (15.2% of full day care workforce).
- 74 staff (16.1%) in childcare settings in Monmouthshire have a level 5 qualification and almost three quarters of these are working in full day care; a further practitioner is working towards a level 5 qualification.
- 46.6% of the childcare workforce have a level 3 qualification and 11.7% have a Level 2 qualification.
- 45.1% of childminders have a CYPOP 5, 15.7% have a level 2 qualification, 45.1% have a level 3 qualification and 7.8% have a level 5 qualification.
- 64% of staff working in full day care are qualified at level 3 or higher and a further 9.2% have a level 2 qualification.
- The majority of sessional care workers (45.5%) have a level 3 qualification, 30.9% have a level 2 qualification and 21.8% have a level 5 qualification.
- In registered out of school settings, 5.8% of staff have a level 5 qualification, 69.8 % have a level 3 qualification and 1.9% have a level 2 qualification. The percentages would be lower if all unregistered settings were included, as the lack of suitably qualified staff is often a barrier to registration.
- There has been a high turnover of childcare staff in the last year with 115 practitioners leaving their employment. There are also 31 childcare staff currently on zero hour contracts.

Monmouthshire Early Years organise a training programme each year to ensure that there are sufficient courses available across Monmouthshire that can be accessed by the childcare workforce. Courses offered during the summer term 2021 included Behaviour Management, Safeguarding, Food Hygiene, Paediatric First Aid, Manual Handling, ALN, Outdoor Play and Incontinence Support. Due to the Covid pandemic, the majority of training courses since March 2020 have been held online or through a blend of online and face to face learning. We have previously funded the Transition to Playworks qualification for childcare practitioners working in play settings, to ensure settings were able to meet CIW regulations and we would be happy to do so again if there was a need for it.

Childcare settings in Monmouthshire are reporting significant difficulties in recruiting and retaining qualified staff; this message has been echoed by the umbrella organisations.

Covid-19 and Sustainability

The Covid-19 pandemic has had a significant impact on childcare settings in Monmouthshire. The SASS asked a number of questions in relation to this and the responses are summarised in the table below.

Childcare Type	Percentage of Settings with a Positive Case	Percentage of Settings that Closed Temporarily Due to Covid-19	Percentage of Settings Satisfied with Supply of PPE	Percentage of Settings Reporting an Impact on Training or Staff Ratios
Childminders	5%	66%	91%	20%
Full Day Care	42%	84%	94%	52%
Sessional Care	25%	67%	83%	17%
Out of School Care	40%	100%	100%	60%

Well under half of all childcare providers reported a positive case in their setting when they completed their SASS return in the summer term 2021. We are aware, however, that there were more cases in the autumn term 2021 and the beginning of the spring term 2022, so the actual number is significantly higher than this. Overall, 79% of providers closed temporarily due to Covid-19, but this doesn't include the childminders that have permanently closed during the pandemic, many of these as a direct result of Covid-19. The majority of full day care and out of school care providers reported that Covid-19 has had an impact on training or staffing ratios. The childcare type that appears to have been most affected by the Covid-19 pandemic is out of school care.

During the academic year 2020-2021, take up of childcare places was lower across all childcare types, although full day care settings were least affected. This was largely due to the fact that more parents and carers were working from home and didn't necessarily need childcare. There was also anxiety around infection rates, so some families chose to make alternative arrangements that they felt were less risky. Again, the childcare type most affected by this was out of school care. Take up of childcare places has increased during the academic year 2021-22 but after school clubs are still seeing a reduced demand for places, which could cause sustainability issues for some providers in the future.

The Covid-19 pandemic has had a financial impact on childcare providers; however, the sustainability grants and other funding streams that have been available to settings has significantly reduced this impact and, at present, we don't have any childcare providers in Monmouthshire that are reporting that they are facing financial difficulties. During the financial year 2020-2021, a total of £183,792 was awarded in sustainability grants and this was shared between 39 settings; this can be broken down as 5 childminders, 18 full day care settings, 6 sessional care settings and 10 out of school providers. To date, in the financial year 2021-2022, a total of £94,184 has been awarded in sustainability grants to 22 settings; this can be broken down as 4 childminders, 9 full day care settings, 3 sessional care settings and 6 out of school providers.

Gap Analysis & Areas for Improvement

On the whole, the quality of childcare provision in Monmouthshire is very good and there is sufficient provision to meet the needs of most families; however, there are some gaps in provision that have been identified and need to be addressed.

Childcare Types and Location

The total number of childcare providers in Monmouthshire has fluctuated over the last six years, as illustrated in the table below:

Childcare Type	Number of Childcare Providers by Year					
	2017	2018	2019	2020	2021	2022
Childminders	46	54	64	60	52	44
Full Day Care	23	24	25	27	30	31
Sessional Care	18	19	20	17	13	12
Out of School Care	18	20	20	22	20	25
Open Access Play	8	8	8	8	8	9
Creches	1	0	0	0	0	0
Nannies	0	0	0	0	2	2
Total	114	125	137	134	125	123

Although there are more settings than there were when we last completed the full CSA in 2017, the total number of childcare providers has decreased every year since 2019. It is thought that this is largely a result of the Covid-19 pandemic and it is hoped this picture will improve as we start to move out of the pandemic.

Despite this, there appears to be sufficient childcare places in all areas of Monmouthshire to meet the current demand. There is a good range of services offered by these providers and they are generally flexible enough to meet the needs of families.

The geographical distribution of childcare provision in Monmouthshire is good and is relative to the population and characteristics of each area. The highest number of childcare settings are situated in Abergavenny and Caldicot, then Chepstow and Monmouth, with Usk & Raglan having the fewest number of settings and childcare places.

Based on the data provided by childcare settings through their SASS return, then comparing this with the demand for childcare as evidenced through parental surveys and consultation responses from stakeholders, there appears to be sufficient provision of childminders, full day care, sessional care and after school care overall but there are small pockets where provision is tight.

Childminders is the one childcare type where we have seen a significant reduction in providers and places available over the last few years; the number of childminders has reduced by 31% from 64 in March 2019 to 44 at present. During our consultation with stakeholders, the PaCE Delivery Officer specifically raised this as a concern and reported that this has made it difficult for them to place children to enable parents or carers to access work or training opportunities.

Full day care is growing in Monmouthshire and places are spread throughout Monmouthshire, with providers in each of the five areas. The SASS data suggests that there are a significant number of vacancies, but this seems to be contradicted by the number of children on waiting lists, many of whom are at the same settings that are reporting vacancies. Our conversations with full day care providers suggest that demand for places has increased in the last few years, particularly for younger children below the age of 3; this is particularly noticeable in day nurseries. The rollout of free childcare for 2 year olds is likely to increase this demand, so there may be a need for more childcare places in full day care settings in the future.

The number of sessional care providers has reduced by 33% in the last 5 years but this is mainly due to the fact that many providers have changed their registration to full day care in order to meet the needs and demands of working parents, with families requesting longer hours since the introduction of the Childcare Offer. We have lost two sessional care settings in rural areas, who were forced to close due to consistently low demand. Sessional care is not available in Usk & Raglan but there are full day care settings and childminders in this area providing sessional care, so it is not a significant gap and has not been raised as a concern by stakeholders or through the parental survey. Again, the rollout of free childcare for 2 year olds may increase the demand for sessional care and there may be a need to develop additional provision or expand the existing provision.

There are free breakfast clubs at more than 90% of primary schools, so there is very little demand for before school care and there is only one primary school in Caldicot that doesn't have some form of before school care on site. The majority of after school clubs are now registered with CIW, so parents can access financial support to help towards the cost of their childcare. Although there is more after school provision in Abergavenny than any other area of Monmouthshire, demand appears to be higher and we have recently been contacted by parents in this area who have been unable to find after school care to meet their needs. There is a limited supply of holiday clubs and they are not available in all areas of Monmouthshire; however, many childminders and full day care settings are also providing holiday care and this has not been raised as a concern through the parental survey.

There is no registered open access play provision in Monmouthshire and the unregistered play provision is only available during school holidays; there is no play provision in the Usk & Raglan area.

The one creche that was registered with CIW when the SASS was completed has since deregistered and is no longer open. We are not aware of any unregistered creches operating in Monmouthshire.

There are only two nannies in Monmouthshire that are registered through the voluntary approval scheme and we have no information relating to any nannies that are operating within the authority, although we know that there are parents using a nanny for childcare.

Areas for Improvement:

- *Support existing childminders to stem the flow of de-registrations and recruit new childminders in all areas of Monmouthshire.*
- *Continue to monitor take up of places in full day care and sessional care settings and extend existing provision or develop additional provision, to cater for the rollout of free childcare for all 2 year olds.*
- *Develop or expand after school care in the Abergavenny area.*
- *Increase the number of holiday clubs and the range of childcare available during school holidays.*
- *Open access play is required during term time, as well as school holidays, and this provision must be accessible to families living in Usk & Raglan or more rural areas.*
- *More information is needed in relation to nannies operating in Monmouthshire.*

Age Range

There are only 55 children aged under 1 accessing childcare in Monmouthshire and 89% of these are attending a full day care setting. 80% of the 322 children age 1 year who are accessing childcare are also doing so at a full day care setting.

The majority of places in sessional care are taken up by 2 year olds; nevertheless, this only accounts for 20% of all 2 year olds that are accessing childcare, whereas 67% are accessing childcare at a full day care setting.

According to the SASS data, there are 1,120 childcare places accessed by children aged 3 – 4 years, although some of these may be the same children accessing multiple settings. Population data for 2020 suggests that there are 1,795 children aged 3 – 4 years, so it appears that approximately 62% of this age group are currently accessing childcare.

The majority of children aged 5 – 11 years that are accessing childcare are doing so at an out of school club (77% for 5-7 years olds and 88% for 8 – 11 year olds).

Play and care provision is only available for children aged 5 – 11 years.

There are very few children aged under 5 accessing holiday clubs; nevertheless, most childminders and more than 40% of full day care settings offer holiday care and there are places available in all areas of Monmouthshire for this age group.

Childminders are able to accommodate the largest age range of children, from 0 – 14 years. According to the SASS data, there are no childminders that can accommodate children aged 15 – 17 years; however, there is currently no demand for places for this age group. There is only one childminder that states they can accommodate children aged 12 – 14 years but, again, there is very little demand for this age group.

There are no significant areas for improvement in relation to age range.

Opening Hours

Most childminders and full day care settings offer a range of session lengths in order to meet the individual needs of families during the typical working day.

The majority of childminders and full day care providers operate between the hours of 8.30am and 5.30pm and there are providers in each area of Monmouthshire that operate from 8am and up until 6pm.

There are 17 childminders and 9 full day care settings that open before 8am and one of these offers childcare as early as 6am. There is one childminder in Caldicot that is open until 10pm but there is no childcare available after 10pm or at weekends and only one childminder in Abergavenny that says they would be willing to consider overnight care.

11 of the 14 after school clubs are open until 6pm; one is only open until 5pm as they are not registered so have to run under two hours but this doesn't necessarily meet the needs of most working families.

Only 8% of respondents to the parental survey stated that the reason they didn't access childcare was because the childcare available isn't flexible enough to meet their needs. 14% of respondents felt that childcare could be improved if there were earlier mornings and later evenings available and 12% stated that more flexible childcare would be an improvement.

Area for Improvement:

- *More provision is required during atypical hours such as before 8am, after 6pm, overnight and at weekends.*

Welsh Medium Childcare Provision

There is a significant shortage of Welsh medium childcare provision in Monmouthshire. There is only one cylch meithrin in Abergavenny offering full day care, two cylch meithrin in Caldicot and Monmouth offering sessional care and one bilingual childminder setting in Abergavenny. There used to be an after school club attached to the Welsh medium school in Abergavenny but this closed during the pandemic and hadn't reopened at the time the SASS was completed. There is no out of school care or open access play provision operating through the medium of Welsh.

All full day care and sessional care providers that are not Welsh medium settings describe themselves as English with some bilingual elements. Nevertheless, the majority of childminders (64%) and out of school providers (68%), and all play provision is described as being English only.

Of the 85 respondents who gave reasons as to the issues they face not being able to access Welsh medium childcare, 45% stated that there was a lack of availability of Welsh medium provision, 22% stated it was the distance and 14% said there were insufficient hours of childcare.

Areas for Improvement:

- *Encourage existing Welsh medium providers to extend their hours and to consider providing childcare during school holidays.*
- *Develop Welsh medium childcare provision of all childcare types to ensure there is provision in all areas of Monmouthshire.*
- *Encourage all childcare settings to provide at least some bilingual elements.*
- *Increase the number of Welsh medium Flying Start places.*

Childcare Provision for Different Language Categories

According to the population data in December 2020, 96.5% of the Monmouthshire population are White British, Irish or other and only 3.5% are Black, Asian or other ethnic minority; hence, it would be difficult to develop sustainable childcare provision in different languages and it is not necessary to meet the current demands of families in the local authority.

One childminder states that they use French at their setting and two full day care settings use Spanish but it is likely that this to provide learning opportunities for the children rather than meeting an individual language need of a child in their setting.

There are no significant areas for improvement in relation to different languages, other than English or Welsh.

Affordability of Childcare

Affordability is highlighted by parents and stakeholders as a barrier to childcare.

50% of respondents to the parental survey agreed with the statement that childcare is too expensive and the most popular reason given for not accessing childcare was that it is too expensive, this was mentioned by 17% of respondents. 15% of respondents felt that childcare could be improved if it was more affordable.

Of those respondents that indicated they are receiving help towards the cost of childcare, 72% are using childcare voucher schemes and tax free childcare, whilst 23% still access the childcare element of working tax credit or universal credit.

Almost all childcare provision in Monmouthshire, apart from two after school clubs, are registered with CIW so parents and carers are able to access funding towards the cost of their childcare.

86% of childminders, 97% of full day care providers and 50% of sessional care settings are registered for the Childcare Offer. Take up of Childcare Offer funding is very good in Monmouthshire.

Areas for Improvement:

- *Encourage and support existing out of school clubs and any new childcare settings that are developed to register with CIW.*
- *Support childcare settings to move over to the new digital system for the Childcare Offer.*
- *Continue to promote the various schemes and financial support that is available to parents and carers to help with the cost of childcare.*

Childcare Sufficiency Assessment – Action Plan

The Action Plan has been developed to address gaps highlighted in this Childcare Sufficiency Assessment and to reduce barriers that are preventing families from accessing childcare in Monmouthshire

Target	Why is it Required?	How will it be Achieved?	How will it be Monitored?	Timescale
Register 10 new childminders across Monmouthshire and support existing providers to at least maintain the current level of provision.	<p>There is always a high turnover of childminders due to the transient nature of the job, but this was even more of an issue during the pandemic and the total number of childminders has reduced significantly.</p> <p>Childminders are best placed to provide childcare during atypical hours.</p>	<p>Work with Pacey on a recruitment campaign and promote this widely.</p> <p>Provide childminder briefing sessions and ongoing support through the registration process.</p> <p>Continue to offer financial support for CYPOP5 training and start-up grants.</p>	<p>Number of newly registered childminders and de-registered childminders will be monitored through CIW monthly reports.</p> <p>Monitor take up of CYPOP training and number of childminder start-up grants awarded on a termly basis.</p>	March 2025
Develop 3 full day care or sessional care providers or extend existing provision to offer more places for 2 year olds.	<p>Places for children under 5 years of age are tight in some areas of Monmouthshire and, although there are vacant sessions, it is not always possible to offer a full time place.</p> <p>The rollout of free childcare for all 2 year olds is likely to exacerbate this situation.</p>	<p>Monitor take up of places in full day care and sessional care settings through take up of Flying Start, FPN and Childcare Offer, as well as regular communication with providers.</p> <p>Offer advice and support along with financial incentives to develop new provision or increase places.</p>	<p>Number of settings will be monitored through CIW monthly reports and take up of places will be monitored termly.</p> <p>Development grants will be monitored through CSG quarterly reports.</p>	September 2025

<p>Develop an after school club in the Abergavenny area or increase the number of after school places offered at an existing setting.</p>	<p>Feedback received from parents is that there is a shortage of after school places in some parts of Abergavenny, particularly those that operate until at least 5.30pm to meet the needs of working parents.</p>	<p>Childcare Development Officer will work closely with Clybiau Plant Cymru to develop additional after school provision.</p> <p>Development grants will be provided.</p>	<p>Number of settings will be monitored through CIW monthly reports and take up of places will be monitored termly.</p> <p>Development grants will be monitored through CSG quarterly reports.</p>	<p>March 2023</p>
<p>Develop an additional 2 holiday clubs in different areas of Monmouthshire.</p>	<p>There is a need to increase the range of childcare available during school holidays to meet the needs of working parents.</p>	<p>Childcare Development Officer will work closely with existing providers to expand their provision.</p> <p>Offer financial incentives such as development and sustainability grants to cover start up costs and a proportion of running costs.</p>	<p>This will be included as a target for the Childcare & Play Grant and monitored through quarterly progress reports.</p>	<p>July 2024</p>
<p>Develop open access play provision in Usk & Raglan and rural areas.</p>	<p>Open access play is currently only available in the four main towns and there is nothing available during term time.</p>	<p>Work closely with the Play Monitoring Group to extend the provision of open access play across the authority.</p>	<p>This will be reviewed and monitored as part of the Play Sufficiency Assessment.</p>	<p>March 2025</p>
<p>Increase the opening hours of at least 1 existing childcare provider in each of the 5 areas to include atypical hours such as before 8am, after 6pm, overnight and at weekends.</p>	<p>There is a lack of childcare available to meet the needs of parents who work atypical hours such as shift workers and those that work at weekends.</p>	<p>Offer financial incentives to encourage existing childcare providers to extend their opening hours and to provide childcare during atypical hours.</p>	<p>FIS will send update forms to childcare providers annually and the childcare supply will be updated accordingly and compared with the previous year.</p>	<p>March 2027</p>

<p>Establish a cylch meithrin in Chepstow and another in Usk & Raglan so that each of the five areas of Monmouthshire has Welsh medium pre-school provision.</p>	<p>There is currently no Welsh medium pre-school provision in Chepstow or Usk & Raglan.</p> <p>Lack of Welsh medium provision and distance from existing provision has been raised by parents as a reason for not accessing Welsh medium childcare.</p>	<p>Monmouthshire Early Years will work closely with Mudiad Meithrin to develop additional Welsh medium pre-school provision.</p> <p>Offer financial incentives such as development and sustainability grants to cover start up costs and a proportion of running costs.</p>	<p>The number of Welsh medium childcare places is included in the Welsh Education Strategic Plan (WESP) and this is reviewed termly.</p>	<p>March 2027</p>
<p>Encourage existing Welsh medium providers to extend their hours and to consider providing childcare during school holidays.</p>	<p>There is not sufficient Welsh medium childcare provision, in particular full day care and childcare during school holidays, to meet the needs of working parents.</p>	<p>Monmouthshire Early Years will work closely with Mudiad Meithrin and the existing providers to expand the provision of Welsh medium childcare provision.</p> <p>Development grants will be provided.</p>	<p>The number of Welsh medium childcare places is included in the Welsh Education Strategic Plan (WESP) and this is reviewed termly.</p>	<p>March 2027</p>
<p>Open after school provision in the 2 Welsh medium primary schools.</p>	<p>There is currently no Welsh medium out of school care available in Monmouthshire.</p>	<p>Childcare Development Officer will work with Clybiau Plant Cymru and members of the Welsh Education Forum to develop after school provision.</p> <p>Offer financial incentives such as development and sustainability grants to cover start up costs and a proportion of running costs.</p>	<p>Number of childcare settings by type is monitored termly through the Service Business Plan and as part of the CSG progress report.</p>	<p>September 2024</p>

<p>Provide Welsh training and activities to enable at least 15 providers to change from English only to English with some bilingual elements.</p>	<p>There are a number of providers that describe themselves as English only and don't offer any bilingual elements.</p> <p>We are required to actively promote speaking Welsh.</p>	<p>Identify a suitable Welsh course, cover the cost of the training and promote with childcare providers.</p> <p>Produce a bank of Welsh activities for all ages to share with providers.</p>	<p>Attendance lists will be kept and follow up will be carried out to assess the impact this has had on settings.</p> <p>Annual SASS data will be monitored if it is available to the Local Authority.</p>	<p>March 2027</p>
<p>Encourage and support existing out of school clubs and any new childcare settings that are developed to register with CIW.</p>	<p>Parents and carers are unable to access funding to support with the cost of childcare if settings are not registered with CIW.</p> <p>In unregistered settings, it is difficult to ensure childcare is of a sufficient standard.</p>	<p>Childcare Development Officer to support existing clubs and new settings to take them through the CIW registration process.</p> <p>Training to be funded if this is the barrier preventing settings from registering.</p>	<p>Number of registered settings to be monitored through CIW monthly reports.</p> <p>Take up of training to be monitored through CSG quarterly progress reports.</p> <p>Staff qualifications to be monitored annually.</p>	<p>March 2025</p>
<p>Support childcare settings to move over to the new digital system for the Childcare Offer.</p>	<p>Take up of the Childcare Offer is very good in Monmouthshire and the majority of providers are registered to offer places through the Childcare Offer.</p> <p>The current system will be replaced with a digital system and providers will need to sign up from September 2022 to continue to offer funded places.</p>	<p>The move to the digital system will be widely promoted with settings and parents through social media and emails.</p> <p>Childcare Engagement Officer and Family Information Officer will run sessions to take providers through this process and offer advice by telephone or email.</p>	<p>Number of providers signed up to the digital Childcare Offer system will be monitored weekly from September onwards, moving to monthly once the system goes live.</p> <p>Providers who haven't signed up will be contacted and encouraged to do so.</p>	<p>December 2022</p>

<p>Continue to promote the Family Information Service and advertise the availability of financial support to assist with the cost of childcare.</p>	<p>According to the parental survey and consultation with stakeholders, affordability is the main barrier to accessing childcare in Monmouthshire</p> <p>There are many schemes available to support with the cost of childcare.</p>	<p>The Family Information Service will create a section on the MCC website and use social media to promote the availability of these schemes.</p>	<p>The Family Information Officer produces monthly reports including details of promotional activities. Users of the FIS website complete evaluation forms.</p> <p>Take up of Flying Start, FPN, Childcare Offer and Assisted Places are monitored termly.</p>	<p>Ongoing</p>
<p>Collate information on nannies in Monmouthshire and add this to the Dewis website.</p>	<p>There are only two nannies in Monmouthshire that are registered through the voluntary approval scheme and we have no information on non-registered nannies that are operating in Monmouthshire.</p>	<p>Social media campaign will take place to encourage nannies to contact us and agree to add their details on the Dewis website.</p> <p>Contact nanny organisations and ask them to promote this.</p>	<p>Number of nannies (both registered and non-registered) will be added to the termly report of the Service Business Plan and the CSA Progress Report.</p>	<p>September 2023</p>

Annex 1 – Childminder Supply Data

Summary of Provision (Registered and Unregistered Provision)

Childcare Type	Language of Provision					TOTAL
	Welsh	Welsh & English	English & some bilingual elements	English	Other	
Total Childminders (Registered)	-	1	14	28	1	44
Total Childminders (Unregistered)	-	-	-	-	-	-
TOTAL	-	1	14	28	1	44

Services Provided	Language of Provision					TOTAL
	Welsh	Welsh & English	English & some bilingual elements	English	Other	
Full Day Care	-	1	13	28	1	43
Morning Session	-	1	13	28	1	43
Afternoon Session	-	1	14	28	1	44
Before School	-	1	13	26	1	41
After School	-	1	14	28	1	44
Wrap Around	-	1	10	22	1	34
Holiday Provision	-	1	12	27	1	41

Childcare Types and Services - Geographical Distribution

Childcare Type and Services	Area of Provision					Total
	Abergavenny	Caldicot	Chepstow	Monmouth	Usk	
Total Childminders	13	13	9	7	2	44
Full Day Care	12	13	9	7	2	43
Morning Session	12	13	9	7	2	43
Afternoon Session	13	13	9	7	2	44

Before School	11	13	9	7	1	41
After School	13	13	9	7	2	44
Wrap Around	9	10	7	6	2	34
Holiday Provision	12	10	8	7	2	39

Childcare Places – Capacity and Attendance – Term Time

Services	Number of Places by Area					
	Abergavenny	Caldicot	Chepstow	Monmouth	Usk	TOTAL
Maximum Capacity	87	101	77	58	16	339
Full Day Care	81	101	77	58	16	333
Morning Session	81	101	77	58	16	333
Afternoon Session	87	101	77	58	16	339
Before School	81	101	77	58	10	327
After School	87	101	77	58	16	339
Wrap Around	54	89	65	52	16	276

Take Up	Number of Places by Area					
	Abergavenny	Caldicot	Chepstow	Monmouth	Usk	TOTAL
Attending Full Time	14	9	3	19	3	48
Attending Part Time	67	79	90	41	14	291
Attending on an Ad Hoc Basis	19	10	1	2	0	32
Total	100	98	94	62	17	371

Childcare Places – Capacity – Holidays

	Number of Places by Area					
	Abergavenny	Caldicot	Chepstow	Monmouth	Usk & Raglan	TOTAL
Maximum Capacity during School Holidays	75	95	71	52	16	309

Childcare Places – Vacancies – Geographical Distribution

Services	Number of Vacancies by Area					
	Abergavenny	Caldicot	Chepstow	Monmouth	Usk & Raglan	TOTAL
Childminder Vacancies	51	51	65	22	-	189
Before School	18	15	10	8	-	51
After School	5	8	12	12	-	37
Full Day Care	14	10	13	2	-	39
Morning Session	7	10	13	-	-	30
Afternoon Session	7	8	17	-	-	32

Childcare Places – Waiting List (Term Time) – Geographical Distribution

Services	Number on Waiting Lists by Area					
	Abergavenny	Caldicot	Chepstow	Monmouth	Usk & Raglan	TOTAL
Before School	3	-	-	-	-	3
After School	-	-	-	-	-	-
Full Day Care	-	3	13	3	4	23
Morning Session	-	2	-	-	-	2
Afternoon Session	-	-	2	-	-	2
Total	3	5	15	3	4	30

Childcare Places – Waiting Lists (School Holidays) – Geographical Distribution

Services	Number on Waiting Lists by Area					
	Abergavenny	Caldicot	Chepstow	Monmouth	Usk & Raglan	TOTAL
Summer Holiday	4	-	-	2	-	6
October Half Term	3	-	-	-	-	3
Christmas Break	3	-	-	-	-	3
February Half Term	-	-	-	-	-	-
Easter Holidays	3	-	-	-	-	3
May Half Term	3	-	-	-	-	3

Age Range Accommodated and Geographical Distribution

Age Ranges	Number of Childminders by Area					
	Abergavenny	Caldicot	Chepstow	Monmouth	Usk & Raglan	TOTAL
Under 1 year	1	3	-	0	1	5
1 year	6	9	7	5	2	29
2 years	7	9	7	5	2	30
3 years	5	9	8	5	2	29
4 years	7	7	8	6	2	30
5-7 years	9	8	4	5	0	26
8-11 years	6	6	2	5	0	19
12-14 years	-	-	-	1	0	1

Geographical Distribution of Users by Age Range

Age Ranges	Take Up of Places by Area					
	Abergavenny	Caldicot	Chepstow	Monmouth	Usk & Raglan	TOTAL
Under 1 year	2	3	-	-	1	6
1 year	8	15	25	7	9	64
2 years	17	15	27	11	4	74
3 years	11	14	21	11	3	60
4 years	18	13	12	12	-	55
5-7 years	20	30	6	11	-	67
8-11 years	15	8	3	10	-	36
12-14 years	-	-	-	1	-	1
TOTAL	91	98	94	63	17	363

Range of Opening Hours

Length of Sessions		Number of Childminders by Area					
Start	Finish	Abergavenny	Caldicot	Chepstow	Monmouth	Usk & Raglan	TOTAL
06:00	18:00	1					1
07:00	17:00		1				1
07:00	18:00	1	1				2
07:00	18:15		1				1
07:15	17:30				1		1
07:30	17:30	1	1				2
07:30	17:45		1				1
07:30	18:00		1		2		3
07:30	18:30	1		2			3
07:30	22:00		1				1
07:45	17:45	1					1
08:00	16:00		1				1
08:00	17:00	3	3				6
08:00	17:15			1			1
08:00	17:30	1		3	3	1	8
08:00	18:00	2	2	3	1	1	9
08:30	18:00	1					1
15:30	18:00	1					1

Childcare Operating Outside of Normal Working Hours

Provision of Care	Number of Childminders by Area					
	Abergavenny	Caldicot	Chepstow	Monmouth	Usk & Raglan	TOTAL
Childcare before 8am	4	7	2	3	-	16
Childcare after 6pm	1	1	2	-	-	4
Overnight Care	1	-	-	-	-	1

Range of Childcare Costs per Hour

Range of Costs per Service – Hourly Charge	Number of Childminders by Area					
	Abergavenny	Caldicot	Chepstow	Monmouth	Usk & Raglan	TOTAL
£4.00	-	-	1	-		1
£4.50	1	8	2	3		14
£5.00	9	4	2	2	2	19
£5.15	1	-	-	-		1
£5.50	2	1	-	2		5
£6.00			2	-		2
£6.50	-	-	2			2

Additional Costs to the Service User for Food

Additional Charges	Number of Childminders by Area					
	Abergavenny	Caldicot	Chepstow	Monmouth	Usk & Raglan	TOTAL
Does not provide food	4	7	-	1	-	12
Charges an additional fee for Food and Snacks	5	3	1	2	1	12
Provides Food – does not charge extra	4	3	8	4	1	20

Sibling Discounts and Geographical Distribution

Sibling Discounts	Number of Childminders by Area					
	Abergavenny	Caldicot	Chepstow	Monmouth	Usk & Raglan	TOTAL
Discount for Siblings Available	3	3	3	1	-	10

Number of Children with Additional Learning Needs or Disability Cared for by Childminders – Geographical Distribution

Number of Children with Additional Learning Needs or Disability					
Abergavenny	Caldicot	Chepstow	Monmouth	Usk & Raglan	TOTAL
2	-	4	2	-	8

There were no childminded children recorded as being funded due to an Additional Learning Need or Disability

Funding and Geographical Distribution

Funding	Number of Childminders by Area					
	Abergavenny	Caldicot	Chepstow	Monmouth	Usk & Raglan	TOTAL
Provide Flying Start places	1	1	-	1	-	3
Registered for the Childcare Offer	10	11	9	7	1	38
Currently receiving funding from the Childcare Offer	7	9	8	6	1	31
Registered for Tax Free Childcare / Childcare Vouchers	9	9	8	7	1	34
Approved for Early Years Part Time Education	-	-	-	-	-	-

Covid-19 Impact and Geographical Distribution

Covid-19 Impact	Number of Childminders by Area					
	Abergavenny	Caldicot	Chepstow	Monmouth	Usk & Raglan	TOTAL
Temporarily closed	7	8	9	5	0	29
Positive case(s) on premises	1	1	0	0	0	2
Sufficient PPE equipment	10	12	9	7	2	40
Impacted staff ratios	0	0	0	1	0	1
Training impacted	3	4	0	2	0	9

Annex 2 – Full Day Care Supply Data

Summary of Provision (Registered and Unregistered Provision)

Childcare Type	Language of Provision					
	Welsh	Welsh & English	English & some bilingual elements	English	Other	TOTAL
Total Full Day Care (Registered)	1	-	28	-	2	31
Total Full Day Care (Unregistered)	-	-	-	-	-	-
TOTAL	1	-	28	-	2	31

Services Provided	Language of Provision					
	Welsh	Welsh & English	English & some bilingual elements	English	Other	TOTAL
Full Day Nursery	-	-	15	-	2	17
Morning Session (am)	1	-	28	-	2	31
Afternoon Session (pm)	1	-	26	-	2	29
Before School	-	-	18	-	2	20
After School	-	-	14	-	2	16
Wrap Around	1	-	11	-	-	12
Lunch	1	-	26	-	2	29
Term Time Only	1	-	12	-	-	13
Holiday Provision	-	-	15	-	2	17

Childcare Types and Services - Geographical Distribution

Childcare Type and Services	Area of Provision					
	Abergavenny	Caldicot	Chepstow	Monmouth	Usk & Raglan	Total
Total Full Day Care	8	9	4	6	4	31
Full Day Nursery	5	6	3	2	1	17
Morning Session (am)	8	9	4	6	4	31
Afternoon Session (pm)	8	8	4	5	4	29

Before School	6	7	4	2	1	20
After School	5	5	3	2	1	16
Wrap Around	4	5	1	1	1	12
Lunch	8	8	4	5	4	29
Term Time Only	3	4	1	2	3	13
Holiday Provision	5	5	3	3	1	17

Childcare Places – Capacity and Attendance

Services	Number of Places by Area					
	Abergavenny	Caldicot	Chepstow	Monmouth	Usk & Raglan	TOTAL
Maximum Capacity	299	281	213	189	225	1,207
Full Day Nursery	233	216	195	94	150	888
Morning Session (am)	299	281	213	189	225	1,207
Afternoon Session (pm)	299	262	213	165	225	1,164
Before School	261	236	213	94	150	954
After School	233	197	195	94	150	869
Wrap Around	168	160	18	44	150	540
Lunch	299	262	213	165	225	1,164
Term Time Only	66	84	18	71	75	314
Holiday Provision	233	197	195	118	150	893

Take Up	Number of Places by Area					
	Abergavenny	Caldicot	Chepstow	Monmouth	Usk & Raglan	TOTAL
Attending Full Time	49	61	37	45	13	205
Attending Part Time	346	339	224	193	178	1,280
Attending on an Ad Hoc Basis	122	4	2	7	0	135
Total	517	404	263	245	191	1,620

Childcare Places – Vacancies – Geographical Distribution

Services	Number of Vacancies by Area					
	Abergavenny	Caldicot	Chepstow	Monmouth	Usk & Raglan	TOTAL
Full Day Care Vacancies	272	482	391	49	1,452	2,646
Full Day Nursery	46	89	174	23	459	791
Morning Session	31	99	217	12	459	818
Afternoon Session	45	146	-	9	459	659
Before School	7	97	-	-	67	171
After School	102	20	-	-	-	122
Lunch	-	25	-	5	8	38
Early Years Placement	41	6	-	-	-	47

Childcare Places – Waiting List (Term Time) – Geographical Distribution

Services	Number on Waiting Lists by Area					
	Abergavenny	Caldicot	Chepstow	Monmouth	Usk & Raglan	TOTAL
Full Day Care Vacancies	42	13	270	20	-	345
Full Day Nursery	23	8	4	5	-	40
Morning Session	9	4	3	5	-	21
Afternoon Session	4	1	263	5	-	273
Before School	-	-	-	-	-	-
After School	-	-	-	-	-	-
Lunch	-	-	-	-	-	-
Early Years Placement	6	-	-	5	-	11

Childcare Places – Waiting Lists (School Holidays) – Geographical Distribution

Services	Number on Waiting Lists by Area					
	Abergavenny	Caldicot	Chepstow	Monmouth	Usk & Raglan	TOTAL
Summer Holiday	-	-	-	-	-	-
October Half Term	5	-	-	-	-	5

Christmas Break	-	-	-	-	-	-
February Half Term	5	-	-	-	-	5
Easter Holidays	5	-	-	-	-	5
May Half Term	5	-	-	-	-	5

Age Range Accommodated and Geographical Distribution

Age Ranges	Number of Full Day Care Providers by Area					
	Abergavenny	Caldicot	Chepstow	Monmouth	Usk & Raglan	TOTAL
Under 1 year	4	3	3	2	1	13
1 year	5	4	3	2	1	15
2 years	8	8	4	6	4	30
3 years	8	9	4	6	4	31
4 years	8	8	4	6	4	30
5-7 years	3	1	0	1	1	6
8-11 years	1	1	0	0	1	3
12-14 years	0	0	0	0	0	0

Geographical Distribution of Users by Age Range

Age Ranges	Take Up of Places by Area					
	Abergavenny	Caldicot	Chepstow	Monmouth	Usk & Raglan	TOTAL
Under 1 year	19	10	5	10	5	49
1 year	96	45	66	30	21	258
2 years	124	104	55	61	41	385
3 years	102	151	76	70	49	448
4 years	125	86	61	73	63	408
5-7 years	31	4	0	1	9	45
8-11 years	20	4	0	0	3	27
12-14 years	0	0	0	0	0	0
TOTAL	517	404	263	245	191	1,620

Range of Opening Hours

Length of Sessions		Number of Full Day Care Providers by Area					
Start	Finish	Abergavenny	Caldicot	Chepstow	Monmouth	Usk & Raglan	TOTAL
07:00	18:00	3			1		4
07:30	18:00	1		2	1		4
07:30	18:30		1				1
08:00	15:00		1	1			2
08:00	15:15		1			1	2
08:00	16:00	1					1
08:00	17:30		3				3
08:00	18:00	1	1	1		1	4
08:30	15:00					1	1
09:00	12:30		1				1
09:00	15:00	1			1		2
09:00	15:15	1					1
09:00	15:30		1		2		3
09:15	13:15				1		1
09:15	15:15					1	1
TOTAL		8	9	4	7	4	31

Childcare Operating Outside of Normal Working Hours

Provision of Care	Number of Full Day Care Providers by Area					
	Abergavenny	Caldicot	Chepstow	Monmouth	Usk & Raglan	TOTAL
Childcare before 8am	4	1	2	2	0	9
Childcare after 6pm	0	1	0	0	0	1
Overnight Care	0	0	0	0	0	0

Range of Childcare Costs per Hour

Range of Costs per Service – Hourly Charge	Number of Full Day Care Providers by Area					
	Abergavenny	Caldicot	Chepstow	Monmouth	Usk & Raglan	TOTAL
£4.00	1					1
£4.20				1		1
£4.50	1	3	1	1	1	7
£5.00	3	3	2	1	1	10
£5.15					1	1
£5.50	1			1	1	3
£6.00		2		2		4
£6.50		1	1			2
£7.55	1					1
£8.00	1					1

Additional Costs to the Service User for Food (Number of Full Day Care Providers) and Geographical Distribution

Additional Charges	Number of Full Day Care Providers by Area					
	Abergavenny	Caldicot	Chepstow	Monmouth	Usk & Raglan	TOTAL
Does not provide food (child brings own)	0	0	0	2	1	3
Charges an additional fee for Food and Snacks	2	3	0	2	3	10
Provides Food – does not charge extra	6	6	4	2	0	18

Sibling Discounts and Geographical Distribution

Sibling Discounts	Number of Full Day Care Providers by Area					
	Abergavenny	Caldicot	Chepstow	Monmouth	Usk & Raglan	TOTAL
Discount for Siblings Available	4	2	2	2	0	10

Number of Children with Additional Learning Needs or Disability Cared for by Full Day Care Providers – Geographical Distribution

Number of Children with Additional Learning Needs or Disability					
Abergavenny	Caldicot	Chepstow	Monmouth	Usk & Raglan	TOTAL
10	16	5	7	8	46

Funding and Geographical Distribution

Funding	Number of Full Day Care Providers by Area					
	Abergavenny	Caldicot	Chepstow	Monmouth	Usk & Raglan	TOTAL
Provide Flying Start places	1	0	0	2	0	3
Registered for the Childcare Offer	8	9	4	5	4	30
Currently receiving funding from the Childcare Offer	8	9	4	5	4	30
Registered for Tax Free Childcare / Childcare Vouchers	8	9	4	6	4	31
Approved for Early Years Part Time Education	6	6	3	3	4	22

Covid-19 Impact and Geographical Distribution

Covid-19 Impact	Number of Full Day Care Providers by Area					
	Abergavenny	Caldicot	Chepstow	Monmouth	Usk & Raglan	TOTAL
Temporarily closed	6	8	2	6	4	26
Positive case(s) on premises	4	3	2	3	1	13
Sufficient PPE equipment	8	8	3	6	4	29
Impacted staff ratios	1	1	1	0	0	3
Training impacted	3	3	3	3	4	16

Annex 3 – Sessional Care Supply Data

Summary of Provision (Registered and Unregistered Provision)

Childcare Type	Language of Provision					
	Welsh	Welsh & English	English & some bilingual elements	English	Other	TOTAL
Total Sessional Care (Registered)	2	-	10	-	-	12
Total Sessional Care (Unregistered)	-	-	-	-	-	-
TOTAL	2	-	10	-	-	12

Services Provided	Language of Provision					
	Welsh	Welsh & English	English & some bilingual elements	English	Other	TOTAL
Morning Session (am)	-	-	10	-	-	10
Afternoon Session (pm)	2	-	2	-	-	4
Wrap Around		-	0	-	-	0
Lunch		-	0	-	-	0
Term Time Only	2	-	10	-	-	12
Holiday Provision	-	-	0	-	-	-

Childcare Types and Services - Geographical Distribution

Childcare Type and Services	Area of Provision					
	Abergavenny	Caldicot	Chepstow	Monmouth	Usk	Total
Total Sessional Care	3	3	4	2	-	12
Morning Session (am)	3	2	4	1	-	10
Afternoon Session (pm)	1	2	0	1	-	4
Wrap Around	-	-	-	-	-	-
Lunch	-	-	-	-	-	-
Term Time Only	3	3	4	2	-	12
Holiday Provision	-	-	-	-	-	-

Childcare Places – Capacity and Attendance

Services	Number of Places by Area					
	Abergavenny	Caldicot	Chepstow	Monmouth	Usk	TOTAL
Maximum Capacity	80	65	88	36	-	269
Morning Session (am)	80	46	88	20	-	234
Afternoon Session (pm)	38	45	0	16	-	99
Wrap Around	-	-	-	-	-	-
Lunch	-	-	-	-	-	-
Term Time Only	80	65	88	36	-	269
Holiday Provision	-	-	-	-	-	-

Take Up	Number of Places by Area					
	Abergavenny	Caldicot	Chepstow	Monmouth	Usk	TOTAL
Attending Full Time	0	23	71	16	-	110
Attending Part Time	111	29	52	20	-	212
Attending on an Ad Hoc Basis	0	0	0	0	-	0
Total	111	52	123	36	-	322

Childcare Places – Vacancies (Term Time) – Geographical Distribution

Services	Number of Vacancies by Area					
	Abergavenny	Caldicot	Chepstow	Monmouth	Usk & Raglan	TOTAL
Total Sessional Care Vacancies	157	18	95	-	-	270
Morning Session	23	8	95	-	-	126
Afternoon Session	-	-	-	-	-	-
Lunch	119	-	-	-	-	119
Early Years Placement	15	10	-	-	-	25

Childcare Places – Waiting List (Term Time) – Geographical Distribution

Services	Number on Waiting Lists by Area					
	Abergavenny	Caldicot	Chepstow	Monmouth	Usk & Raglan	TOTAL
Total Sessional Care	-	5	-	-	-	-
Morning Session	-	-	-	-	-	-
Afternoon Session	-	-	-	-	-	-
Lunch	-	5	-	-	-	5
Early Years Placement	-	-	-	-	-	-

Age Range Accommodated and Geographical Distribution

Age Ranges	Number of Sessional Care Providers by Area					
	Abergavenny	Caldicot	Chepstow	Monmouth	Usk & Raglan	TOTAL
Under 1 year	-	-	-	-	-	-
1 year	-	-	-	-	-	-
2 years	3	1	4	2	-	10
3 years	2	2	3	1	-	8
4 years	2	2	2	1	-	7
5-7 years	-	-	-	-	-	-
8-11 years	-	-	-	-	-	-
12-14 years	-	-	-	-	-	-

Geographical Distribution of Users by Age Range

Age Ranges	Take Up of Places by Area					
	Abergavenny	Caldicot	Chepstow	Monmouth	Usk & Raglan	TOTAL
Under 1 year	-	-	-	-	-	-
1 year	-	-	-	-	-	-
2 years	41	28	33	15	-	117

3 years	29	10	33	4	-	76
4 years	41	14	15	3	-	73
5-7 years	-	-	-	-	-	
8-11 years	-	-	-	-	-	
12-14 years	-	-	-	-	-	
TOTAL	111	52	81	22	-	266

Range of Opening Hours

Length of Sessions		Number of Sessional Care Providers by Area					
Start	Finish	Abergavenny	Caldicot	Chepstow	Monmouth	Usk & Raglan	TOTAL
08:45	15:15	1				-	1
09:00	11:30	1		1			2
09:00	15:00		1				1
09:05	11:50	1				-	1
09:15	11:45		1		1	-	2
09:15	13:00			1			1
09:30	12:00			1			1
09:30	12:30			1			1
11:45	15:00		1			-	1
12:30	15:00				1	-	1
TOTAL		3	3	4	2	-	12

Range of Childcare Costs per hour

Range of Costs per Service – Hourly Charge	Number of Sessional Care Providers by Area					
	Abergavenny	Caldicot	Chepstow	Monmouth	Usk & Raglan	TOTAL
Free	1	1	1	1	-	4
£2.65	-	-	-	1	-	1
£3.00	1	-	-	-	-	1

Range of Costs per Service – Hourly Charge	Number of Sessional Care Providers by Area					
	Abergavenny	Caldicot	Chepstow	Monmouth	Usk & Raglan	TOTAL
£3.25	-	-	1	-	-	1
£3.60	-	-	1	-	-	1
£4.00	1	1	1	-	-	3
£5.50	-	1	-	-	-	1

Additional Costs to the Service User for Food (Number of Sessional Care Providers) and Geographical Distribution

Additional Charges	Number of Sessional Care Providers by Area					
	Abergavenny	Caldicot	Chepstow	Monmouth	Usk & Raglan	TOTAL
Does not provide food / snacks	-	2	-	-	-	2
Provides Food/ Snacks	-	-	3	1	-	4
Charges extra for Food / Snacks	3	1	1	1	-	6

Sibling Discounts and Geographical Distribution

	Number of Sessional Care Providers by Area					
	Abergavenny	Caldicot	Chepstow	Monmouth	Usk & Raglan	TOTAL
Discount for Siblings Available	-	2	-	-	-	2

Number of Children with Additional Learning Needs or Disability Cared for by Sessional Care Providers and Geographical Distribution

Number of Children with Additional Learning Needs or Disability						
Abergavenny	Caldicot	Chepstow	Monmouth	Usk & Raglan	TOTAL	
4	2	0	0	-	6	

Funding and Geographical Distribution

Funding	Number of Sessional Care Providers					
	Abergavenny	Caldicot	Chepstow	Monmouth	Usk & Raglan	TOTAL
Provide Flying Start places	-			-	-	-
Flying Start Provision Only	1	1	1	1	-	4
Registered for the Childcare Offer	2	2	1	1	-	6
Currently receiving funding from the Childcare Offer	2	2	1	1	-	6
Registered for Tax Free Childcare / Childcare Vouchers	1	1	3	1	-	6
Approved for Early Years Part Time Education	2	-	2	-	-	4

Covid-19 Impact and Geographical Distribution

Covid-19 Impact	Number of Sessional Care Providers					
	Abergavenny	Caldicot	Chepstow	Monmouth	Usk & Raglan	TOTAL
Temporarily Closed	2	2	3	1	-	8
Had Positive case(s) had premises	1	1	0	1	-	3
Had sufficient PPE equipment	2	3	4	1	-	10
Impacted staff ratios	0	1	0	0	-	1
Training impacted	1	1	0	0	-	2

Annex 4 – Out of School Care Supply Data

Summary of Provision (Registered and Unregistered Provision)

Childcare Type	Language of Provision					
	Welsh	Welsh & English	English & some bilingual elements	English	Other	TOTAL
Total Out of School Care (Registered)	-	-	8	15	-	23
Total Out of School Care (Unregistered)	-	-	-	2	-	2
TOTAL	-	-	8	17	-	25

Services Provided	Language of Provision					
	Welsh	Welsh & English	English & some bilingual elements	English	Other	TOTAL
Before School Care	-	-	2	2	-	4
After School Care			3	11		14
Holiday Care			3	4		7

Childcare Types and Services - Geographical Distribution

Childcare Type and Services	Number of Out of School Care Providers by Area					
	Abergavenny	Caldicot	Chepstow	Monmouth	Usk	Total
Total Out of School Care	8	6	5	2	4	25
Before School Care	2	1	0	0	1	4
After School Care	3	3	4	2	2	14
Holiday Care	3	2	1	0	1	7

Childcare Places – Capacity and Attendance

Services	Number of Places by Area					
	Abergavenny	Caldicot	Chepstow	Monmouth	Usk	TOTAL
Maximum Capacity	281	224	316	80	112	1,013
Before School Care	85	28	-	-	28	141
After School Care	104	118	260	80	60	622
Holiday Care	92	78	56	-	24	250

Take Up	Number of Places by Area					
	Abergavenny	Caldicot	Chepstow	Monmouth	Usk	TOTAL
Attending Full Time	20	27	13	7	15	82
Attending Part Time	47	146	197	45	104	539
Attending on an Ad Hoc Basis	168	116	56	4	0	344
Total	235	289	266	56	119	965

Childcare Places – Vacancies (Term Time) – Geographical Distribution

Services	Number of Vacancies by Area					
	Abergavenny	Caldicot	Chepstow	Monmouth	Usk & Raglan	TOTAL
Before School	9	0	0	0	13	22
After School	2	46	47	12	10	117
Total	11	46	47	12	23	139

Childcare Places – Waiting Lists (Term Time) – Geographical Distribution

Services	Number on Waiting Lists by Area					
	Abergavenny	Caldicot	Chepstow	Monmouth	Usk & Raglan	TOTAL
Before School	0	0	0	0	0	0
After School	0	0	0	0	2	2

Holiday Provision Plans

Holiday Provision Plans	Date of Holiday					
	Summer	October HT	Christmas	February HT	Easter	May Half Term
Planning to Open?	8	5	3	5	6	4
Maximum Number of Days To Open	34	5	8	5	8	4
Numbers on Waiting List	0	0	0	0	0	0

Age Range Accommodated and Geographical Distribution

Age Ranges	Number of Out of School Care Providers by Area					
	Abergavenny	Caldicot	Chepstow	Monmouth	Usk & Raglan	TOTAL
Under 1 year	-	-	-	-	-	-
1 year	-	-	-	-	-	-
2 years	-	-	-	-	-	-
3 years	-	1	-	-	-	1
4 years	1	1	3	1	-	6
5-7 years	8	6	5	2	4	25
8-11 years	7	6	5	2	4	24
12-14 years	1	1	-	-	-	2

Geographical Distribution of Users by Age Range

Age Ranges	Take Up of Places by Area					
	Abergavenny	Caldicot	Chepstow	Monmouth	Usk & Raglan	TOTAL
Under 1 year	-	-	-	-	-	-
1 year	-	-	-	-	-	-
2 years	-	-	-	-	-	-
3 years	-	4	-	-	-	4
4 years	39	27	8	2	-	76

5-7 years	69	116	122	18	45	370
8-11 years	132	111	136	25	45	449
12-14 years	1	2	-	-	-	3
TOTAL	241	260	266	45	90	902

Range of Opening Hours

Length of Sessions		Number of Out of School Care Providers by Area					
Start	Finish	Abergavenny	Caldicot	Chepstow	Monmouth	Usk & Raglan	TOTAL
BEFORE SCHOOL CARE							
07:30	09:00	1					1
07:45	09:00					1	1
08:00	09:00	1	1				2
AFTER SCHOOL CARE							
15:00	18:00	1	2		2	1	6
15:15	17:30		1				1
15:15	18:00	1		1			2
15:30	17:25			1			1
15:30	18:00			2		1	3
15:45	17:00	1					1
HOLIDAY CARE							
07:00	18:00	1					1
07:30	18:00	1					1
08:00	17:30		1				1
08:00	18:00	1	1	1		1	4
TOTAL:		8	6	5	2	4	25

Range of Childcare Costs per Hour

Range of Costs per Service – Hourly Charge	Number of Out of School Care Providers by Area					
	Abergavenny	Caldicot	Chepstow	Monmouth	Usk & Raglan	TOTAL
£2.00			1			1
£2.75		2			2	4
£3.20			1			1
£3.30	3					3
£3.50					1	1
£4.00	1	1	2			4
£4.40		2				2
£4.50		1				1
£5.55				2	1	3
£7.00			1			1
£7.55	2					2
£8.00	2					2

Additional Costs for Food to the Service User (Number of Out of School Care Providers) and Geographical Distribution

Additional Charges	Number of Out of School Care Providers by Area					
	Abergavenny	Caldicot	Chepstow	Monmouth	Usk & Raglan	TOTAL
Does not provide food / snacks	-	2	1	-	-	3
Provides Food/ Snacks	8	1	4	2	4	19
Charges extra for Food / Snacks	-	3	-	-	-	3

Sibling Discounts and Geographical Distribution

	Number of Out of School Care Providers by Area					
	Abergavenny	Caldicot	Chepstow	Monmouth	Usk & Raglan	TOTAL
Discount for Siblings Available	2	0	1	2	2	7

Number of Children with Additional Learning Needs or Disability Cared for by Out of School Care Providers and Geographical Distribution

Number of Children with Additional Learning Needs or Disability					
Abergavenny	Caldicot	Chepstow	Monmouth	Usk & Raglan	TOTAL
1	16	2	0	7	26

Covid-19 Impact and Geographical Distribution

Covid-19 Impact	Number of Out of School Care Providers by Area					
	Abergavenny	Caldicot	Chepstow	Monmouth	Usk & Raglan	TOTAL
Temporarily Closed	8	6	5	2	4	25
Had Positive case(s) had premises	7	2	0	0	1	10
Had sufficient PPE equipment	8	6	5	2	4	25
Impacted staff ratios	0	3	0	0	0	3
Training impacted	5	2	2	2	4	15

Annex 5 – Play & Care Provision Supply Data

Summary of Provision (Registered and Unregistered Provision)

Childcare Type	Language of Provision					
	Welsh	Welsh & English	English & some bilingual elements	English	Other	TOTAL
Total Play and Care Provision (Registered)	-	-	-	-	-	-
Total Play and Care Provision (Unregistered)	-	-	-	9	-	9
TOTAL	-	-	-	9	-	9

Play and Care Types and Services - Geographical Distribution

Childcare Type and Services	Area of Provision					
	Abergavenny	Caldicot	Chepstow	Monmouth	Usk	Total
Total Open Access Provision	2	2	2	3	-	9
Monmouthshire Games	1	1	1	1	-	4
School Holiday Enrichment Programme	1	1	1	2	-	5

Play and Care Places – Capacity and Attendance

Services	Area of Provision					
	Abergavenny	Caldicot	Chepstow	Monmouth	Usk	TOTAL
Maximum Capacity	130	130	130	170	-	560
Monmouthshire Games	50	50	50	50	-	200
School Holiday Enrichment Programme	80	80	80	120	-	360

Take Up	Number of Children Supported	Total Attendances
Monmouthshire Games	899	4131
School Holiday Enrichment Programme	423	3620

Age Range of Play and Care Provision

All Play and Care Provision is available for children aged 5 – 11 years

Play and Care Provision – (School Holidays) – Geographical Distribution

Services	Number of Play and Care Providers by Area					
	Abergavenny	Caldicot	Chepstow	Monmouth	Usk & Raglan	TOTAL
Summer Holiday	2	2	2	3	-	9
October Half Term	1	1	1	1	-	4
Christmas Break	1	1	1	1	-	4
February Half Term	1	1	1	1	-	4
Easter Holidays	1	1	1	1	-	4
May Half Term	1	1	1	1	-	4

The Monmouthshire Games operates every school holidays. The School Holiday Enrichment Programme operated in the summer holidays only.

Range of Opening Hours

Length of Sessions		Number of Play and Care Providers by Area					
Start	Finish	Abergavenny	Caldicot	Chepstow	Monmouth	Usk & Raglan	TOTAL
8am	5pm	1	1	1	1	-	4
9:30am	2:30pm	1	1	1	2	-	5
TOTAL		2	2	2	3	-	9

Range of Costs per Hour

Range of Costs per Service – Daily Charge	Number of Play and Care Providers by Area					
	Abergavenny	Caldicot	Chepstow	Monmouth	Usk & Raglan	TOTAL
£0.00	1	1	1	2	-	5
£20.50	1	1	1	1	-	4

Additional Costs to the Service User for Food and Geographical Distribution

Additional Charges	Number of Play and Care Providers by Area					
	Abergavenny	Caldicot	Chepstow	Monmouth	Usk & Raglan	TOTAL
Does not provide food (child brings own)	1	1	1	1	-	4
Charges an additional fee for Food and Snacks	-	-	-	-	-	-
Provides Food – does not charge extra	1	1	1	2	-	5

Number of Children with Additional Learning Needs or Disability Cared for by Play and Care Providers

Children Attending	Number of Children Supported
Monmouthshire Games	50
Summer Holiday Enrichment Programme	42

Annex 6 – Parental Survey Results

TOTAL NUMBER OF MONMOUTHSHIRE RESPONDENTS TO THE PARENT SURVEY ON CHILDCARE - 443

This is the number that will be used to calculate percentages of respondents, where applicable, as not all respondents have replied to each question and for some questions, respondents may have given multiple responses. For some questions, which are not applicable to all respondents, the percentage of actual responses has been calculated instead, as this is more meaningful.

Households of Respondents

Status	Number of Responses	Percentage of Respondents
I share responsibility for my children with someone I live with	348	78.6%
I have sole responsibility for my children	69	15.6%
I share responsibility for my children with someone I don't live with	28	6.3%
I am a parent to be	11	2.5%
I am a foster parent	8	1.8%
I am a grandparent	8	1.8%
Other - I am a special guardian	2	0.5%

Number of Children in the Household

Number of Children in the Household	Number of Responses	Percentage of Respondents
0 – child on the way	47	10.6%
1	136	30.7%
2	181	40.9%
3	63	14.2%
4	9	2.0%
5	5	1.1%
6	1	0.2%
Didn't say	1	0.2%

Age of Respondents' Children

Age of Children	Number of Children	Percentage of Children	Percentage of Respondents
Under 2	107	14.5%	24.2%
Age 2	82	11.1%	18.5%
Age 3	94	12.8%	21.2%
Age 4	69	9.4%	15.6%
Age 5 to 8	208	28.3%	28.3%
Age 9 to 11	108	14.7%	47.0%
Age 12 to 17	68	9.2%	15.3%
Total	736	100%	N/A

Children Accessing Funded Early Education Place at a School or Non-Maintained Setting

Do you access Early Education Funding?	Number of Responses	Percentage of Responses
Yes, in the same local authority as I live	118	74.7%
No	15	9.5%
Will Start Soon	11	6.9%
Yes, in a different local authority to where I live	9	5.7%
Not Sure	5	3.2%
Total	158	100%

Reasons for Not Accessing a Funded Early Education Place

Reasons for not using Early Education Funding	Number of Responses	Percentage of Responses
Provider we use is not approved for funding	1	50%
Don't know what this is	1	50%
Total	2	100%

Children Accessing Flying Start Provision

Do you access Flying Start?	Number of Responses	Percentage of Responses
No	133	81.1%
Yes	16	9.8%
Not Sure	15	9.1%
Total	164	100%

Reasons for Not Accessing Flying Start Provision

Reasons for not accessing Flying Start	Number of Responses	Percentage of Responses
Not Eligible	12	27.3%
Not Available in my area	12	27.3%
Do not know what it is	11	25%
Need Longer Childcare	5	11.3%
Do not need the childcare	2	4.5%
Welsh Medium FS Provision unavailable	1	2.3%
Level of Care unsuitable	1	2.3%
Total	44	100%

Respondents' Accessing the Childcare Offer

Do you wish to access the Childcare Offer	Number of Responses	Percentage of Responses
Yes	78	95.1%
No	3	3.7%
Not Applicable	1	1.2%
Not Sure	0	0%
Total	82	100%

Reasons for Not Accessing the Childcare Offer

Reasons for not accessing the Childcare Offer	Number of Responses	Percentage
We do not need any childcare	1	50%
One parent doesn't work	1	50%
Total	2	100%

Respondents with Children who have Additional Learning Needs or a Disability

Additional Learning Needs or a Disability	Number of Responses
Child has a disability	41
Child has a special educational need/additional learning need	61

Use of Childcare During Term Time

Childcare	Number of Responses	Percentage of Respondents
Family and Friends (unpaid)	187	42.2%
Private Day Nursery	162	36.6%
Before School/Breakfast Club	107	24.2%
After School Club	91	20.5%
None during Term Time	66	14.9%
Childminder	43	9.7%
School Nursery	41	9.3%
Playgroup	30	6.8%
Cylch Meithrin	8	1.8%
Family and Friends (paid)	7	1.6%
Nanny	3	0.7%
Other - Babysitter (paid)	1	0.2%
Other - Carer for additional needs (paid)	1	0.2%

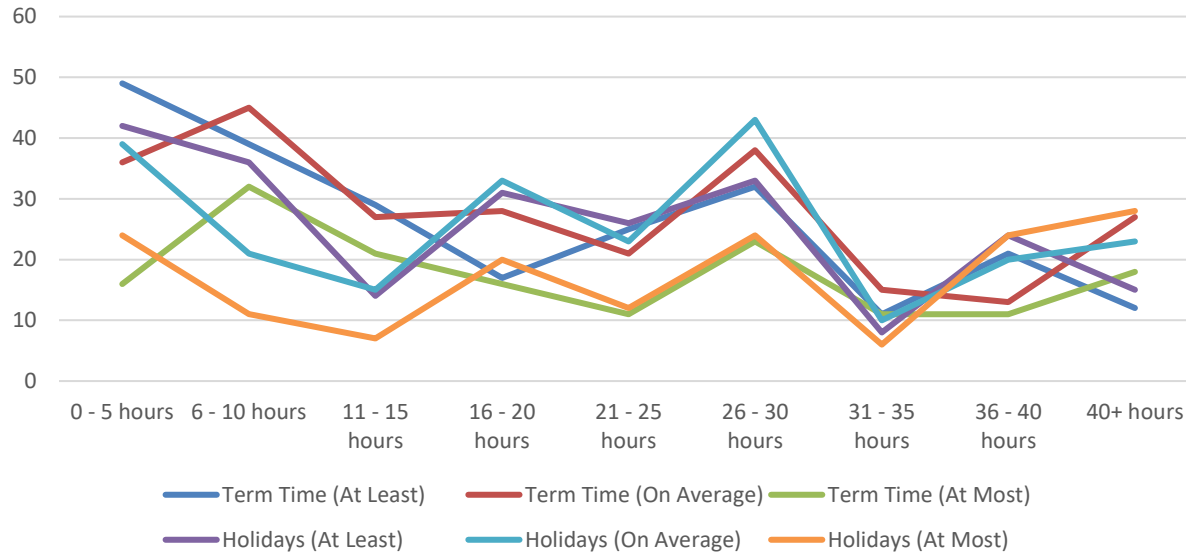
Use of Childcare During School Holidays

Childcare	Number of Responses	Percentage of Respondents
Family and Friends (unpaid)	203	45.8%
Private Day Nursery	135	30.5%
Holiday Care/Playscheme	102	23.0%
None during School Holidays	56	12.6%
Childminder	35	7.9%
Family and Friends (paid)	8	1.8%
Playgroup	6	1.4%
Pre-Prep Private School	1	0.2%
Nanny	1	0.2%
Au Pair	1	0.2%

Respondents Use of Childcare in Hours per Week

Number of Hours Using Childcare per Week	Number of Respondents					
	Term Time (At Least)	Term Time (On Average)	Term Time (At Most)	Holidays (At Least)	Holidays (On Average)	Holidays (At Most)
0 – 5 Hours	49	36	16	42	39	24
6 – 10 hours	39	45	32	36	21	11
11 – 15 hours	29	27	21	14	15	7
16 – 20 hours	17	28	16	31	33	20
21 – 25 hours	25	21	11	26	23	12
26 – 30 hours	32	38	23	33	43	24
31 – 35 hours	11	15	11	8	10	6
36 – 40 hours	21	13	11	24	20	24
40 hours+	12	27	18	15	23	28
Total	235	250	159	229	227	156

Total Number of Respondents and the number of hours used for Childcare



Average Childcare Costs per Week (not including government funded childcare)

Childcare Costs Per Week	Number of Responses	Percentage of Responses
£0	64	17.4%
1p - £10	15	4.1%
£10 - £49	71	19.4%
£50 - £99	75	20.4%
£100 - £199	97	26.4%
£200 - £299	26	7.1%
£300+	19	5.2%
Total	367	100%

Respondents’ Satisfaction with their Current Childcare Providers

Level of Satisfaction	Number of Responses	Percentage of Responses
Very Satisfied	207	56.3%
Quite Satisfied	120	32.6%
Quite Dissatisfied	14	3.8%
Very Dissatisfied	6	1.6%
Not Applicable	21	5.7%
Total	368	100%

Respondents’ View on Areas of Childcare to be Improved

Improvement Reason	Number of Responses	Percentage of Responses	Percentage of Respondents
More affordable	9	15.2%	2.0%
Extend opening hours – early mornings	8	13.6%	1.8%
Extend opening hours – evenings	8	13.6%	1.8%
More flexible sessions (ad hoc care)	7	11.9%	1.6%
Better quality provision	7	11.9%	1.6%
More hours available (setting is too busy/full)	6	10.2%	1.4%
Other - the childcare we need doesn’t exist	5	8.5%	1.1%
Childcare that is better at meeting my child’s additional learning needs	4	6.8%	0.9%
Different location	2	3.4%	0.5%
Extend opening hours – to cover weekend	2	3.4%	0.5%
Other – more support for parents from providers	1	1.7%	0.2%
Extend opening hours – overnight care	0	0%	0%
No Improvements needed	0	0%	0%
Total	59	100%	N/A

Reasons for Not Accessing Childcare

Reason for not Accessing Childcare	Number of Responses	Percentage of Responses	Percentage of Respondents
The cost of childcare is too expensive	50	16.83%	11.3%
I use informal childcare such as a family member or friend	48	16.16%	10.8%
I am a stay at home parent and have no need for childcare	25	8.42%	5.6%
The childcare available is not flexible enough for my needs	25	8.42%	5.6%
Childcare times are unsuitable	20	6.73%	4.5%
I choose not to access any childcare	18	6.06%	4.1%
I only use childcare on an ad hoc basis and it is impossible to plan	18	6.06%	4.1%
My children are old enough to look after themselves	15	5.05%	3.4%
There is no childcare with sufficient quality	14	4.71%	3.2%
There is no childcare available that is suitable for my child's age	14	4.71%	3.2%
There is no childcare where I need it to be	13	4.38%	2.9%
There is no childcare that can cater for my child's specific needs	13	4.38%	2.9%
Other – the childcare we need doesn't exist	8	2.70%	1.8%
My child is on a waiting list for a provider and we are waiting for a place to become available	7	2.36%	1.6%
There is a problem with transport	6	2.02%	1.4%
There is no suitable Welsh Language provision	3	1.01%	0.7%
No suitable provision in our language, which is neither Welsh nor English	0	0%	0%
Total	297	100%	N/A

Respondents Accessing Childcare through the Medium of Welsh

Accessing Welsh Medium Childcare	Number of Responses	Percentage of Responses	Percentage of Respondents
No	241	88.6%	54.4%
Unsure / Don't Know	17	6.3%	3.8%
Yes	14	5.1%	3.2%
Total	272	100%	N/A

Respondents who would Like to Access Childcare through the Medium of Welsh

Like to Access Welsh Childcare	Number of Responses	Percentage of Responses	Percentage of Respondents
No	160	63.5%	36.1%
Maybe	44	17.5%	9.9%
Unsure / Don't Know	26	10.3%	5.9%
Yes	22	8.7%	5.0%
Total	252	100%	N/A

Issues Faced Accessing Welsh Medium Childcare

Issue	Number of Responses	Percentage of Responses	Percentage of Respondents
Availability	38	44.7%	8.6%
Distance	19	22.4%	4.3%
Insufficient hours of care	12	14.1%	2.7%
Cost	9	10.6%	2.0%
Staff Language Capability	4	4.7%	0.9%
Quality of Care	3	3.5%	0.7%
Total	85	100%	N/A

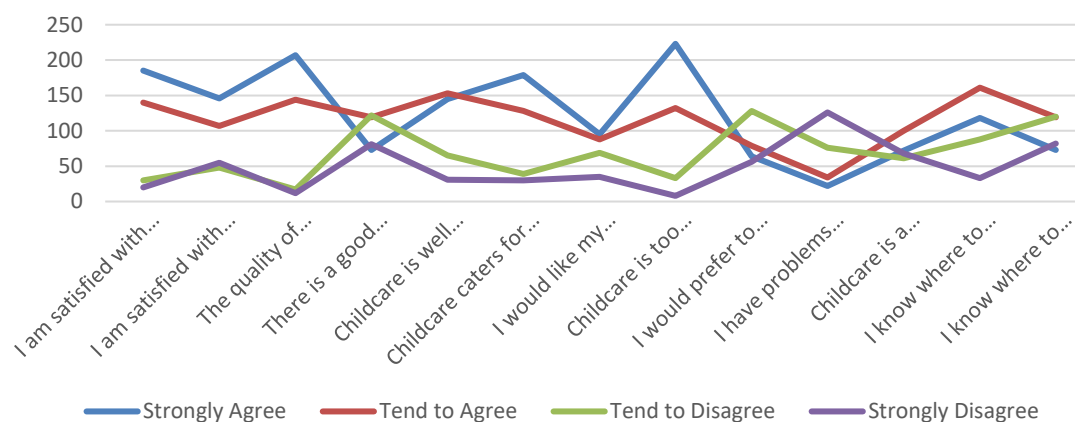
Welsh Language Ability

Welsh Ability	Number of Responses	Percentage of Respondents
No Welsh Knowledge/Skipped Question	350	79.0%
Understand Welsh	84	19.0%
Speak Welsh	51	11.5%
Read Welsh	56	12.6%
Write Welsh	42	9.5%

Respondents' Views on Childcare

Statement	Strongly Agree	Tend To Agree	Tend to Disagree	Strongly Disagree	N/A	Response Total
I am satisfied with my childcare in term time	185	140	30	20	51	426
I am satisfied with my childcare in school holidays	146	107	48	55	72	428
The quality of childcare is high	207	144	17	12	47	427
There is a good choice of childcare in my area	73	119	122	81	32	427
Childcare is well located	145	153	65	31	32	426
Childcare caters for my children's needs	179	128	39	30	49	425
I would like my child to attend more registered childcare	95	88	69	35	133	420
Childcare is too expensive	223	132	33	8	33	429
I would prefer to use family/friends for childcare	64	79	128	56	100	427
I have problems with arrangements that are unreliable	22	34	76	126	163	421
Childcare is a barrier to me accessing employment or training	72	100	61	68	122	423
I know where to find information about childcare	118	161	88	33	29	429
I know where to find out info on financial assistance for childcare	73	119	120	82	35	429

Respondents Views on Childcare



Issues Surrounding Childcare that have Affected Respondents

Issue	Number of Responses	Percentage of Respondents
Caused problems at work	210	47.4%
Prevented continuation of work	75	16.9%
Stopped you working/getting a job	71	16.0%
Stopped you from training	68	15.3%
Other – difficulty only during the pandemic	9	2.0%
Other – lack of flexibility	5	1.1%
Other – prevented career progression in work	3	0.7%
Other – health needs	2	0.5%

Respondents by Working Status

Working Status	Number of Respondents	Number of Partners	Response Total
Employed	350	300	650
Self Employed	39	58	97
Not working or looking for a job	26	6	32
In Education or Training	24	5	29
Unable to work	21	5	26
Looking for a job but not working yet	10	5	15

Respondents by Weekly Household Income

Gross Household Income Per Week	Number of Responses	Percentage of Respondents
Up to £100	5	1.2%
£100 - £149	1	0.2%
£150 - £249	6	1.4%
£250 - £349	25	6.1%

£350 - £499	21	5.1%
£500 - £580	28	6.7%
£581 - £750	67	16.1%
£750 - £999	79	19.1%
More than £1000	122	29.4%
Prefer not to say	61	14.7%
Total	415	100%

Respondents who Anticipate Using Less Childcare in the Future and their Reasons Why

Reason	Number	Percentage of Respondents
Child will be older	79	17.8%
Trying to have more time with family	5	1.1%
Expect to work/study less hours	3	0.7%
Expect to work / study from home more	3	0.7%
Concerns around covid-19 infections	1	0.2%
Concern about covid-19 disruption to services/closure	1	0.2%
Total	92	N/A

Respondents who Anticipate Using More Childcare in the Future

Anticipation	Number	Percentage of Respondents
More	205	46.3%
Stay the same	99	22.3%
Less	82	18.5%
Don't Know /Not Sure	46	10.4%
Total	432	N/A

Type of Childcare Respondents Anticipate Using in the Future

Reason	Number of Responses	Percentage of Respondents
Private Day Nursery	103	23.3%
Before School / Breakfast Club	99	22.3%
After School Club	99	22.3%
Holiday Club	74	16.7%
Family / Friends (not paid)	66	14.9%
School Nursery	41	9.3%
Childminder	29	6.5%
Playgroup	29	6.5%
Cylch Meithrin	15	2.63%
Family / Friends (paid)	8	3.4%
Pre-Prep (Private) School	3	0.7%
Drop Off Creche	2	0.5%
Nanny	2	0.5%
Other – specifically for ALN	1	0.2%
Au Pair	0	0%
Total	571	N/A

Help Received Towards the Cost of Childcare

Reason	Number of Responses	Percentage of Respondents
Childcare Vouchers / Tax free childcare	126	28.4%
Childcare element of the Working Tax/Universal Credit	41	9.3%
Childcare Grant for Students	4	0.9%
Employer contribution	2	0.5%
Other – Foster Carer Support	1	0.2%
Total	174	N/A

Respondents by Ethnic Group

Ethnic Group	Number of Responses	Percentage of Respondents
Welsh/English/Scottish/Northern Irish/British	403	91.0%
White and Asian	5	1.1%
Indian	4	0.9%
White and Black Caribbean	4	0.9%
Any other White Background	2	0.5%
Polish	2	0.5%
Arab	2	0.5%
Irish	2	0.5%
Gypsy or Irish Traveller	1	0.2%
American/British	1	0.2%
Austrian	1	0.2%
Czech British	1	0.2%
European	1	0.2%
Hungarian	1	0.2%
Zimbabwean	1	0.2%
White and Black African	1	0.2%
Any other Mixed/Multiple ethnic background	1	0.2%
Sri Lankan	1	0.2%
Didn't say	9	2.0%
Total	443	100%

Additional Comments (Summarised)

Childcare Issues	Number of Responses	Percentage of Respondents
Lack of Childcare Availability	26	5.9%
Lack of Early Starts	16	3.6%
Lack of After School Care	14	3.2%
Lack of reasonably priced/free childcare	14	3.2%
Lack of suitable childcare for ALN	13	2.9%
Lack of Wrap Around Care	11	2.5%
Lack of Holiday Care	8	1.8%
Lack of full time early years provision to support working parents	8	1.8%
Lack of Holiday Care that caters for working parents	6	1.4%
Lack of Late Finishes	6	1.4%
Lack of Care for under 3s	6	1.4%
Lack of longer childcare hours	6	1.4%
Lack of suitable childcare for twins or multiple births	5	1.1%
Lack of Welsh provision	5	1.1%
Lack of Good Quality Childcare	5	1.1%
Lack of Before School Care	4	0.9%
Lack of flexible fees when childcare isn't needed	4	0.9%
Lack of flexible childcare for working parents	4	0.9%
Lack of Holiday Provision for over 10s	4	0.9%
Lack of Childminders	4	0.9%
Lack of childcare funding support for those on benefits/studying	3	0.7%
Lack of suitable holiday care	3	0.7%
Lack of Holiday Provision for 4 year olds	3	0.7%
Lack of childcare funding support for under 3s	2	0.5%
Lack of Childminders suitable children 7+	2	0.5%
Lack of School Nurseries	1	0.2%
Lack of reasonably priced holiday care	1	0.2%
Lack of wrap around care for Welsh provision	1	0.2%

Annex 7 – Foundation Phase Nursery Provision

Summary of Foundation Phase Nursery Providers

Childcare Type	Language of Provision					TOTAL
	Welsh	Welsh & English	English & some bilingual elements	English	Other	
Full Day Care	-	-	22	-	-	22
Sessional Care	-	-	4	-	-	4
LA School Nursery	2	-	10	-	-	12
TOTAL	2	-	36	-	-	38

Number of Providers Funded to Provide Foundation Phase Nursery – Geographical Distribution

Childcare Type	Number of Providers by Area					
	Abergavenny	Caldicot	Chepstow	Monmouth	Usk & Raglan	Total
Full Day Care	6	6	3	3	4	22
Sessional Care	2	-	2	-	-	4
LA School Nursery	3	5	2	2	-	12
Total	11	11	7	5	4	38

Attendance Profile of Children Attending Foundation Phase Nursery Provision – Geographical Distribution (Summer Term 2021)

Childcare Type	Number of Children Attending by Area					
	Abergavenny	Caldicot	Chepstow	Monmouth	Usk & Raglan	Total
Full Day Care	155	140	90	69	91	492
Sessional Care	32	-	41	-	-	73
LA School Nursery	134	202	83	62	-	481
Total	321	342	214	131	91	1046

Attendance Profile of Children Attending Foundation Phase Nursery Provision by Language – Geographical Distribution (Summer Term 2021)

Language	Number of Providers by Area					
	Abergavenny	Caldicot	Chepstow	Monmouth	Usk & Raglan	Total
Welsh Provision	56	16	-	-	-	72
English with bilingual elements	265	273	214	131	91	974
Total	321	289	214	131	91	1046

Overall Take Up of Foundation Phase Nursery Places by School Term (2021)

Term	Number of Children
Spring 2021	820
Summer 2021	1046
Autumn 2021	703

Take Up of Foundation Phase Nursery Provision, as per Parental Survey

Area	Number of Respondents Claiming Entitlement
Abergavenny	31
Caldicot	42
Chepstow	20
Monmouth	18
Usk & Raglan	5
Total	116

Reasoning Given by Respondents for Not Claiming Entitlement

Reasons for Not Using Foundation Phase Nursery	Number of Responses	Percentage
Provider we use is not approved for funding	1	50%
Don't know what this is	1	50%

Annex 8 – Childcare Offer Provision

Summary of Providers Registered for the Childcare Offer

Childcare Type	Language of Provision					
	Welsh	Welsh & English	English & some bilingual elements	English	Other	TOTAL
Childminders	-	1	13	20	1	35
Full Day Care	1	-	28	-	-	29
Sessional Care	2	-	8	-	-	10
Outside of Monmouthshire	2	2	59	-	-	63
TOTAL	3	3	64	20	1	137

Number of Providers Registered for the Childcare Offer – Geographical Distribution

Childcare Type	Number of Providers by Area					
	Abergavenny	Caldicot	Chepstow	Monmouth	Usk & Raglan	Total
Childminder	10	8	7	8	2	35
Full Day Care	9	7	4	5	4	29
Sessional Care	2	2	2	3	1	10
Total	20	20	14	12	5	74

Attendance Profile of Monmouthshire Children Accessing the Childcare Offer (Autumn 2021)

Childcare Type	Number of Children by Area						
	Abergavenny	Caldicot	Chepstow	Monmouth	Usk & Raglan	Out of County	Total
Childminder	8	9	6	12	-	-	35
Full Day Care	76	83	67	35	45	39	345

Sessional Care	15	11	4	3	-	5	38
Total	99	103	77	50	45	44	418

Overall Take Up of the Childcare Offer, by School Term (2021)

Term	Number of Children
Spring 2021	553
Summer 2021	601
Autumn 2021	418

Respondents who would like to take up the Childcare Offer when their Child becomes Eligible, as per Parental Survey

Area	Number of Respondents
Abergavenny	21
Caldicot	25
Chepstow	13
Monmouth	13
Usk & Raglan	4
Total	76

Reasoning Given by Respondents for Not Claiming Childcare Offer Funding, as per Parental Survey

Reasons for Not Accessing the Childcare Offer	Number of Responses
We choose not to use childcare	2
Total	2

Annex 9 – Flying Start Provision

Number of Providers Available to Provide Flying Start Places - by Language

Childcare Type	Language of Provision					
	Welsh	Welsh & English	English & some bilingual elements	English	Other	TOTAL
Full Day Care	1	-	1	1	-	3
Childminder	-	-	1	2	-	3
Flying Start Only Provision	-	-	4	-	-	4
TOTAL	1	-	6	3	-	10

Number of Providers Offering Flying Start Places – Geographical Distribution

Childcare Type	Number of Providers by Area					
	Abergavenny	Caldicot	Chepstow	Monmouth	Usk & Raglan	Total
Full Day Care	1	-	-	2	-	3
Childminder	1	1	-	1	-	3
Flying Start Only Provision	1	1	1	1	-	4
Total	3	2	1	4	-	10

Number of Flying Start Places Available – Geographical Distribution

Childcare Type	Number of Places by Area					
	Abergavenny	Caldicot	Chepstow	Monmouth	Usk & Raglan	Total
Full Day Care	6	-	-	12	-	18
Childminder	2	2	-	2	-	6
Flying Start Only Provision	16	20	12	20	-	68
Total	24	22	12	34	-	92

Take Up of Flying Start Places, as per Parental Survey

Area	Number of Respondents Accessing Free Childcare	Number of Respondents Not Accessing Free Childcare
Abergavenny	7	30
Caldicot	3	48
Chepstow	2	22
Monmouth	4	21
Usk & Raglan	-	8
Postcode not completed	-	4
Total	16	133

Reasons Given by Respondents for Not Accessing Flying Start Childcare

Reasoning	Number of Respondents by Area						
	Abergavenny	Caldicot	Chepstow	Monmouth	Usk & Raglan	No Postcode	TOTAL
Do not live in a Flying Start area	8	5	3	4	3	-	23
Don't know about the entitlement	3	5	2	1	-	-	11
Chose a provider with longer hours	3	1	-	-	-	-	4
There is no suitable Welsh Medium provision available	-	-	1	-	-	-	1
Do not need the childcare	-	-	2	-	-	-	2
Total	14	11	8	5	3	-	41

Annex 10 – Workforce Development

Number of Individual Staff Working by Childcare Type and Area

Childcare Type	Number of Staff by Area					
	Abergavenny	Caldicot	Chepstow	Monmouth	Usk	Total
Childminders	9	10	20	7	5	51
Full Day Care	96	72	54	48	33	303
Out of School Care	6	17	18	4	7	52
Sessional Care	14	12	20	9	0	55
Total	125	111	112	68	45	461

Please note: Some Full Day Care staff also provide Out of School Care but they are not listed twice.

Staff Retention by Childcare Type

Childcare Type	Number of Staff		
	Working Less than 16 hours	Zero Hour Contract	Left the Service in the Last 12 months
Childminders	4	0	4
Full Day Care	22	21	43
Out of School Care	37	9	46
Sessional Care	21	1	22
Total	84	31	115

Staff Qualifications by Childcare Type

Qualification Name	No. with qualification	% of staff
Childminders Qualifications		
CCLD Level 2	7	13.7%
CCLD Level 3	23	45.1%
CCLD Level 5	4	7.8%
Working Towards CCLD Level 5	1	2.0%

Qualification relevant to childcare	19	37.3%
Level 2 Award in Playwork Practice	1	2.0%
CYPOP 5	23	45.1%
Qualification not listed	4	7.8%
Working towards qualification not listed	1	2.0%
Full Day Care Qualifications		
CCLD Level 2	23	7.6%
CCLD Level 3	139	45.9%
CCLD Level 5	55	18.2%
Qualification relevant to childcare	24	7.9%
Level 2 Award in Playwork Practice	5	1.7%
No formal qualification	46	15.2%
Out of School Care Qualifications		
CCLD Level 3	11	21.8%
CCLD Level 5	3	5.8%
Qualification relevant to childcare	4	7.7%
Level 2 Award in Playwork Practice	1	1.9%
Level 3 Award in Transition to Playwork from Early Years	8	15.4%
Level 3 Diploma in Playwork	15	28.8%
Level 3 Diploma Playwork (P3)	2	3.8%
Qualification related to play	3	5.8%
No formal qualification	1	1.9%
Sessional Care Qualifications		
CCLD Level 2	6	10.9%
CCLD Level 3	24	43.6%
CCLD Level 5	11	20%
Qualification relevant to childcare	3	5.5%
Level 2 Award in Playwork Practice	11	20%
Level 3 Award in Transition to Playwork from Early Years	1	1.8%
Level 5 Diploma in Playwork	1	1.8%
Qualification related to play	3	5.5%
No formal qualification	6	10.9%

Annex 11 – Covid-19 Impact on Childcare

Number of Childcare Providers that Closed at Some Point During the Pandemic

Childcare Type	Number of Providers by Area											
	Abergavenny		Caldicot		Chepstow		Monmouth		Usk		Total	
	Closed	Didn't Close	Closed	Didn't Close	Closed	Didn't Close	Closed	Didn't Close	Close	Didn't Close	Closed	Didn't Close
Childminders	7	4	7	4	8	-	4	2	-	1	26	11
Full Day Care	6	2	7	1	2	-	6	-	4	-	25	3
Out of School Care	1	-	2	-	3	-	2	-	1	1	9	1
Sessional Care	2	-	2	1	3	1	1	1	-	-	8	3
Total	16	6	18	6	16	1	13	3	5	2	68	18

Number of Closures Due to Covid-19

Childcare Type	Number of Closures by Area														
	Abergavenny		Caldicot				Chepstow		Monmouth			Usk		Total	
	Closed once	Closed Twice	Closed once	Closed twice	Closed 3 times	Closed 5 times	Closed once	Closed Twice	Closed once	Closed Twice	Closed 4 times	Closed once	Closed Twice	Closed once	Closed more than once
Childminders	6	2	7	-	-	-	6	2	-	4		-	-	19	8
Full Day Care	5	1	7	-	-	-	2	-	4	1	1	3	2	21	5
Out of School Care	1	3	-	-	2	-	-	3	-	2		-	1	1	11
Sessional Care	1	1	-	1	1	1	2	1	1	-				4	5
Total	13	7	14	1	3	1	10	6	5	7	1	3	3	45	29

Number of Providers who have had Positive Cases at their Setting

Childcare Type and Services	Area					Total
	Abergavenny	Caldicot	Chepstow	Monmouth	Usk	
Childminders	-	1	-	-	-	1
Full Day Care	4	4	1	3	1	13
Out of School Care	1	1	-	-	-	2
Sessional Care	1	1	-	1	-	3
Total	6	7	1	4	1	19

Number of Providers who did not have Sufficient PPE at their Setting

Childcare Type and Services	Area					Total
	Abergavenny	Caldicot	Chepstow	Monmouth	Usk	
Childminders	2	1	-	1	-	4
Full Day Care	-	-	-	-	-	0
Out of School Care	-	-	-	-	-	0
Sessional Care	-	-	-	1	-	1
Total	2	1	-	2	-	5

Number of Providers who had an Impact on Training due to Covid-19

Childcare Type and Services	Area					Total
	Abergavenny	Caldicot	Chepstow	Monmouth	Usk	
Childminders	4	4	3	5	0	16
Full Day Care	5	7	2	3	4	21
Out of School Care	1	1	2	2	2	8
Sessional Care	1	1	1	0	-	3
Total	11	13	8	10	6	48